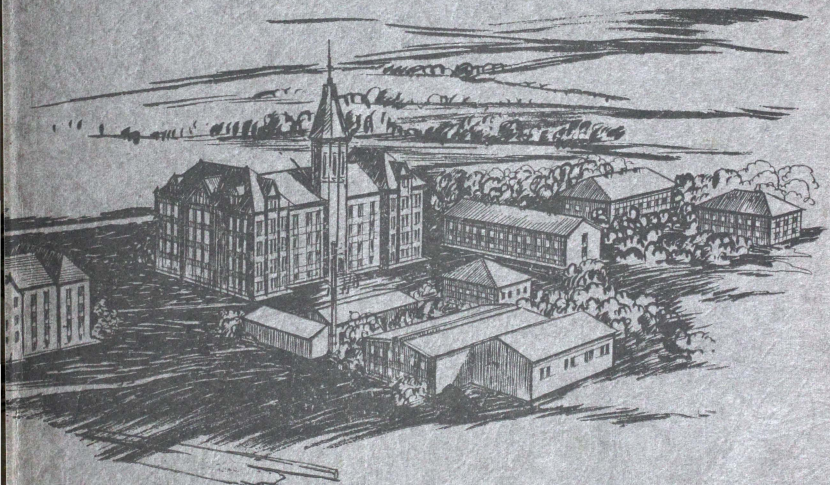
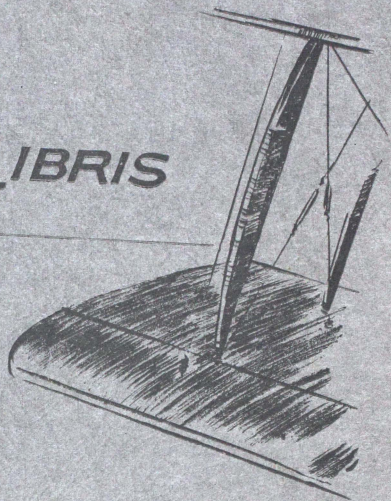


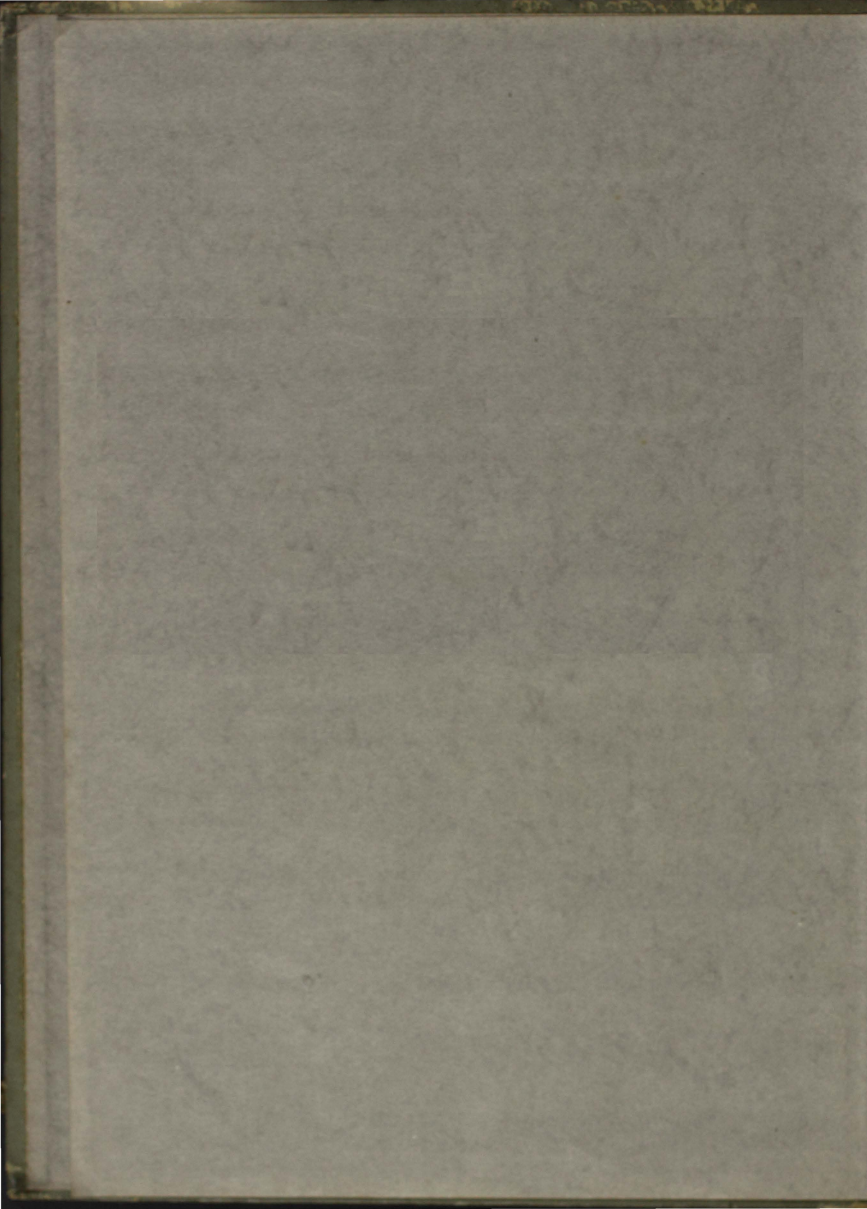
THE
T
O
W
E
R





EX LIBRIS





THE
1930
TOWER



Published by the Students of
St. Edward's University
AUSTIN, TEXAS



ORVILLE WRIGHT

INVENTOR OF THE FIRST SUCCESSFUL AIRPLANE

IRWIN J. FANETTE

Editor-in-Chief

RALPH J. WARNER

Business Manager



LIEUT. OAKLEY KELLY
Co-PILOT IN FIRST COAST TO COAST FLIGHT

Dedication

A tribute to the unswerving courage of men, present and past, who have devoted their lives that a new world might be developed. To those who have sacrificed that man might subject the air, this book is proudly dedicated.



COL. CHARLES A. LINDBERGH

FIRST NON-STOP TRANS-ATLANTIC FLYER

Foreword

Here have we tried to mirror, like a panoramic air view, a year of lasting friendships and pleasant recollections of school life at St. Edward's.

In our later flight through life may this book be a cherished reminiscence of friends and events of a year well spent.



COM. RICHARD E. BYRD
CONQUEROR OF NORTH AND SOUTH POLES

Contents

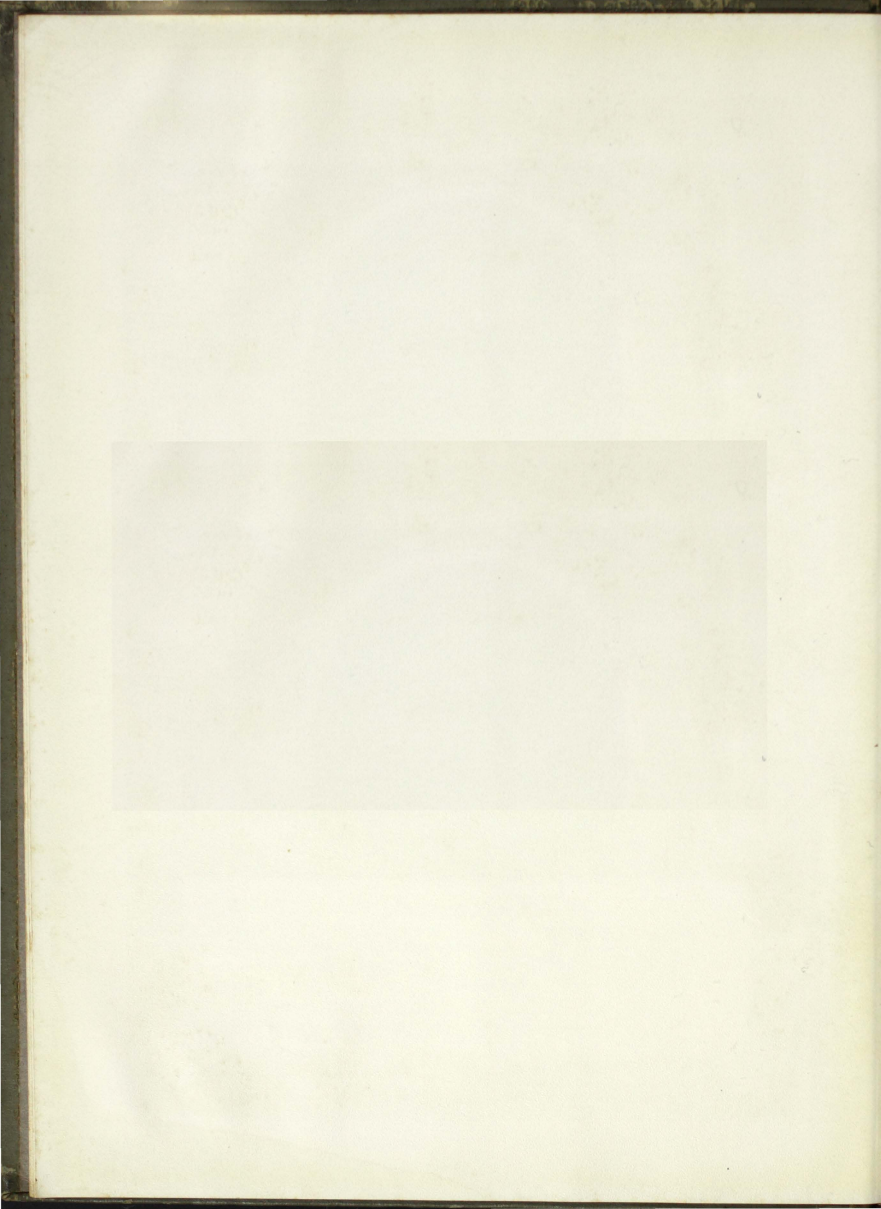
THE UNIVERSITY

CLASSES

ACTIVITIES

ATHLETICS

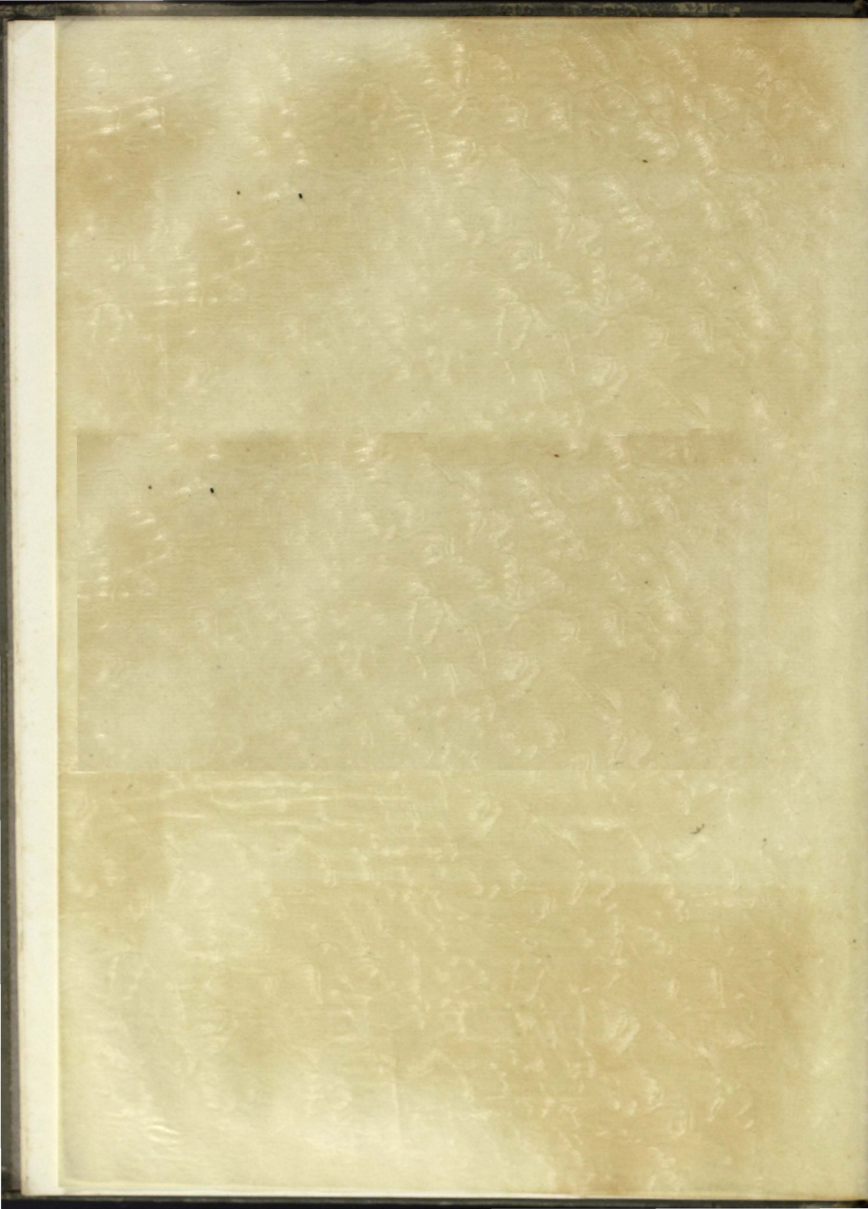
PREP SCHOOL





The Wright brothers' "Strangest Contraption" flies at Kitty Hawk, 1903

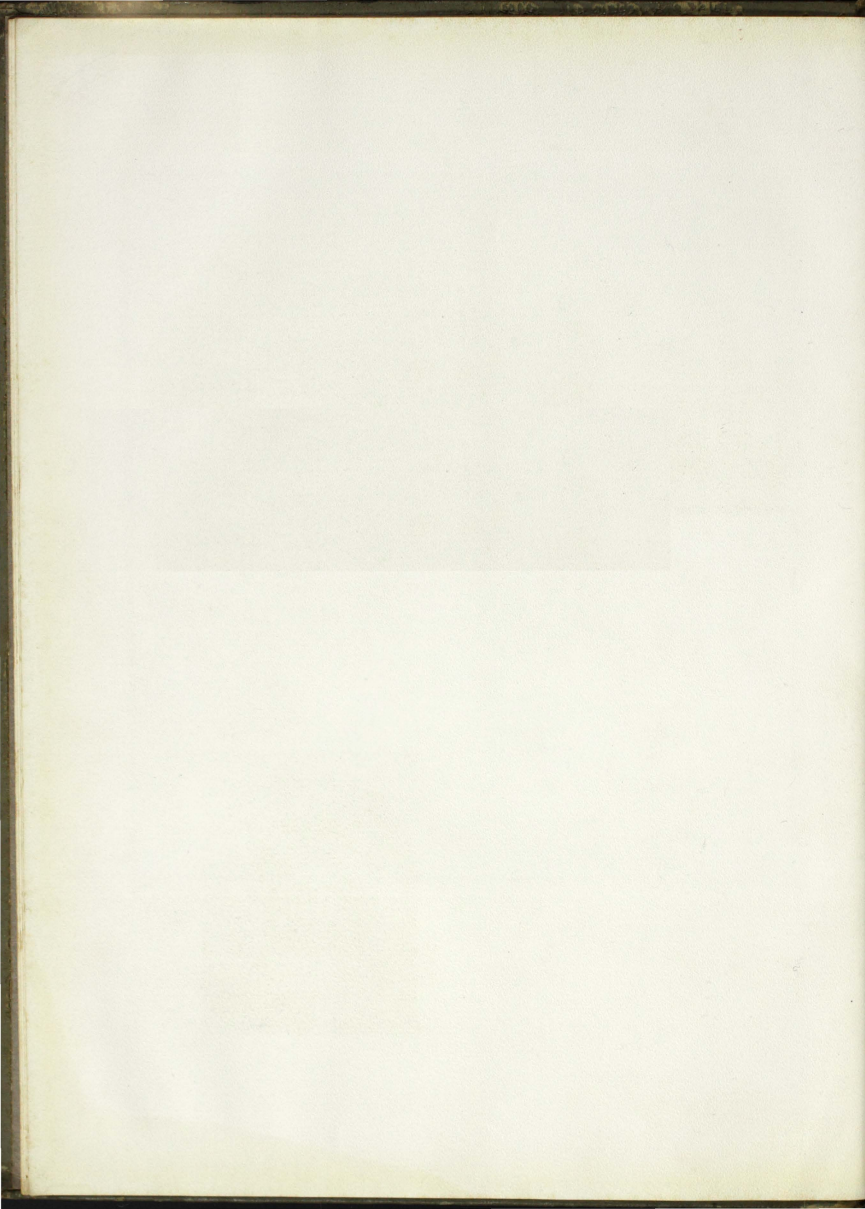
UNIVERSITY

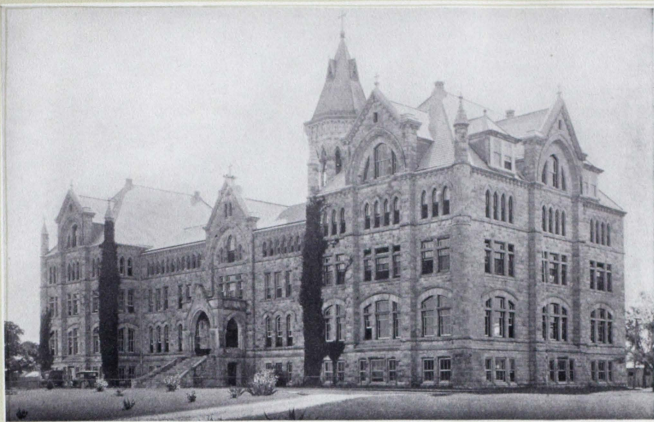




The Wright brothers' "Strange Contraption" rises at Kitty Hawk, 1903

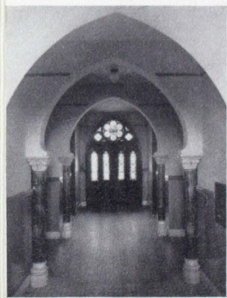
UNIVERSITY





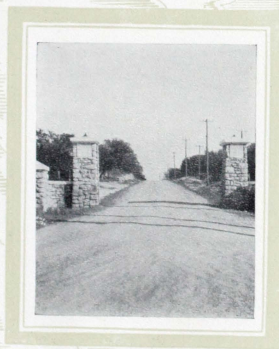
THE ADMINISTRATION BUILDING

GOthic ARCHES
In the hall of the main building





HOLY CROSS HALL

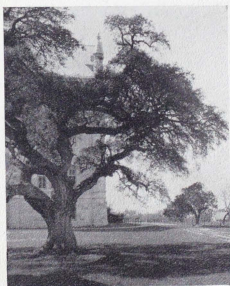


GATEWAY TO THE UNIVERSITY



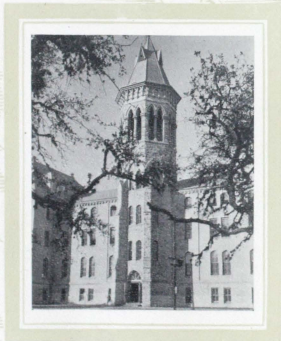
SENIOR COTTAGES

SILENT SENTINEL OF THE MAIN BUILDING

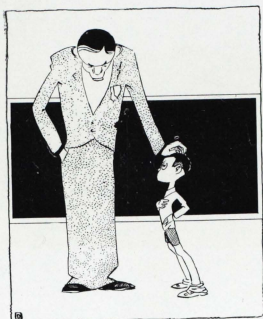




A VIEW OF THE UNIVERSITY FROM THE EAST



THE TOWER

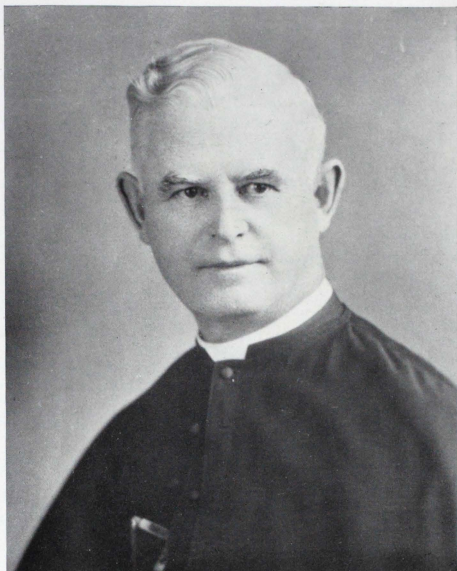


Administration



The Most Rev. Archbishop Peter J. Hurth, C.S.C., D.D.

Archbishop Hurth, President of St. Edward's College from 1886 to 1894, now makes his home at St. Edward's University. After serving eight years as president of St. Edward's he was appointed Bishop of Dacca, Bengal, India. In 1910 he was appointed Bishop of Nueva Segovia, Philippine Islands. In 1926 he resigned this See and was elevated to the dignity of Titular Archbishop of Bostra. Since that time he has made St. Edward's his permanent residence. On March 31 The Most Rev. Archbishop celebrated the fiftieth anniversary of his ordination in the priesthood.



To the Class of 1930:

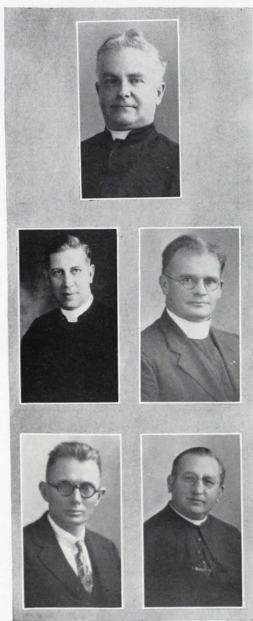
You deserve the highest commendation for the laudable manner in which you have garnered and presented on the pages of your Year Book the outstanding features of the history of the University for 1930.

Your theme—Famous Flights—is an inspiring one. In the courage, in the will to do and to dare, in the pioneering enterprise of our intrepid aviators, you and the many young men who will peruse the pages of this little volume, will find an inspiration to attempt the deeds that will lift you above the level of mediocre accomplishment.

(Rev.) Joseph Burke, C. S. C.,
President.

The Faculty

REV. JOSEPH A. MAGUIRE, C. S. C., PH. D.
 Vice-President of the University
Head of the Department of Chemistry



REV. EDGAR J. MISCH, C. S. C., A. M.
 Dean of Studies, Registrar
History

REV. JAMES J. QUINLAN,
 C. S. C., A. M.
 Dean of the School of
 Business Adm.
Economics, Sociology, Politics

FRANK J. SKEELER, B. S. IN
 E. E., M. S. IN E.
 Dean of the College of Engineering
Mathematics, Physics

REV. PAUL J. FOIK, C. S. C., PH. D.
 Dean of the Graduate School
Librarian, German

The Faculty

REV. WALTER J. O'DONNELL,
C. S. C., PH. D.
Head of the Department of English
Prefect of Religion

REV. GEORGE J. MACNAMARA,
C. S. C., A. B.
Prefect of Discipline
English, Religion

REV. JAMES J. O'BRIEN, C. S. C.,
LITT. B., S. T. B.
Head of the Department of History
Prefect of Holy Cross Hall

REV. CORNELIUS J. HAGERTY,
C. S. C., PH. D.
Head of the Department
of Philosophy
Religion

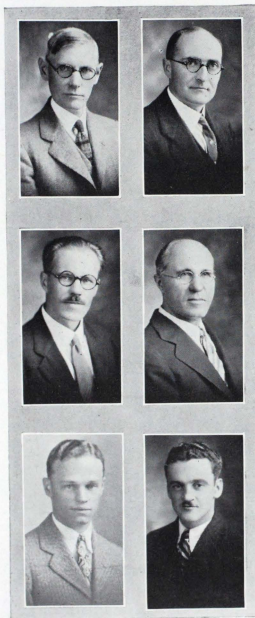
REV. LEO J. HEISER, C. S. C.,
A. B., M. S.
Head of the Department of Biology
Zoology, Botany

REV. GEORGE J. BALDWIN,
C. S. C., A. M.
Mathematics



George J. Baldwin C.S.C.

The Faculty



MATTHIAS A. HOFFMAN, PH. D.
*Department of Finance
and Accounts*

ALBERT J. BIETER, B. J., A. M.
Department of Journalism

GILBERT HART, B. S.
Engineering, Drawing

ALEXANDER MIERS, B. S. IN EDU.
Education, Music

ELMORE H. BORCHES, A. B.
Public Speaking, Mathematics

FRANCIS W. McDONOUGH, B. S. A.
Agriculture



Louis Blériot passes the White Cliffs of Dover in May, 1909

CLASSES

The Faculty



MATTHIAS A. HOFFMAN, PH. D.
*Department of Finance
and Accounts*



ALBERT J. BIETER, B. J., A. M.
Department of Journalism



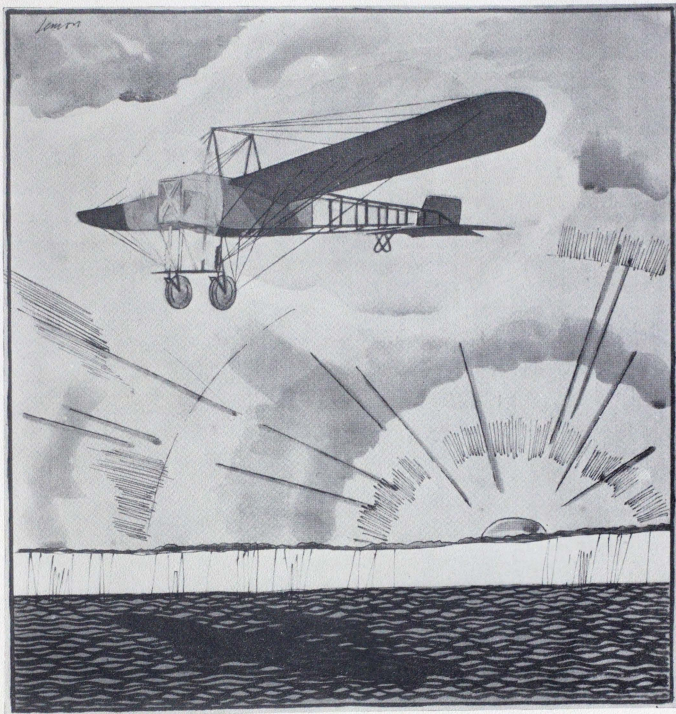
GILBERT HART, B. S.
Engineering, Drawing

ALEXANDER MIERS, B. S. IN EDU.
Education, Music



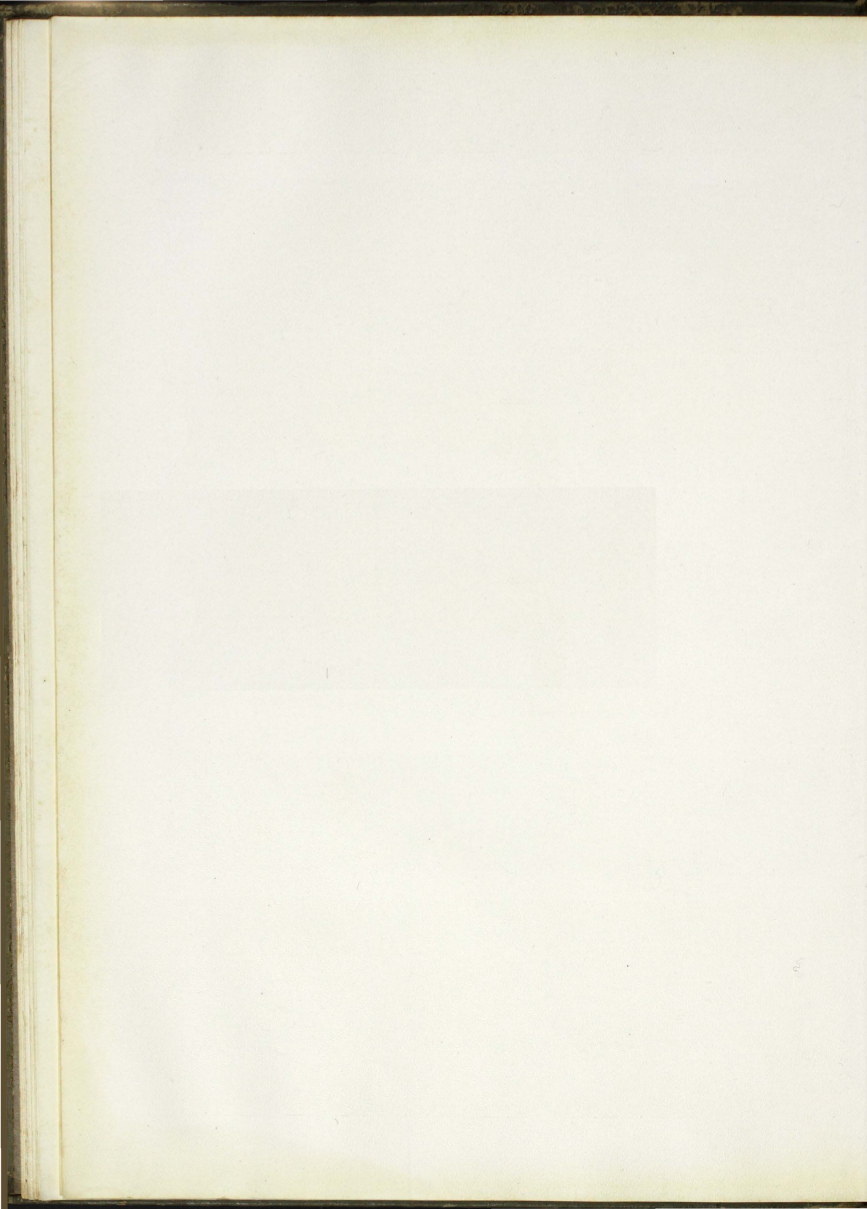
ELMORE H. BORCHES, A. B.
Public Speaking, Mathematics

FRANCIS W. McDONOUGH, B. S. A.
Agriculture



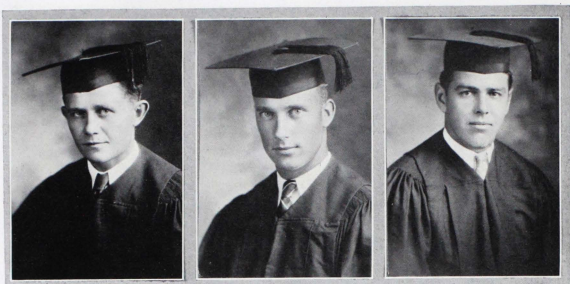
Louis Blériot passes the White Cliffs of Dover in May, 1909

CLASSES





Seniors



Seniors

JOHN E. BARTA, B. A.
Weimar, Texas
"Johnny"

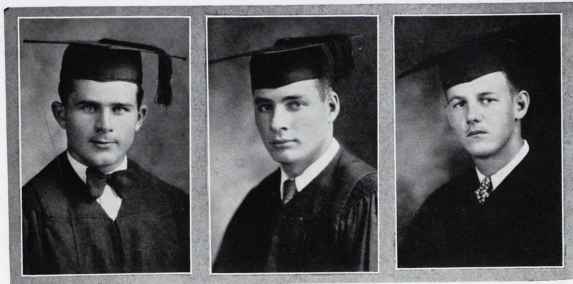
Sorin Scholarship Society;
Czech Club, President '29;
Cheer Leader '29; South Texas
Club '30; Knights of Colum-
bus, Inside Guard '29; Fea-
ture Editor The Tower 1930;
Neo-Scholastic Society '27-'30.

OLIN FARRIS BROTHER-
MAN, B. B. A.
San Antonio, Texas
"Olie"

Neo-Scholastic Society '27-
'30; Monogram Club; Foot-
ball '27-'29, Baseball '27, '28,
'30; South Texas Club '30;
Echo Reporter '30.

REGINALD F. BOURKE,
B. A.
Yoakum, Texas
"Reggie"

Monogram Club, Football
'26, '27; Neo-Scholastic So-
ciety '27-'30; Knights of Co-
lumbus '27; South Texas Club
'30; Glee Club '26, '27.



Seniors

ELTON ANTHONY
BURGER, B. A.
Aberdeen, Washington
"Toney"

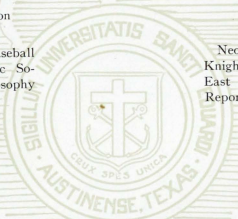
Monogram Club, Baseball
'29, '30; Neo-Scholastic So-
ciety '28, '29; Philosophy
Tutor '30.

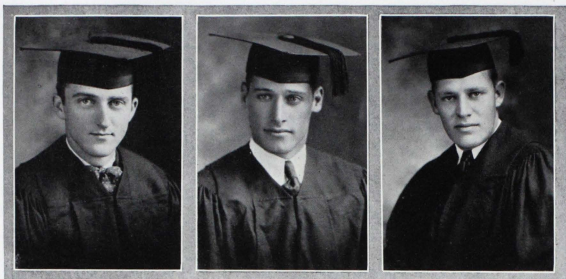
OSCAR ANTHONY
CHAUVIN, B. A.
Galveston, Texas
"Zimpie"

Neo-Scholastic '27 - '30;
Knights of Columbus '27-'30;
East Texas Club '30; Echo
Reporter '29.

MICHAEL JOSEPH
BYRNE, B. B. A.
Cuero, Texas
"Mike"

Neo-Scholastic Society '27-
'30; Glee Club '26, '27; Choir
'26, '27; South Texas Club '30;
Secretary, Orchestra '25.





Seniors

**SYLVESTER VINCENT
CONWAY, A. B. in Sci.**
Plankinton, S. Dakota
"Hubby"

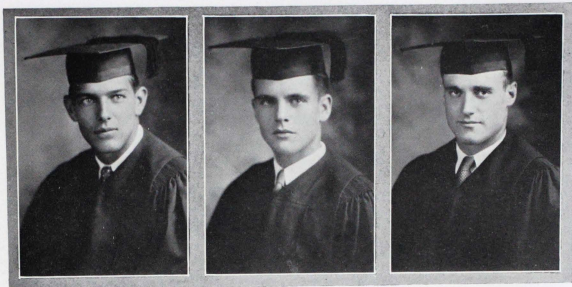
Neo-Scholastic Society '29.

THOMAS F. ESTES, B. A.
Austin, Texas
"Tommy"

Pres. Sophomore Class;
Knights of Columbus '28, '29;
Neo-Scholastic Society '27,
'28, '29; Ass't Editor The
Tower 1928; Monogram Club,
Football '26; South Texas
Club '30; Dramatic Club '28;
Students Activities Council
'27, '28; Scribblers Club '27;
Chamber of Commerce '27;
Chairman Senior Ball Com-
mittee.

JOHN J. DICKMANN,
B. S. in E.
Muskogee, Okla.

Pres. Senior Class; Pres.
Students Activities Council;
Sorin Scholarship Society,
Pres. '30; Neo-Scholastic So-
ciety '27, '28; Circulation
Manager The Tower 1930;
Knights of Columbus '30;
Winner Sophomore Engineer-
ing Medal '28; Monogram
Club; Basketball '30; Epsilon
Nu Gamma '27-'29; Student
Instructor '28, '29.



IRWIN J. FANETTE,
B. B. A.
Beaumont, Texas
"Chesty"

Monogram Club, Football '28-'29; Neo-Scholastic Society '27-'28; Glee Club '27-'28; Choir '27-'28; Asst. Editor The Tower 1929; Editor-in-Chief The Tower 1930; Pres. Junior Class; Students Activities Council '27-'28-'29; Knights of Columbus '27-'29; Warden '28; Deputy Grand Knight '29; East Texas Club '30; Scribblers Club '27; Editor Students Directory '29; Echo Reporter '28; Senior Ball Committee.

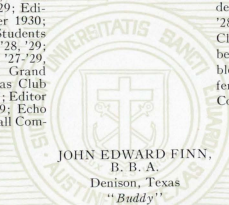
Seniors

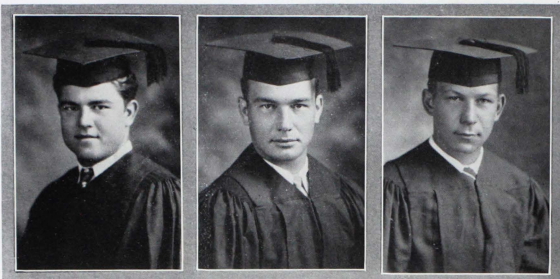
ROBERT C. FRISCH,
B. B. A.
Elgin, Illinois
"Bob"

Monogram Club, Football '27-'29; Neo-Scholastic Society '27-'30; Illinois Club '28; Students Activities Council '26-'28; Echo Reporter '28; Exile Club '30; Orchestra '26; Chamber of Commerce '27; Scribblers Club '27; All Texas Conference End 1929; Senior Ball Committee.

JOHN EDWARD FINN,
B. B. A.
Denison, Texas
"Buddy"

Scribblers Club '27; Knights of Columbus '27-'30; Treasurer '29-'30; Sorin Scholarship Society '29-'30; Vice-Pres. '30; North Texas Club, Pres. '29-'30; Echo Reporter '28; Managing Editor '30; Sports Editor '29; Neo-Scholastic Society '28-'30; Sec'y-Treas. Senior Class; Sports Editor The Tower 1930; Scholarship Delegate '30; Senior Ball Committee.





Seniors

LOUIS L. HERTEN-
BERGER, B. S. in E.
Waco, Texas
"Louie"

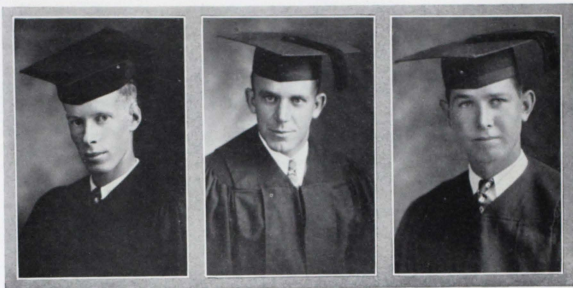
Monogram Club, Football '26-'29, Co-Captain '29, All Texas Conference Guard '27, '29; Epsilon Nu Gamma '27-'29; Knights of Columbus '27-'29, Inner Guard '28, Advocate '29; Neo-Scholastic '27-'29; Sergeant-at-Arms Sophomore Class; Appointed Football Line Coach Rice Institute 1930.

LEON C. KOPECKY, B. A.
Yoakum, Texas
"Doc"

Neo-Scholastic Society '27-'29; Knights of Columbus '28, '29; Czech Club, Financial Sec'y '29; South Texas Club; Glee Club '26, '27; Choir '26-'28; Scribblers Club '27; Student Instructor '28, '29; Organization Editor The Tower 1930.

HAROLD R. JANSING,
B. A.
Westphalia, Texas
"Tid Bits"

Knights of Columbus '26-'30, Outside Guard '27, Trustee '28; Neo-Scholastic Society '27-'30, Vice-Pres. '28, Pres. '29; Sorin Scholarship Society; Monogram Club, Basketball '27-'29, Baseball '27-'30, Football '28, '29; Chas. B. Cook athletic award '28 and '29; All Texas Conference Full-back '28, Center, basketball '28; Echo Editor '29; St. Edward's Favorite 1930.



Seniors

LOYE ANTHONY
KOSSBIEL, B. B. A.
Falfurrias, Texas
"Flossie"

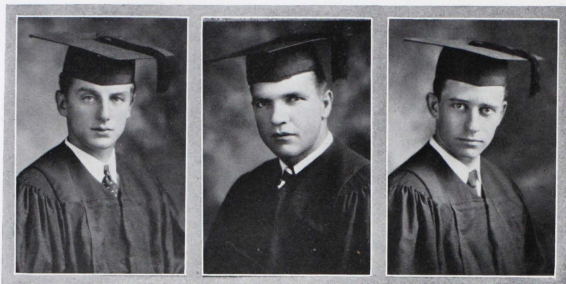
Knights of Columbus '23,
'29; Dramatic Club '28, '29;
Neo-Scholastic Society '27,
'30; South Texas Club '30.

FRED CHARLES
O'HAGAN, B. S. in E.
San Antonio, Texas
"Prunty"

Glee Club '26, '27; Choir
'26; Neo-Scholastic Society
'27, '28; Epsilon Nu Gamma
'27, '28; Knights of Columbus
'29; South Texas Club '30.

ALBERT CHARLES
LORAN, B. S. in E.
Munday, Texas
"Al"

Monogram Club, Baseball
'27-'30; Epsilon Nu Gamma
'27, '28; Sorin Scholarship Soci-
ety; Scholarship Delegate
'30; North Texas Club '28, '29;
Knights of Columbus '27-'29,
Outside Guard '29; Neo-Scho-
lastic Society '27, '28; Vice-
Pres. Junior Class; Scribblers
Club '27; Student Activities
Council '29.



Seniors

GEORGE FRANCIS
PESSONEY, B. B. A.
Palestine, Texas
"Chic"

Knights of Columbus '27-'30, Outside Guard '29; East Texas Club '30; Neo-Scholastic Society '27-'29; Dramatic Club; Orchestra, Pres. '28, '29; Band '28, '29; Glee Club '27, '28; Choir '27-'29; Grind Editor The Tower 1930; Cheer Leader '30; Chamber of Commerce '27.

RALPH JOSEPH
WARNER, B. S. in E.
Ft. Worth, Texas
"Boss"

Business Manager The Tower 1930; Epsilon Nu Gamma '27-'29; Sorin Scholarship Society, Treas. '29; Neo-Scholastic Society '27, '28; Knights of Columbus '28, '29, Recording Sec'y '29; Dramatic Club '27-'29; Tennis '29, '30, Capt. '30; Student Instructor '28, '29; Scribblers Club '27; Mgr. Students Directory '29.

AL S. VOGT, B. B. A.
Victoria, Texas
"Sam"

Monogram Club, Football '26-'29; Neo-Scholastic '27-'29; Echo Reporter '28; South Texas Club '30.



ADIEU

It's farewell, fellows, I'm afraid.
We've trod a pleasant trail
That's led us o'er many a hill,
And many a grassy dale.

We've "hit the road" a goodish bit
With luck, some good, some poor;
A Packard, maybe, yesterday
A Ford the day before.

You'll find it much the same in life
A bit of luck today
To compensate us for the strife
That made the others grey.

Then buck up, buddies, chin in air
Tho' never more we meet,
We'll hold a chain of memories rare;
A life's eternal treat.

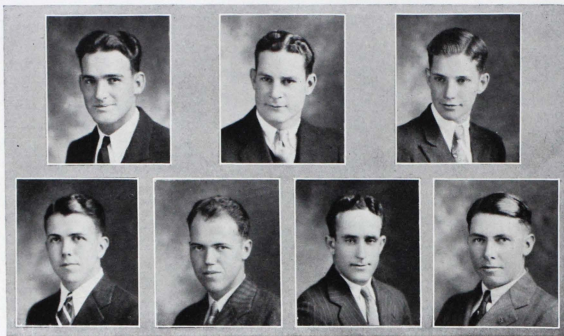
So smile, tho' each knows how it hurts
To lose a staunch, true friend,
For us it's not "goodbye" at all,
But "till we meet again."

—V. W. P.

In Memoriam
Pierce J. Quirk
Bernard S. Wunsch



Juniors



Juniors

ROLAND T. BLACKWELL
Business Administration
Weslaco, Texas

Sorin Scholarship Society;
South Texas Club; Neo-Scholas-
tic Society; Sec'y Junior
Class; Monogram Club; De-
bating Team.

JACK CAPLIS
Arts and Letters
Elm Grove, Louisiana

Monogram Club; Neo-
Scholastic Society; Exile Club.

WILLIAM M. DONOHUE
Arts and Letters
Ennis, Texas

Knights of Columbus; East
Texas Club; Neo-Scholastic
Society.

CHARLES E. DORSEY
Engineering
Electra, Texas

Sorin Scholarship Society;
North Texas Club; Epsilon
Nu Gamma; Knights of Co-
lumbus; Neo-Scholastic So-
ciety.

HARRY L. HARPER
Business Administration
Menard, Texas

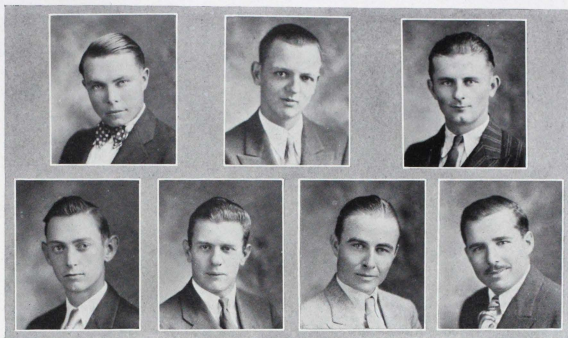
Neo-Scholastic Society;
Knights of Columbus.

JOSEPH A. DORSEY
Business Administration
Electra, Texas

Neo-Scholastic Society;
Knights of Columbus; Secy.
and Treas. North Texas Club.

DAVID L. FIGARI
Arts and Letters
Galveston, Texas

Monogram Club; Pres. East
Texas Club; Neo-Scholastic
Society; Choir; Students Ac-
tivities Council; Glee Club;
Pres. Sophomore Class.



Juniors

JOSEPH P. HARPER
Engineering
Menard, Texas

Epsilon Nu Gamma; Sorin Scholarship Society; Knights of Columbus; Neo-Scholastic Society.

JOSEPH A. KOEGLER
Business Administration
Waterloo, Iowa

Sorin Scholarship Society; Neo-Scholastic Society; Glee Club; Choir; Trustee, Knights of Columbus; Dramatic Club; Capt. Debating Team.

EDWARD J. OTT
Business Administration
Waterloo, Iowa

Grand Knight, Knights of Columbus; Sorin Scholarship Society; Neo-Scholastic Society; Pres. Junior Class.

LOUIS H. HOOPES
Arts and Letters
Beaumont, Texas

Dramatic Club; Neo-Scholastic Society; Knights of Columbus; East Texas Club; Sorin Scholarship Society.

STEVE S. HYZEDOS
Engineering
Bridgeport, Texas

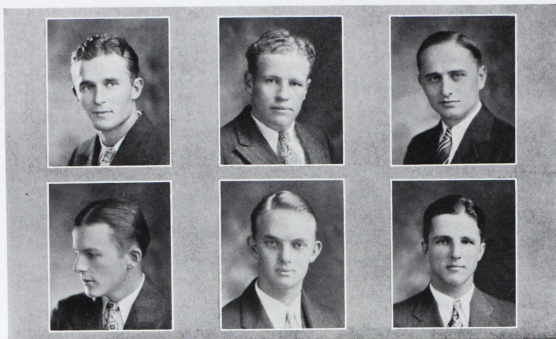
Epsilon Nu Gamma; Neo-Scholastic Society; Czech Club; Orchestra.

RANDOLPH G. PAPICH
Arts and Letters
Beaumont, Texas

Epsilon Nu Gamma; Sec'y-Treas. East Texas Club; Dramatic Club; Business Mgr. The Tower 1931; Student Mgr. Football; Knights of Columbus; Tower Staff '30; Neo-Scholastic Society.

V. WELDON PANNELL
Arts and Letters
Austin, Texas

Neo-Scholastic Society; Epsilon Nu Gamma; South Texas Club; Glee Club; Choir.



Juniors

HENRY AYOSE PARMA
Business Administration
Ennis, Texas

Monogram Club; Neo-Scholastic Society; East Texas Club.

EUGENE L. SULLIVAN
Business Administration
El Paso, Texas

Neo-Scholastic Society; Monogram Club; Epsilon Nu Gamma; Dramatic Club; South Texas Club; Sgt. at Arms, Junior Class.

JOHN L. SULAK
Arts and Letters
LaGrange, Texas

Financial Sec'y Knights of Columbus; Exchange Editor, The Echo; South Texas Club; Vice-Pres. Czech Club; Choir; Sorin Scholarship Society; Students Activities Council, Sec'y; Debating Team; Neo-Scholastic Society; Editor The Tower 1931.

JAMES HENRY STRAUS
Arts and Letters
Hallettsville, Texas

Sec'y Czech Club; Neo-Scholastic Society; Echo Staff; Knights of Columbus; South Texas Club.

ALBERT TURNER
Arts and Letters
San Angelo, Texas

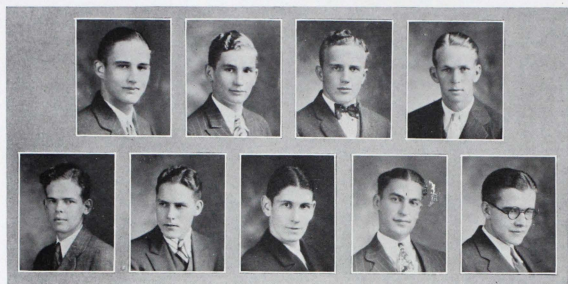
Knights of Columbus, Warden '30; Sorin Scholarship Society; Spanish Club; Dramatic Club; Echo Staff; Neo-Scholastic Society; Treas. Junior Class.

EDWIN ARRELL YOUNG
Business Administration
Houston, Texas

Glee Club; Choir; East Texas Club; Neo-Scholastic Society; Sec'y Freshman Class.



Underclasses



Sophomores

WALTER BEACH
Arts and Letters
Oenaville, Texas

JESSE BRAMMER
Business Administration
Houston, Texas

C. D. BLANCHETTE
Business Administration
Beaumont, Texas

ABDON BOMBA
Business Administration
Yorktown, Texas

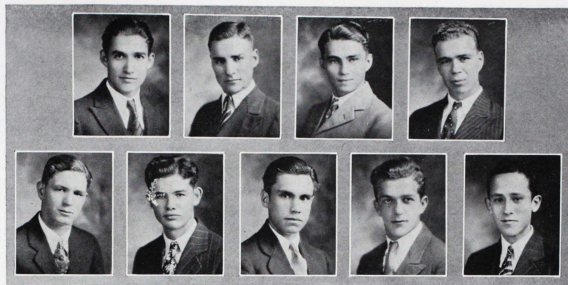
LEO BRAUER
Engineering
Lufkin, Texas

WILLIAM COFFEY
Business Administration
Wichita Falls, Texas

PAT BURKE
Business Administration
Beeville, Texas

JOHN CALIFA
Arts and Letters
Falfurrias, Texas

TOM BURKE
Business Administration
Houston, Texas



Sophomores

FRANCIS COOVER
Arts and Letters
El Paso, Texas

MARVIN FARR
Arts and Letters
Sherman, Texas

LEOPOLDO DURAN
Arts and Letters
Gallup, New Mexico

GEORGE FALTISEK
Engineering
Shiner, Texas

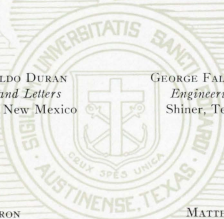
JOHN GAIDA
Arts and Letters
Ennis, Texas

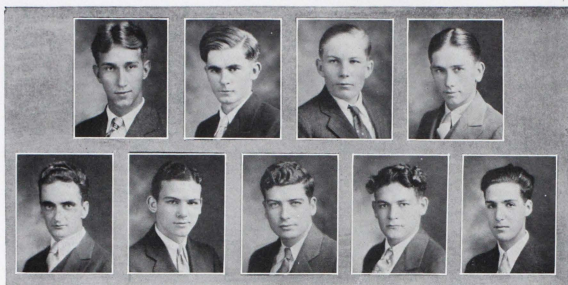
WALTER KASBERG
Business Administration
Oenaville, Texas

FRANK HERRON
Engineering
El Paso, Texas

MATTHEW HOSINSKI
Arts and Letters
South Bend, Indiana

MACLOVIO HOLGUIN
Arts and Letters
El Paso, Texas





Sophomores

HERBERT KELLER
Business Administration
South Bend, Indiana

WILLIAM MCCURDY
Arts and Letters
Beeville, Texas

FRANCIS LAFFERTY
Engineering
Tulsa, Oklahoma

VINCENT McCABE
Business Administration
Rio Hondo, Texas

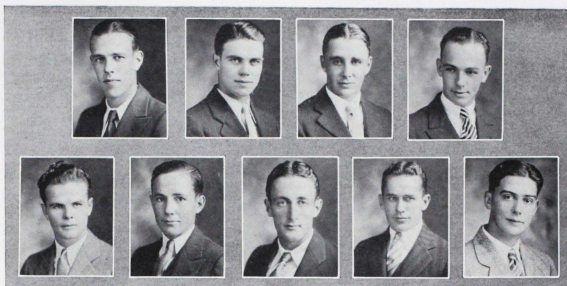
RAPHAEL McDONOUGH
Arts and Letters
Oxford, Ohio

MANUEL OCHOA
Business Administration
San Antonio, Texas

JOSEPH MCGUIRE
Arts and Letters
Oklahoma City, Oklahoma

LUIS MUNOZ
Engineering
El Paso, Texas

WILLIAM MIMS
Business Administration
Laredo, Texas



Sophomores

JOHN O'CONNOR
Arts and Letters
Beeville, Texas

ROY PITRE
Arts and Letters
Pt. Arthur, Texas

RICHARD O'ROURKE
Arts and Letters
Galveston, Texas

WILLIAM O'ROURKE
Engineering
Muskogee, Oklahoma

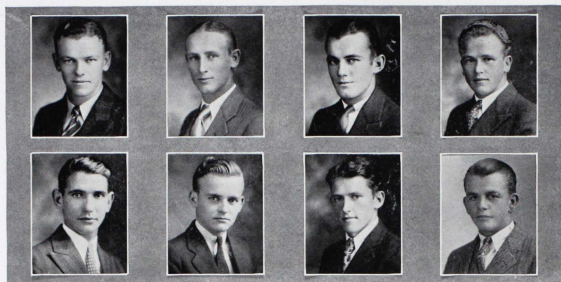
WILLIAM QUIRK
Business Administration
San Antonio, Texas

REUBEN SLIVA
Business Administration
Lott, Texas

JOHN RAFFAELLI
Arts and Letters
Texarkana, Texas

MILTON SCOTT
Arts and Letters
Austin, Texas

MARIO RANSOM
Business Administration
San Antonio, Texas



Sophomores

CHARLES STRAUSS
Business Administration
Hallettsville, Texas

ALBERT VANCE
Arts and Letters
Devine, Texas

RICHARD STRAUSS
Business Administration
Shiner, Texas

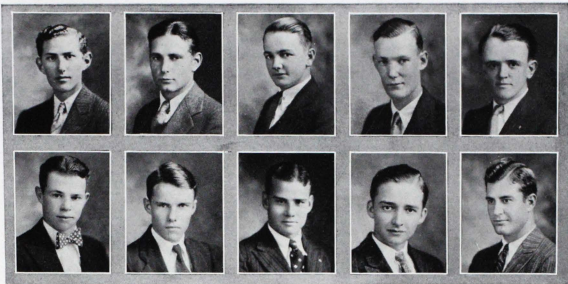
CHARLES TREFFLICH
Business Administration
Corpus Christi, Texas

SEVERO VILLARREAL
Arts and Letters
Coahuila, Mexico

THOMAS YOUNG
Arts and Letters
Corpus Christi, Texas

LEWIS WALLIN
Engineering
Austin, Texas

JAMES WATKINS
Engineering
Post, Texas



Freshmen

CARLOS BENEVIDES
Business Administration
Lardeo, Texas

ROBERT BOLTON
Business Administration
Marion, Texas

CHARLES BROWN
Arts and Letters
Francita, Texas

FRANCIS BIELKOWSKI
Engineering
Wichita Falls, Texas

PHILIP BRADY
Business Administration
Ardmore, Okla.

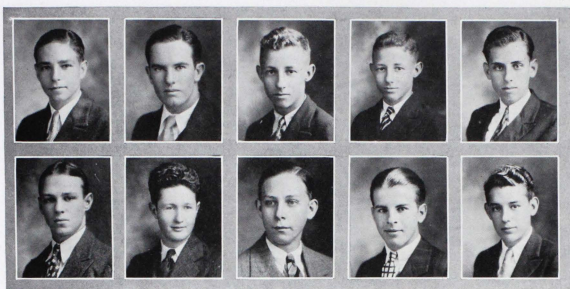
MORGAN BYRNE
Business Administration
Beeville, Texas

DENIS COLLINS
Arts and Letters
Dallas, Texas

BEN BUSBY
Arts and Letters
Denison, Texas

PAT CANION
Business Administration
Austin, Texas

ERNEST COWART
Business Administration
San Antonio, Texas



Freshmen

ROBERT CURTIS
Engineering
Pt. Arthur, Texas

ANTHONY DEHARO
Arts and Letters
Dallas, Texas

JACK DEMACK
Business Administration
Galveston, Texas

DOUGLAS DEFFERARI
Arts and Letters
Galveston, Texas

RAPHAEL DEHARO
Arts and Letters
Dallas, Texas

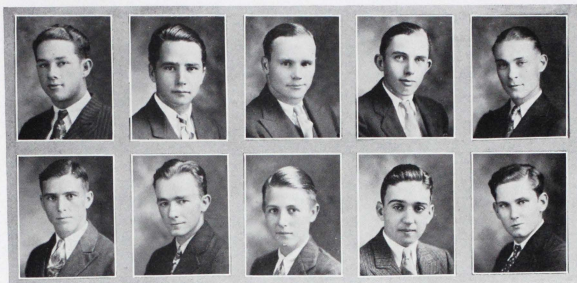
MARK DONOVAN
Arts and Letters
Oklahoma City, Okla.

LEONARD ENDRES
Engineering
Muenster, Texas

EDWARD DONOHUE
Arts and Letters
Beaumont, Texas

EDWARD EMMELHAINZ
Engineering
Pueblo, Mexico

J. BEN FANETTE
Business Administration
Beaumont, Texas



Freshmen

JOHN FINGER
Business Administration
Hondo, Texas

JOHN FITZGIBBON
Business Administration
Galveston, Texas

BERTIN GANTOR
Engineering
Denison, Texas

JOE FINGER
Business Administration
Hondo, Texas

WILLIAM FORD
Business Administration
Douglas, Arizona

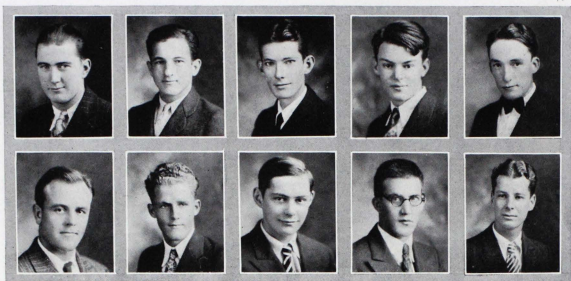
JOSEPH GOETZ
Arts and Letters
Seguin, Texas

NOE HINOJOSA
Business Administration
Rio Grande, Texas

JOHNSON GAULT
Business Administration
Austin, Texas

WILLIAM HIGGINS
Arts and Letters
Ft. Worth, Texas

SIDNEY JAMES
Arts and Letters
Encinal, Texas



Freshmen

JOHN JANES
Engineering
Austin, Texas

WILLIAM JOHNSON
Arts and Letters
Gulf, Texas

PAT KELLY
Arts and Letters
Galveston, Texas

STANLEY JOHNSON
Engineering
San Antonio, Texas

GEORGE KEAYS
Engineering
El Paso, Texas

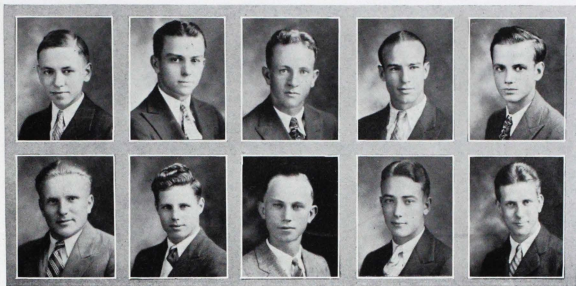
K. J. KIVLIN
Business Administration
San Antonio, Texas

BEN LEE
Engineering
Tankersly, Texas

ANDREW KIVLIN
Business Administration
San Antonio, Texas

JOSEPH KORIOTH
Engineering
Sherman, Texas

HERMAN LINN
Arts and Letters
San Antonio, Texas



Freshmen

WILLIAM LOTT
Engineering
Lott, Texas

HOMER MCELROY
Arts and Letters
Ennis, Texas

CHARLES MCLEAN
Engineering
Houston, Texas

WILLIAM MCCUNE
Arts and Letters
Denison, Texas

PAT McLAUGHLIN
Arts and Letters
Taylor, Texas

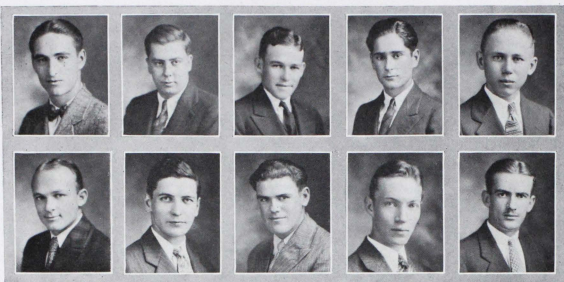
PAUL MESQUITA
Arts and Letters
Galveston, Texas

CLAUDE MARTIN
Engineering
Texarkana, Texas

NELS MACKI
Arts and Letters
Stambough, Mich.

CHARLES MARIK
Arts and Letters
East Bernard, Texas

ROBERT MICEL
Arts and Letters
San Antonio, Texas



Freshmen

JOSEPH MOONEY
Arts and Letters
Denison, Texas

THEODORE MUSSETT
Engineering
Beville, Texas

FORREST POHLER
Business Administration
Rowena, Texas

JOSEPH MURPHY
Arts and Letters
Texarkana, Texas

RAYMOND NESTER
Business Administration
D'Hanis, Texas

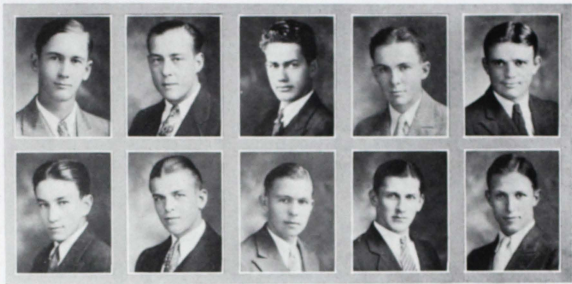
ALOYSIUS QUINLAN
Arts and Letters
Lima, Ohio

CARL RIDLEY
Arts and Letters
Oklahoma City, Okla.

MILTON QUEBEDEAUX
Arts and Letters
Pt. Arthur, Texas

CYRIL RACE
Engineering
Chicago, Ill.

WILBERT RILEY
Engineering
Paducah, Ky.



Freshmen

CHARLES ROBERTS
Engineering
Austin, Texas

JAMES ROBERTS
Engineering
Lubbock, Texas

ELIAS ROUGEAUX
Arts and Letters
Basile, La.

FRANCIS ROBERTS
Engineering
Mission, Texas

JOSE RODRIGUEZ
Arts and Letters
Laredo, Texas

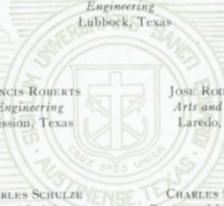
CHARLES SCHULZE
Business Administration
Irving, Texas

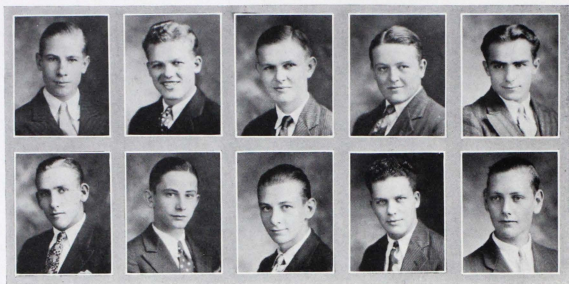
CHARLES SCHWAB
Business Administration
Palestine, Texas

JOSE SAMANIEGO
Engineering
El Paso, Texas

JOHN SCHUMACHER
Business Administration
Rutersville, Texas

FRED SEITZ
Engineering
Wichita Falls, Texas





Freshmen

LIONEL SMITH
Business Administration
El Paso, Texas

ROBERT STAVINOGHA
Business Administration
Temple, Texas

PETER TALERICO
Arts and Letters
Caspian, Mich.

JOSEPH SPRINGER
Arts and Letters
Waterloo, Iowa

GUS STRAUSS
Arts and Letters
Hallettsville, Texas

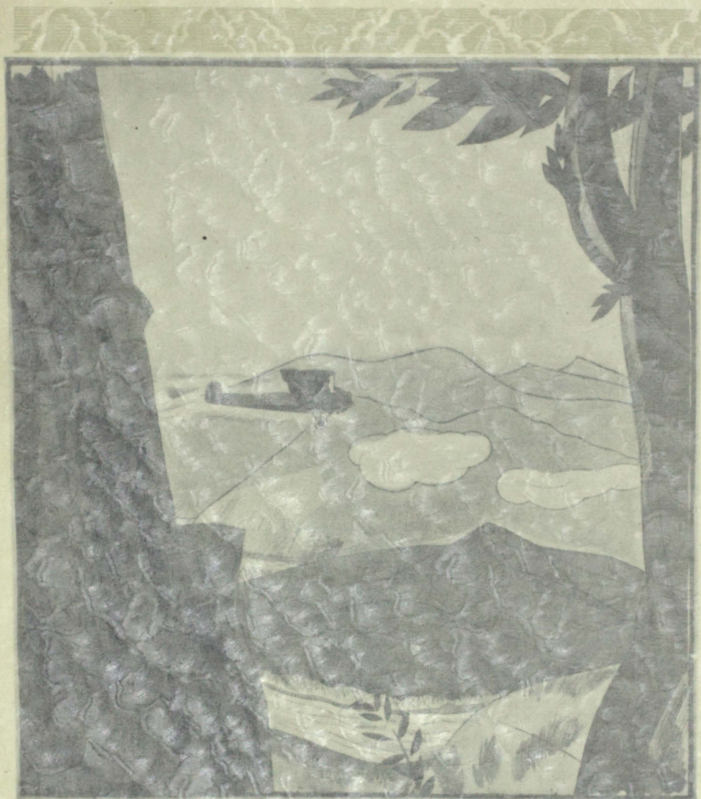
FLOYD TITUS
Engineering
Pt. Arthur, Texas

WILLIAM WEEKS
Arts and Letters
Waco, Texas

LOYD TATE
Engineering
N. Little Rock, Ark.

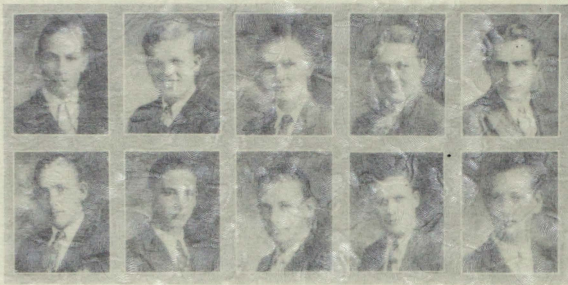
JOSEPH WEARDEN
Engineering
Goliad, Texas

WILLIAM WURZINGER
Arts and Letters
Woodstock, Ill.



Crossing the States in the year of the same run. Lockman, Macready & Kelly, 1923

ACTIVITIES



Freshmen

EDWIN SMITH
Business Administration
El Paso, Texas

ROBERT SYMINGTON
Business Administration
Temple, Texas

PETER TAHERICO
Arts and Letters
Caspian, Mich.

JOSEPH SPRINGER
Arts and Letters
Wichita, Kans.

LESLIE STANBORN
Arts and Letters
Haltersville, Texas

FRANK TITUS
Engineering
El Paso, Texas

WILLIAM WEEKS
Arts and Letters
Waco, Texas

LEWIS TATE
Engineering
Little Rock, Ark.

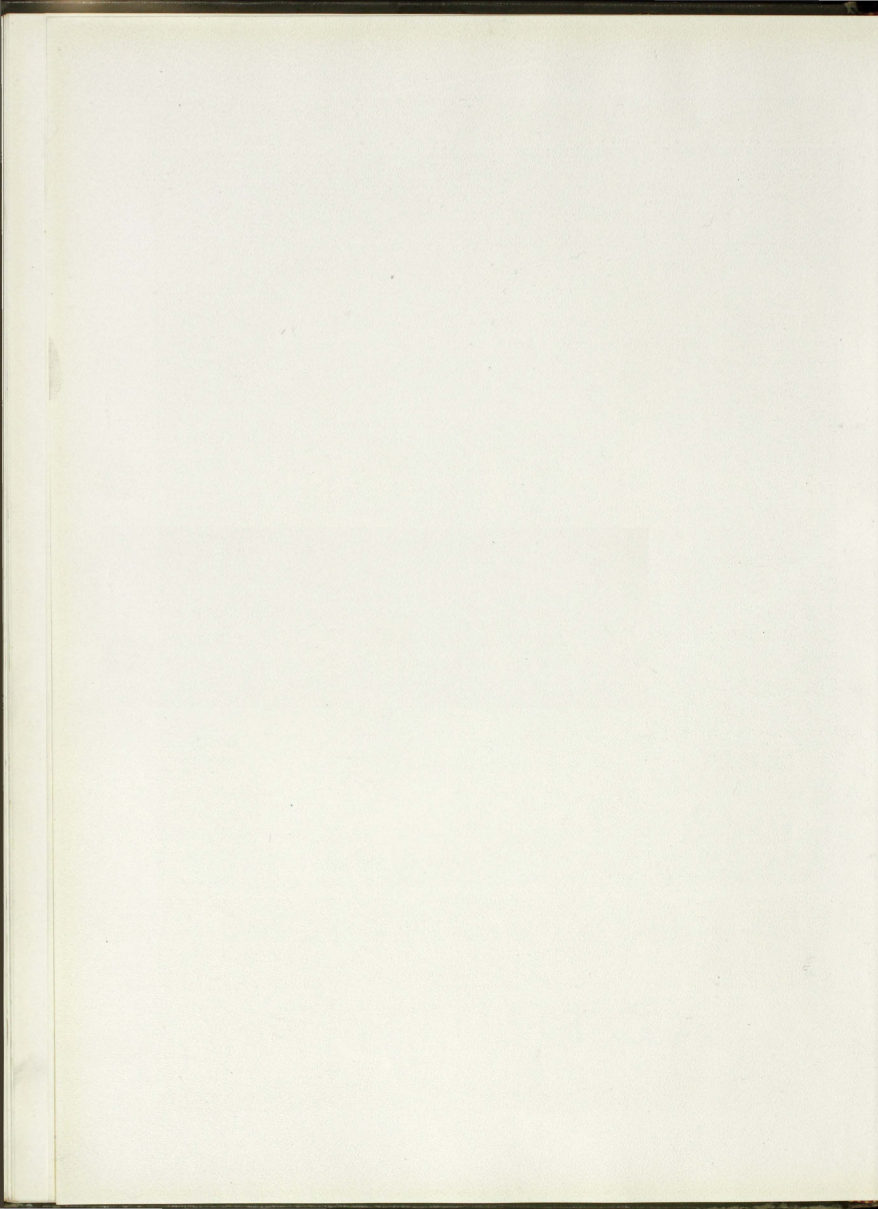
JOHN WEARON
Engineering
Lubbock, Texas

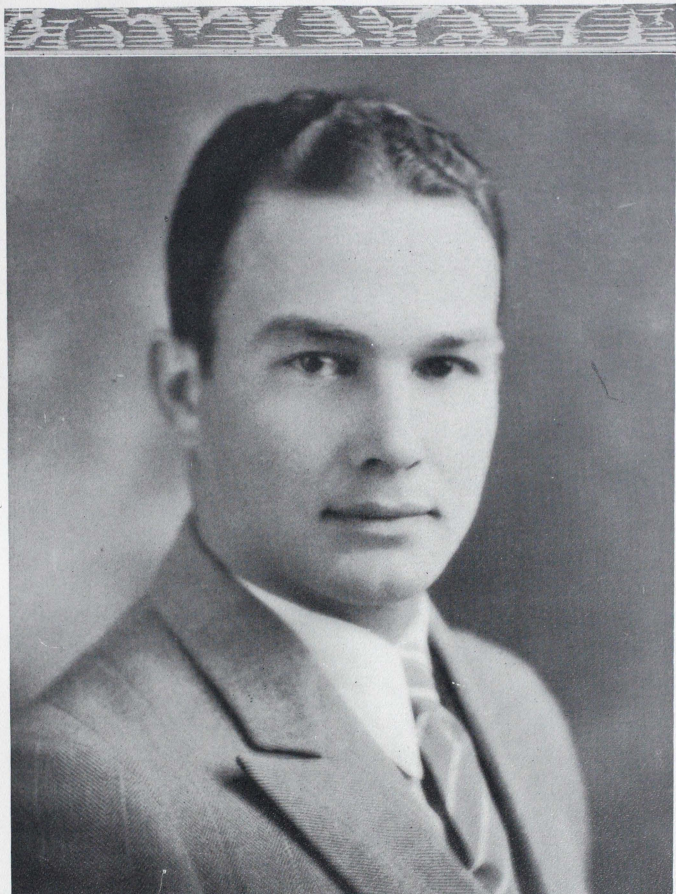
WILLIAM WURTZINGER
Arts and Letters
Woodstock, Ill.



Crossing the States in the span of the same sun. Lieutenants Macready & Kelly, 1923

ACTIVITIES





HAROLD R. JANSING
Most Popular Student
Best All-Round Athlete
Most Exemplary Student



MAURINE BRAUER
Students' Favorite



KATHRYN MAYFIELD
Students' Favorite



REV. WALTER J. O'DONNELL
One who has done much for THE TOWER



Organizations

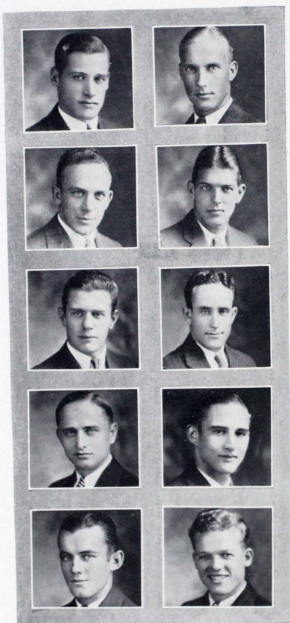
Student Activities Council

Given greater power by virtue of the organization of the Department of Student Welfare, the Student Activities Council this year devoted its efforts to the regulation of student affairs and to the promotion of student activities. To this organization must go in large measure credit for the success of the year 1929-30 at St. Edward's.

Among the many activities of the student council this year were: the promotion of a student trip to Houston for the St. Edward's-Rice football game, inauguration of a bus service to Austin, sponsoring of "Campus Collegians," a modern minstrel, selection of the principal contestants for the Tower beauty

election, securing of more favorable hours for, and regulation of all dances, approving of all new organizations, securing various improvements about the campus, and presenting the clarified views and wishes of the student body before the University authorities.

The S. A. C. owes its success this year, as in previous years, to the co-operation it received from both the student body and the faculty. Its support comes as a result of the constitution which provides that each class president shall be a member of the council. Then, to further insure sane action, the upperclasses are given the greater representation; the seniors having four representatives, the juniors three, the sophomores two, and the freshmen one. All students were given the privilege of appearing before the council meetings to present their views and to ask the council's approval and support of various undertakings.



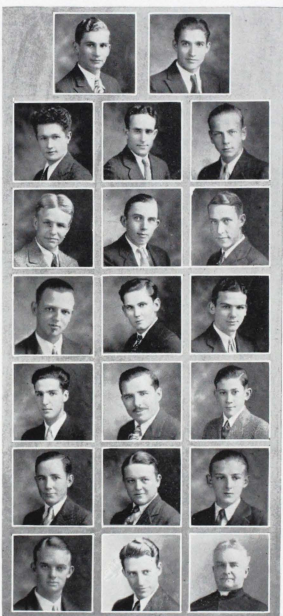
Outer row: DICKMANN, PRESIDENT; LORAN; OTT; SULAK, SEC'Y; TREFFLICH.
Inner row: BOURKE, FANETTE, FIGARI, BEACH, SPRINGER.

Dramatic Club

The Dramatic Club under the able direction of Rev. Joseph Maguire, C. S. C. experienced one of its most successful years. On four occasions the club gave outstanding performances never before so well enacted on the campus. Dramatics this year have reached an importance in extra-curricular work never before achieved. On November 18 four one-act plays were given in the University auditorium. Turner and Coover were outstanding in "At The Rising of The Moon." Warner and Raffaelli shone in a drama of old Ireland, "The Road to Connaugh." "The Little Girl" and "Post Mortems" were the other two plays presented at the time.

A Christmas play "The Three Kings" was presented on December 17. Coover, Ford, and Ochoa as the kings and Raffaelli as St. Joseph were outstanding. "The Rivals," by Sheridan, was presented on March 3. Ochoa was the star with Turner and Raffaelli taking the other leading parts. The Lenten play, "Mary Magdala," written by Fr. Maguire, was enacted on April 7. Ochoa as Judas again excelled.

Feminine characters in the different plays were acted by young ladies from town whose work was always appreciated. Mrs. Martyn Elliott, and Miss Pelham Elliott of Austin kindly lent their assistance to the players in costume and make-up.



Top: BLANCHETTE, COOVER.

Inner row: DONOVAN, FOLEY, HOOPES, OCHOA, RAFFAELLI, TURNER.

Middle row: FIGARI, FORD, S. JAMES, PAPICH, G. STRAUSS, WARNER.

Outer row: FINNEGEN, C. HARPER, MCGUIRE, PRATT, THORNTON, FR. MACGUIRE, (Director.)

East Texas Club

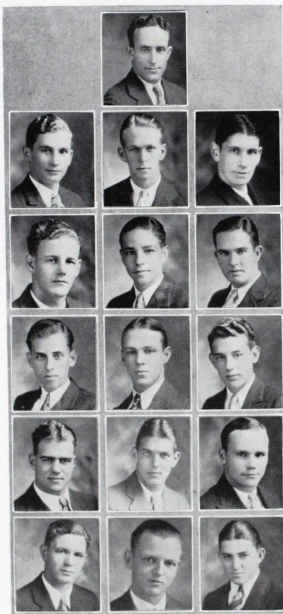
A new and outstanding organization increased the activities about the campus by its formation in February. The first meeting was held on the 17th of February. Here officers for the East Texas club were elected from among the number of about thirty members present. Those elected were Dave Figari, president; Richard O'Rourke, Vice-President; and Randolph Papich, Sec'y-Treas.

The boundaries for the club were decided upon as the Sabine river on the east and the Brazos river on the west, taking in the cities of Beaumont, Port Arthur, Houston, and Galveston.

The purpose of forming the club was primarily to form a closer bond of friendship and union among the students of the university who reside in the eastern section of the state. Secondly to compete with the other organizations and clubs on the campus in intramural sports and other functions.

When the charter and constitution were drawn up and presented they were unanimously approved by the members of the club and sanctioned by the Student Activities Council.

The club has since its beginning, very well achieved its aim of organization, greatly so in the promotion of friendship among the members and more so in the strong competition which it has contributed to opposition in sports and scholastic activities.



Top: FIGARI.

Outer row: BLANCHETTE, CHAUVIN, DEMACK,
C. FANETTE, GAIDA.

Middle row: BRAMMER, CURTIS, E. DONOHUE,
I. FANETTE, HOOPES.

Inner row: T. BURKE, DEFFARI, B. FANETTE,
FITZGIBBONS, W. IRWIN.

East Texas Club

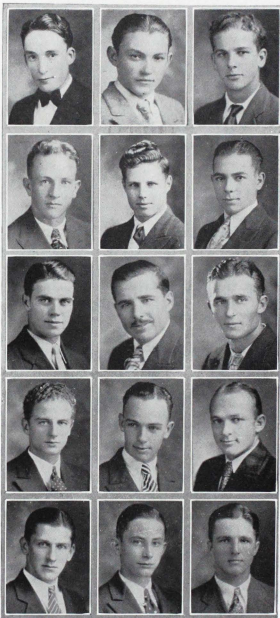
(CONCLUDED)

Up to this time the East Texas club has led the field of athletics, having the highest average in baseball intramurals. The club got under way late for the forming of a basketball team but their prospects for a strong team next year are great. The late organization of the club has also prevented it from giving a dance; they could not obtain a favorable date therefore their social activities in this line were lacking.

The club thus far has shown steady progress. Although they have not reached the highest achievements, their promises for a very outstanding and strong club next year are good.

In the last two years there have been a large number of clubs formed, each having its own distinct purpose and aim, many of them have moved considerably forward but probably the most steadily increasing prosperity is shown in the East Texas club. Their primary and also their secondary purpose has been reached. The Easterners are in no way through progressing, however. They are going right on to the highest peaks of achievements in all phases of life about the campus.

One who watches will find that in a very short time the newly formed East Texas club has soared to the recognition of all, and proudly so.



Inner row: KELLY, McELROY, R. O'ROURKE,
PESSONEY, SCHWAB.

Middle row: KLEIN, MESQUITA, PAPICH,
PITRE, TITUS.

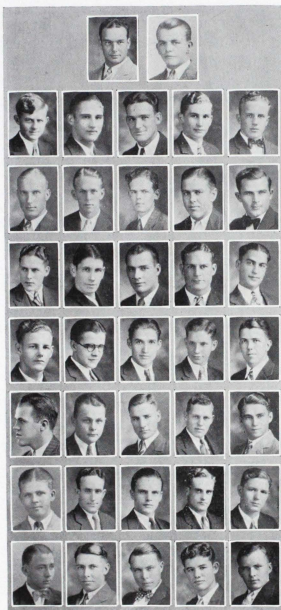
Outer row: MACATEE, P. MURPHY, PARMA,
QUEBEDEAUX, E. YOUNG.

Neo-Scholastic Society

The Neo-Scholastic Society, the philosophical society, was founded several years ago by Father Schumacher. The society is devoted entirely to the discussion of philosophical questions at its regular meetings, which supplement the work done in the various philosophical classes. Meetings are held regularly twice a month and at these, papers written by members on some interesting or important philosophical topic are read. Lively discussions follow which sometimes develop into heated arguments. Excellent practice in clashing with the opinion or viewpoint of others is thus afforded the student, because recourse

must always be had to fundamental principles before an argument of this nature can be settled or an opponent convinced of his error.

St. Thomas Aquinas day was celebrated by all the philosophers in the traditional manner. Father Hagerty officiated at a special Mass and Father O'Brien delivered a short address on St. Thomas, the patron of Catholic philosophers. A meeting was held at 10 o'clock at which several papers were read and discussed, and at which Archbishop Hurth gave an interesting talk. A banquet for the members followed this at one o'clock.



Top: JANSING, T. YOUNG.

Outer row: BARTA, R. BOURKE, P. BURKE, CHAUVIN, J. DORSEY, E. FETTE, GUERRA.

Second row: BEACH, BRAMMER, T. BURKE, COFFEY, DUNNE, FIGARI, H. HARPER.

Third row: BLACKWELL, BRAUER, BYRNE, COOVER, DURAN, FINN, J. HARPER.

Fourth row: BLANCHETTE, BROTHERMAN, CAPLIS, DONOHUE, ESTES, FRISCH, HERRON.

Inner row: BOMBA, BURGER, CALIFA, C. DORSEY, FALTISEK, GAIDA, HIJOSKY.

Neo-Scholastic Society

(CONCLUDED)

A splendid expression of the character of the work done by the members of the Neo-Scholastic Society in the past year was given in the Philosophers' number of the Echo published in April, and which contained some of the outstanding essays of the year. The importance of the work of the society may be readily seen since in this day and time there are many false philosophical doctrines being taught young students in many of the large universities and there is a crying need for men to represent and uphold the truth so that not only the truth but also religion will not suffer.

Among the papers read and discussed before the meetings of the society are: "The Aristotelian Theory of Matter and Form," by Thomas Young; "The Destiny of the Universe," by Tony Burger; "James-Lange Theory of the Emotions," by Rudolph Rosenbleuth; "Origin, Nature, and Destiny of the Universe," by Joseph Harper; "Influence of Ideas on Actions," by Luis Munoz; "The Ice Ages," by Loye Kossbiel.

HAROLD JANSING
President

THOMAS YOUNG
Vice-President

RANDOLPH PAPICH
Secretary

REV. CORNELIUS HAGERTY, *Ph. D.*
Moderator

Top: PAPICH, HOLGUIN.

Inner row: HOOPES, KOPECKY, MIMS, PANNELL, RANSOM, SULAK, VOGT.

Second row: HYZEDOS, KOSSBIEL, OCHOA, PARMA, RIVAS, SULLIVAN, WALLIN.

Third row: KASBERG, McCABE, R. O'ROURKE, PESSONEY, SLIVA, TREFFLICH, WATKINS.

Fourth row: KELLER, McCURDY, O'ROURKE, PITRE, J. STRAUSS, TURNER, E. YOUNG.

Outer row: KOEGLER, MUNOZ, OTT, RAFFALLI, R. STRAUSS, VANCE, FR. HAGERTY.



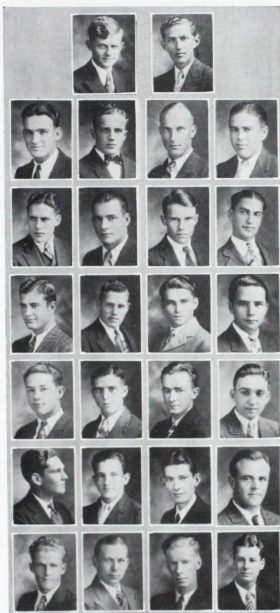
South Texas Club

This club, which was organized for the purpose of becoming more closely connected with and to promote the school spirit in the southern towns of Texas, was started on January 23, 1930. Immediately after organization, election of officers was held, and a constitution adopted.

The constitution of the South Texas Club limits its membership only to College students who reside on and south of a straight line drawn from the

City of Del Rio, to the City of Austin, thence to Chapel Hill Ferry on the Brazos river, and then following the Brazos river to the Gulf of Mexico. These boundaries give the Southerners the right of membership, and marks them off from other Texas clubs of the University.

The South Texans have entered all Intramural activities at St. Edward's. Although they entered the basketball race late, due to their late start in organizing, they nevertheless offered stiff competition, and proved to be a hard club to beat.



Outer row: BLACKWELL, PRESIDENT; P. BURKE; COWART; J. FINGER; S. JAMES; J. KIVLIN.

Second row: BARTA; BOMBA; MIKE BYRNE, SECRETARY; ESTES; GAULT; S. JOHNSON; KOPECKY.

Third row: BENAVIDIS; BOURKE; MORGAN BYRNE; FALTISEK; GOETZ; W. JOHNSON; KOSSBIEL.

Inner row: BROTHERMAN; CALIFA; J. FIN- GER; HINOJOSA; A. KIVLIN; H. LINN.

South Texas Club

(CONCLUDED)

They won the championship in the Playground baseball race, and at present are making a strong bid for honors in the baseball league.

Pins for the members have been selected. Meetings are held once a month, and entertainments are provided at each of these social gatherings held.

Although this club was late in organizing, its work on the campus is highly praised by the Faculty as well as the student body. A real fraternal spirit exists among its members, and much is expected of them in the line of propagating the school spirit.

It is the hope of each member to work faithfully this summer in promoting the interests of St. Edward's in the Texas towns of the South, and to bring back next year more members for the club as well as students for the University.



Inner row: MICEL; O'HAGAN; RIVAS; SCHMACHER; R. STRAUSS; VOGT.

Second row: McCABE; MIMS; PANNELL; C. ROBERTS; C. STRAUSS; SULAK; WALLIN.

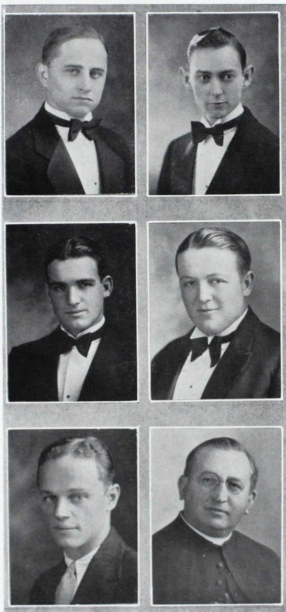
Third row: McCURDY; MUSSETT; POHLER; F. ROBERTS; G. STRAUSS; TREFFLICH; WEARDEN.

Outer row: OCHOA; RANSOM; RODRIQUEZ; J. STRAUSS; VAHCE; T. YOUNG, Vice-Pres.

Intercollegiate Debaters

Directed by Coach Elmore Borches and Dr. Foik, the St. Edward's debating teams of 1929-30 enjoyed an active season and closed the year with about an even score of victories and defeats. At this writing, the two teams have amassed three victories and three defeats, with one more debate yet on the schedule.

The season was opened by Sulak and Koepler, both third year men, against Simmons University. The St. Edward's team, upholding the negative of the complete disarmament question, lost by a 3 to 0 decision. In the next debates, Sulak and Koepler vindicated themselves by winning unanimous decisions from a team representing Baylor University, at Our Lady of the Lake College in San Antonio, and another from McMurry College in Austin.



Blackwell and Strauss, second and first year debaters respectively, opened their series by losing a 3 to 0 decision to South West Texas Teachers College, at San Marcos, on the negative side of the disarmament question. The team then took a unanimous decision from Howard Payne College on the same question. The next debate by this team, held at Georgetown, was decided by a single judge in favor of Southwestern University.

In the closing debate, St. Edward's was represented by Sulak and Koepler in Waxahachie against Trinity University. This was the only debate in which St. Edward's defended the affirmative side of the disarmament question.

Another debate to be held with Austin College was cancelled by the Sherman institution because of conflicting dates.

Cuter row: JOHN SULAK, ROLAND BLACKWELL,
COACH ELMORE BORCHES.
Inner row: JOE KOEPLER, GUS STRAUSS, DR.
FOIK.

Sorin Scholarship Society

The Sorin Scholarship Society, named in honor of Father Sorin, founder of St. Edward's University, is a chapter of The Scholarship Societies of The South. It has for its purpose the promotion of scholarship among the students in the academic division of the Colleges of the South. As membership can be obtained only through high scholarship it is considered one of the highest honors that can be conferred on a student of the University.

Only those Juniors or Seniors who have a scholastic average of at least 85 over five semesters of resident college work are eligible for membership. Each year one faculty member may be elected to this society.

Since its founding this chapter at St. Edward's has been very active.

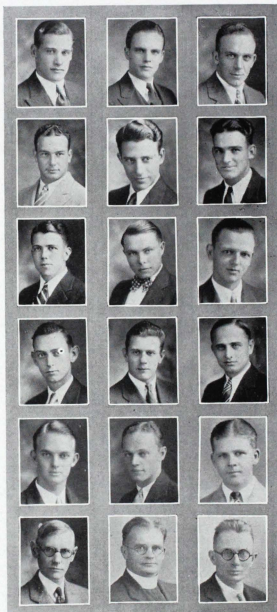
The chapter was represented by John Finn and Albert Loran in the annual convention for all chapters of the State of Texas held at Commerce, Texas, February 21 and 22.

JOHN DICKMANN
President

JOHN FINN
Vice-President

ALBERT LORAN
Secretary

RALPH WARNER
Treasurer



Inner row: DICKMANN, JANSING, C. DORSEY,
KOEGLER, TURNER, DR. HOFFMAN.

Middle row: FINN, WARNER, J. HARPER, OTT,
BORCHES, FR. QUINLAN.

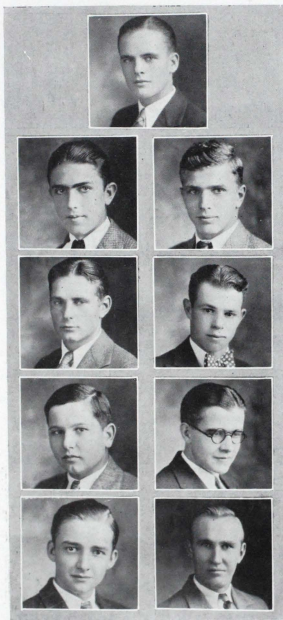
Outer row: LORAN, BLACKWELL, HOOPES,
SULAK, FETTE, SKEELER.

North Texas Club

Renewing its activity with the opening of school, The North Texas Club, composed of those members who reside within a hundred miles South of the Red river, continued its good work on the campus. Working with the zeal that made them so well known on the campus last year they have again retained their place as one of the outstanding Texas clubs of the University.

This club which was organized in 1928 has for its purpose the fostering of a fraternal spirit among the students in the University who live within the boundary lines defined by it. A secondary aim is the propagation of interest in St. Edward's among the young men of North Texas. Although it was the first club of its kind on the campus, the past school year '28-'29 it quickly gained recognition from the faculty as well as the student body, due to its ever active members.

As a result of their efforts in their part of the state many new students from North Texas were enrolled in the University at the beginning of this school year. The result of their primary purpose is easily seen around the campus from their unified efforts in all activities.



Top: JOHN FINN.
 Outer row: R. BEHLE, BIELKOWSKI, BUTLER,
 COLLINS.
 Inner row: J. BEHLE, BUSBY, COFFEY,
 DANGELMIER.

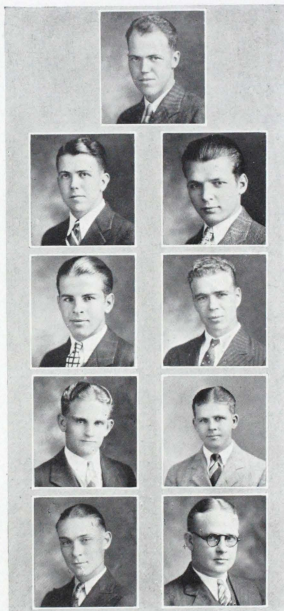
North Texas Club

(CONTINUED)

The first initiation held in the early part of the school year saw twenty-five new members brought into the club. Of this number many were new students, but several old students were also among the class. At the beginning of the second semester the club, eager to keep the club alive with new members, initiated another class but this time of only two candidates.

In order to keep in close connection with the faculty of the school, and to have the advice of someone more experienced, the club this year elected Rev. James J. O'Brien as its sponsor. By speaking occasionally at the meetings to the members and through conference with its officers the club is enabled to receive proper advice and supervision.

Another step taken by the club to insure its permanency was the selection of standard pins for the members. Members were requested to purchase and wear the pins selected. An attractive letterhead was made up and stationery for the club was purchased. Everything that could be done to make the club permanent was actualized by them.



Top: J. DORSEY.

Inner row: C. DORSEY; ENDRES; E. FETTE;
GANTOR.

Outer row: A. ENDRES; FARR; R. FETTE;
GULLET.

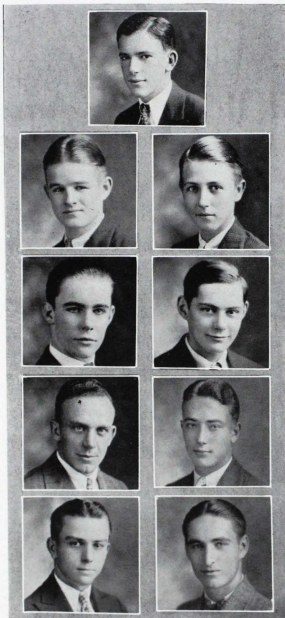
North Texas Club

(CONTINUED)

With the inauguration of the Intra-Mural leagues on the campus the North Texas Club was the first to enter. They have entered teams in each of the basketball and baseball tournaments. Their basketball team was among the best and they were a threat for the championship to their last game. In the Indoor Baseball league the club finished a close third. In the regular baseball league Captain Busby has led his men into a tie for first place. At present the team has several more games to play, and though they are not the favorites to win the league they intend being serious threats until the final gong. In the

Intra-mural track and field meet to be held later in the year the club intends to present another strong team. Though this is the first year of Intra-mural competition among the clubs, this club like the other Texas clubs is doing its best to perpetuate the leagues.

Regular club meetings are held twice a month and are always well attended. Here the regular business is discussed and plans laid for their own advancement. Each meeting is usually followed by some kind of entertainment for the benefit of the members. Regular dues besides the initiation fee are charged in order to help carry on the business of the club.



Top: McLEMORE.
 Outer row: HENDRICKS, KENNEDY, LORAN,
 McCUNE.
 Inner row: HIGGINS, KORIOTH, C. MARTIN,
 MOONEY.

North Texas Club

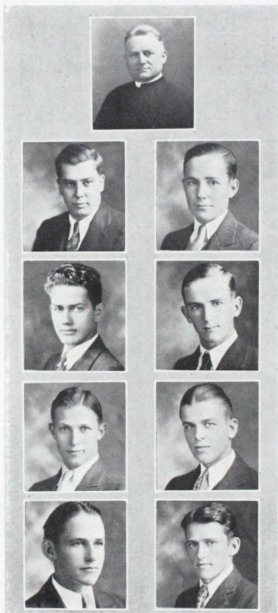
(CONCLUDED)

The premier social event of the year for the club was the dance given by them at the Driskill Hotel Ball Room. This was one of the two dances given by campus organizations during the year, and was also one of the best dances of the season. The dance committee composed of Marvin Farr, Joe Dorsey, Claude Martin, Chas. Dorsey, and John McLemore spared no trouble to make the dance a success. The dance was broadcast from the hotel over KUT, Austin's radio station. The club received much praise for their dance, and have set a precedent for other clubs to shoot at.

The financial condition in which the club is kept is a feature of its organization. Though only small fees are charged by the members for initiation and regular dues the club has always been in a paying position as is evidenced by their many activities. Close co-operation among the members enables them to undertake activities that would not otherwise be possible.

JOHN FINN.....*President*
 JOHN MCLEMORE.....*Vice-President*
 JOE DORSEY.....*Secretary*
 FR. O'BRIEN.....*Advisor*

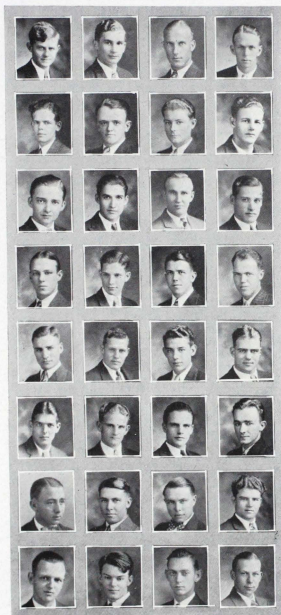
Top: JAMES J. O'BRIEN.
Inner row: J. MURPHY; J. ROBERTS; SEITZ;
 SWEENEY.
Outer row: RAFFAELLI; ROBERTSON;
 SCHULTZE; WATKINS.



Knights of Columbus Council 2559

The St. Edward's Knights of Columbus Council 2559 is one of the few student councils in the world. This council was granted its charter on December 14, 1924 and since that time it has been one of the most active councils in the state. In student activities it is also one of the liveliest organizations on the campus.

The council meets twice monthly at which time the business of the council is discussed and after which instructive and entertaining programs are held. This organization is known on the campus for the entertainment it offers its members at the meetings as well as the educational benefits received from it.



Each year at least one large group of candidates are initiated, and this year due to the zealous effort of the members two classes were initiated into the order. The first initiation was held in Austin, December 15, and the second in San Antonio on April 27. In both cases the first and second degrees of the order were bestowed by the St. Edward's Degree Team. On May 2, the council gave a dance honoring the newly initiated members.

The St. Edward's council is extremely fortunate in that St. Edward's is the home of the Texas Knights of Columbus Historical Commission.

Inner row: BRAMMER; CHAUVIN; DICKMANN; J. DORSEY; C. FANETTE; GOETZ; HERTENBERGER; KOPECKY.

Second row: R. BOURKE; CAPLIS; DANGELMEIR; C. DORSEY; B. FANETTE; FINN; J. HARPER; KOEGLER.

Third row: BLANCHETTE; BROWN; COOVER; W. DONOHUE; ESTES; E. FETTE; H. HARPER; KEAYS.

Outer row: BARTA; BRAUER; COLLINS; E. DONOHUE; DURAN; I. FANETTE; A. GUERRA; HOOPES.

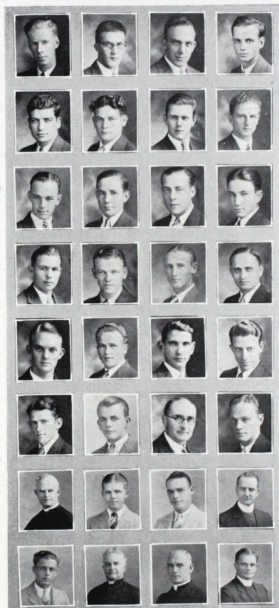
Knights of Columbus Council 2559

(CONCLUDED)

Dr. Paul J. Foik, C. S. C., Librarian of the University, is chairman of the Commission. Through his efforts the council is influenced to propagate the true spirit of Columbianism among its members to the edification of the other students on the campus.

Among the persons who lectured to the council this year are: Carlos Castanedo, Custodian of the Garcia Collection at the University of Texas; J. I. Driscoll, State Deputy; Rev. Dr. Foik, Chairman Historical Commission; Fr. O'Brien, Head of the Dept. of History at St. Edward's; and Charles J. Schneider of Austin. As a whole the council enjoyed a very active and successful year.

ED OTT
Grand Knight
IRWIN J. FANETTE
Deputy Grand Knight
JOHN SULAK
Financial Secretary
REMIGIUS FETTE
Chancellor
AL TURNER
Warden
RALPH WARNER
Recorder
JOE KOEGLER
Lecturer
LOUIS HERTENBERGER
Advocate
JOHN FINN
Treasurer
JOHN BARTA
Inside Guard
AL LORAN
Outside Guard
ELMORE BORCHES
Trustee
FR. LEO HEISER
Trustee
JOE KOEGLER
Trustee



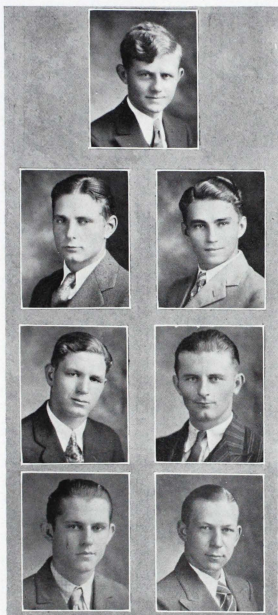
Inner row: KOSSBIEL; MIMS; PITRE; SCHUMACHER; TURNER; WATKINS; FR. BURKE; J. JAMES.
Second row: LEE; MUNOZ; RAFFAELLI; C. STRAUSS; VANCE; T. YOUNG; R. FETTE; FR. MAGUIRE.
Third row: LORAN; OTT; F. ROBERTS; R. STRAUSS; S. VILLERREAL; BIETER; HANNAN; FR. O'DONNELL.
Outer row: MCLEAN; PESSONEY; SAMANIEGO; SULAK; WARNER; BORCHES; FR. HEISER; FR. QUINLAN.

Czech Club

A new and very active organization took form early in the school year with the founding of the Czech Club, composed of those students who are of a Bohemian or Polish nationality. It has for its purpose to create a more lively and enthusiastic interest in the Czech language, and to promote the interests of the University in the various Bohemian localities of Texas. It is hoped by the members, that this club may gain Statewide publicity in order that more Czech students will come to St. Edward's.

With no precedent as a guide for their proceedings the club snapped into action in the very opening weeks of school. Officers for the club were elected, and a Constitution was adopted. Dues were assessed, and with them, social gatherings were held.

With the intention of having a Bohemian class started at the University, the Czechs worked with earnest zeal with this point in view. Receiving donations from different societies and good-hearted people for this purpose, these dreams were accomplished when a class was started at the beginning of the second semester with the Rev. Paul Kasper of Plum, as professor. It is the hope of the club that this class will continue in the University, and that next year a Bohemian professor will be acquired for this purpose. These classes are being held twice a week, and are attended fully by the members.



Top: JOHN BARTA, PRESIDENT.
 Outer row: BIELKOWSKI; GAIDA; KMIEC.
 Inner row: FALTISEK; HVZEDOS; KOPECKY.

Czech Club

(CONCLUDED)

The club meetings are held on the first and third Monday of the month, and are attended by all the members. Combined with the regular business, a social function is also given. These meetings are conducted in such a manner as to furnish entertainment in themselves.

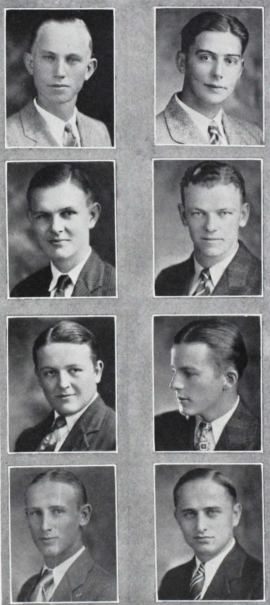
The Czechs were represented in all of the Intra-mural activities. New suits were bought for basket-ball, and the club made a strong bid for the championship of the league. At the close of the season the Czech team made a trip to Hallettsville, in order to administer the activities of the club in that locality.

At the time of this writing, the club intends to have a picnic at the end of the year. Plans are also being made to have a dance, with the Czechs of Texas University.

Bohemian newspapers were subscribed for, and are at the disposal of the club. Articles about the club are sent to the Bohemian papers often.

The activities of the club, under the direction of Brother Peter, have received hearty approval of the faculty and the student body. It is the hopes of the members of this club, that their work in organizing it may be rewarded, by having a great increase in members next year.

At the end of the year the club intends to give a present to its members who are graduating.

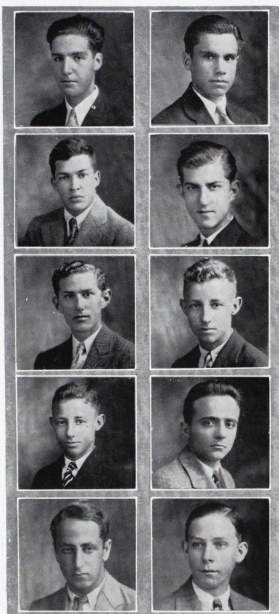


Inner row: MARIK; STAVINOHA; G. STRAUSS;
R. STRAUSS.

Outer row: SLIVA; C. STRAUSS; J. STRAUSS;
SULAK.

Spanish Club

The Spanish Club organized in 1928 was originally an organization composed of members of Spanish descent. This year in order to broaden their activities they decided to invite as members any student who had a conversational knowledge of Spanish. This step brought in several members who could not otherwise have joined. The purpose of the club is to enable its members to acquire a facility in the use of Spanish, and to bring into close connection the Spanish speaking students of the school. Although they have not been as active this year in the line of dramatics as they have formerly been they have taken a big part in the other campus activities.



Under the guidance of Fr. O'Donnell who has served as faculty advisor the club has sustained a very co-operative spirit. Manuel Ochoa, the president of the club, is responsible for the interesting and entertaining meetings that have been characteristic of the club this year. Regular meetings were held each month for the benefit of the members.

*Outer row: OCHOA, E. VILLARREAL, C. BENAVIDES, R. DEHARO, DUQUE.
Inner row: HOLGUIN, A. BENAVIDES, A. DEHARO, DOW, EMMLEINZ.*

Spanish Club

(CONCLUDED)

In the different Intra-mural leagues the Spanish club has organized representative teams. In basketball and baseball the club boasted of unusually strong aggregations. In the basketball league the club finished a close second and were always a threat for the championship. In baseball the Spanish club team is composed of some of the best ball players on the campus. Though the season is not finished yet their team is battling with the leaders for the championship.

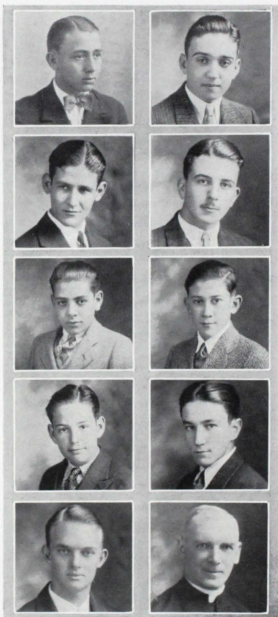
Most of the members of the club this year expect to return to school next year and a banner year is expected the coming season.

MANUEL OCHOA
President

MACLOVIO HOLGUIN
Treasurer

EDMUNDO VILLARREAL
Secretary

REV. WALTER J. O'DONNELL
Advocate

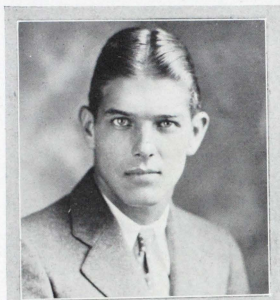


Inner row: A. GUERRA, D. LONGORIA, PONS,
PUGO, TURNER.

Outer row: HINOJOSA, MADERO, PRATT, SAM-
ANIEGO, FR. O'DONNELL.

The 1930 Tower

With the ambition to maintain or surpass the standard set by the previous annuals at St. Edward's the 1930 Tower staff began at the first of this school year to build a book which would achieve this goal. We have used as a theme one which at the present day is most prominent in the world of progress. We have portrayed five famous flights as representative of the advancement that aviation has made since its first crude beginning. The art on the Division pages were taken from drawings by Frank Lemon for the Wright Aeronautical Corp., whose permission we secured before using them. Every effort has been made to produce a book which is truly representative of life at St. Edward's.



IRWIN J. FANETTE
Editor-in-Chief



RALPH J. WARNER
Business Manager

The 1930 Tower

The staff, which has a representative from every class in the University, has co-operated heartily in the building of this annual. The success of this annual is due largely to the co-operative spirit of the staff. Others who were not official members of the staff have also lent their assistance to the staff. For this help we wish to express our appreciation.

The engraving was done by The Service Engraving Co., San Antonio; the printing by the E. L. Steck Co., Austin; and the photography by The Elliotts, Austin.

JOHN FINN
Athletics



LEON C. KOPECKY
Organizations

LOUIS L. HERTENBERGER
Advertising



MIKE J. BYRNE
Advertising

JOHN E. BARTA
Features



JOHN J. DICKMANN
Circulation

RANDOLPH G. PAPICH
Advertising



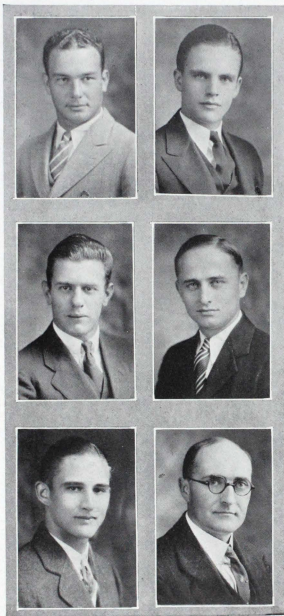
MARK DONOVAN
Art

C. D. BLANCHETTE
Prep School



The Echo

The University newspaper titled The Echo is published twice monthly by the Journalism students under the direction of a faculty advisor. It serves as a laboratory whereby the Journalism students are given a chance to acquire practical experience. The Echo is a charter member of the National Scholastic Press Association besides keeping personal exchange relations with other College newspapers through this section. Its contents is composed chiefly of news of scholastic and campus activities of interest to the students and friends of the University.



Two literary editions, one of philosophy, and the other of essays and poetry, are published yearly whereby students outside the Journalism school are given a chance to show their ability along these two lines.

Student Reporters are: Brotherman, Hoopes, Keller, J. Strauss, Raffaelli, and R. Strauss. Copy Readers are: Koezler, Sulak, and Turner.

HAROLD JANSING
Editor-in-Chief

JOHN FINN
Managing Editor

ED. OTT
Advertising Manager

JOHN SULAK
Exchange Editor

WALTER BEACH
Circulation Manager

A. J. BIETER
Faculty Advisor

*Outer row: JANSING; OTT; BEACH.
Inner row: FINN; SULAK; A. J. BIETER.*

St. John Berchman's Society

The St. John Berchman's Society, which was organized a few years ago by Father Foik, has proved itself to be one of the best organizations on the campus. Its purpose is to train the young men belonging to the society the art of serving the celebrant at various religious ceremonies.

Although somewhat inactive after its beginning, this society has snapped into action the last two years, under the careful guidance and direction of Father Pieper, who is director of the society. He has placed into the minds of the members the necessity of serving the celebrant at religious services.

Meetings for the society are held each Sunday after High Mass at which it is decided who shall have the privilege of serving during the following week. Short lectures by Fathers Pieper and McNamara concerning the proper serving for various ceremonies comprise a part of each meeting.

FRANK HERRON
President

FRANCIS COOVER
Vice-President

JOHN MCLEMORE
Secretary-Treasurer

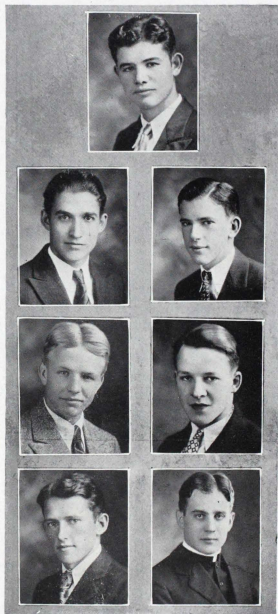
ED FOLEY
Sargeant-at-Arms

FATHER PIEPER
Director

JAMES WATKINS
Committeeman

FRANK WALSH
Committeeman

Top: HERRON,
Inner row: COOVER; FOLEY; WATKINS.
Outer row: MCLEMORE; WALSH; FATHER
PIEPER.



St. John Berchman's Society

(CONCLUDED)

Besides assisting the celebrant at religious services the members of this society are also participants in all Intramural activities. They presented a strong team in basket-ball competition and were runners-up for championship honors. They also entered the Playground base ball race and proved to be a hard team to beat. At present they are presenting a serious threat in baseball.

By giving its members a direct knowledge of the procedure at religious services this society is furnishing an adequate background to students for their courses in morals, which is very essential, and which St. Edward's is striving to teach to its pupils. Credit must be given to these young men for their services in the religious field.



Top row, left to right: RACE, LEONARD, HEITCAMP, WALSH, KELLER, TURNOCK, GAIDA, LEYEN-DECKER.

Second row, left to right: SWEENEY, MCLEMORE, FINNEGAN, COOVER, R. BEHLE, J. BEHLE, CON-
DON, BUTLER, PRATT.

Third row, left to right: R. DEHARO, A. DEHARO, THORNTON, FOLEY, ROOT, RILEY, MUELLER,
A. BROWN.

Bottom row, left to right: KLEIN, HOELSCHER, MURPHY, HAMILTON, WATKINS, GOETZ, ROBERT-
SON, MANNING, GALLOWAY.



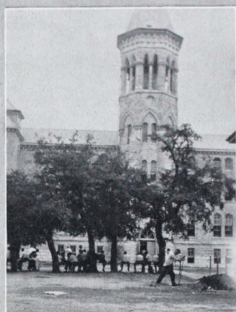
Features



Highlights of the Year

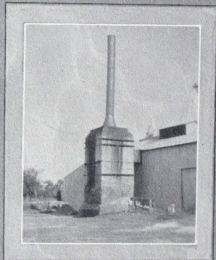
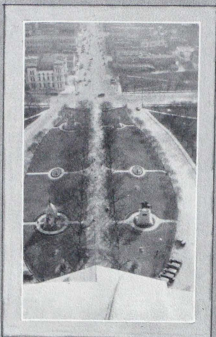
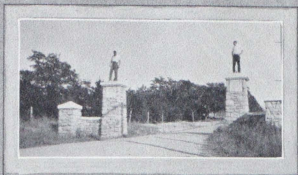
- September 3—Football practice begins.
16—Banquet for football squad given by Austin business men.
17—Registration Day.
18—Classes begin at noon.
21—Night game at New Orleans. Loyola 18, St. Ed's 0.
27—Freshman bonfire and Pep rally before Texas game.
28—Fighting Saints hold Texas 13-0.
29—Finn and Pessoney date out for a boat ride on Lake Austin.
- October 10—Student talent given a showing at S. A. C. student meeting.
12—Saints hold highly touted Baylor Bears to 19-0.
13—St. Edward's Day.
18—Pep rally and bonfire for Pirate game.
19—Saints decisively trounce Southwestern 38-6.
22—Knights of Columbus Historical Commission meets at St. Ed's.
25—Dope bucket upset when Daniel Baker holds Saints 0-0.
- November 2—Saints beat hard fighting Rice Owls 20-7.
11—Armistice Day. Howard Payne defeats Saints 21-7.
15—Saints outfight Trinity to win 7-2.
19—Dramatic club presents four one-act plays.
22—Saints defeat Simmons 13-0.
28—Thanksgiving Day.
30—Texas School of Mines holds St. Edward's 0-0.
- December 7—St. Edward's 6, Austin College 0.
11—"Campused Collegians," a modern minstrel, sponsored by S.A.C.
13—Freshman Dance at Stephen F. Austin roof.
15—Knights of Columbus initiation and banquet.
21—Christmas holidays begin.
- January 3—Classes resumed.
8—Intra-mural basketball league begins. Weasel returns.
17—Sophomore Dance at Stephen F. Austin Hotel.
- February 7—North Texas Club Dance at Driskill Hotel.
10—"One-Eye Conrally" Loran makes spectacular entrance and exit at dance; via. window.
21—Washington Birthday Celebration.
28—Junior Prom at Austin Country Club.
- March 3—St. Edward's Dramatic Club presents "The Rivals."
5—Ash-Wednesday. Lent begins.
12—Holy Cross Provincial arrives for visit.
16—Tom Estes host to Senior class at dinner.
28—Superior General, Holy Cross Order, visits St. Ed's.
- April 1—Jansing gives party.
17—Easter holidays begin.
22—Classes resumed.
27—St. Edward's K. of C. candidates initiated at San Antonio.
- May 2—Knights of Columbus Barn Dance.
8—Texas Conference Track Meet.
19—Senior Exam week.
23—Sixth Annual Senior Ball.
25—University Commencement Exercises. Toodle Ooo.





FISH BUILD BONFIRE
FIRE! FIRE! FIRE!
FATHER QUINLAN STRUTS HIS STUFF
THE PASS

SHACKVILLE
THE TOWER
THE WHITE WAY



"LEIDERMAN" BARTA
LIZZIE'S ROW

GATEWAY TO FREEDOM
THE CAPITOL GROUNDS
THE OPEN DOOR

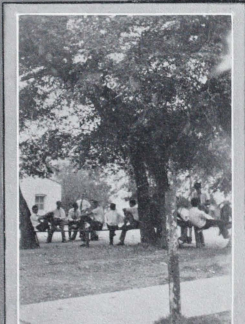
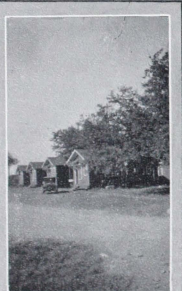
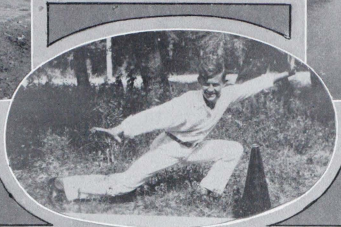
SISSY ESTES
TURN ON THE HEAT



A STUDY IN MATH
"JOHN GILBERT"
THE WEASEL SMILES

EGG SARAFINY
BUDDIES
THE BOY WONDERS

PSYCHOLOGICALLY SPEAKING—
BIG PAPA JANSING
BEAUMONT ESKIMOS



BOMBA DRAINS THE CUP TO
ITS DREGS
THE FISH LEND A HAND ON
THE BONFIRE
THE SHACKS

SCRIMMAGE IN ST. ED'S
STADIUM
BARTA STRUTS HIS STUFF
STUDY HALL TURNS OUT

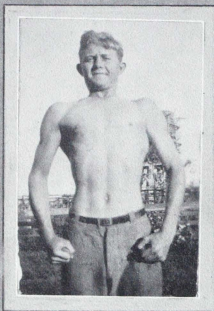
A MUCH TRAVELED ROAD
THE FOOTBALL TEAM LEAVES
FOR BROWNWOOD
A FAMILIAR SPOT AROUND
THE CANDY STORE



COACHES SARAFINY AND JAMES
GET A WORKOUT IN ENGLISH
THE FOOTBALL SQUAD FOSES
THE GATE DRESSED IN WHITE

THAT IRISH SMILE
MAGAZINE HOUR IN SHACK FIVE
- CAPONE AND MONKEY FIGARI STICK-UP PRUNY
JANSING BOOTS AN EXTRA POINT AGAINST SOUTHWESTERN

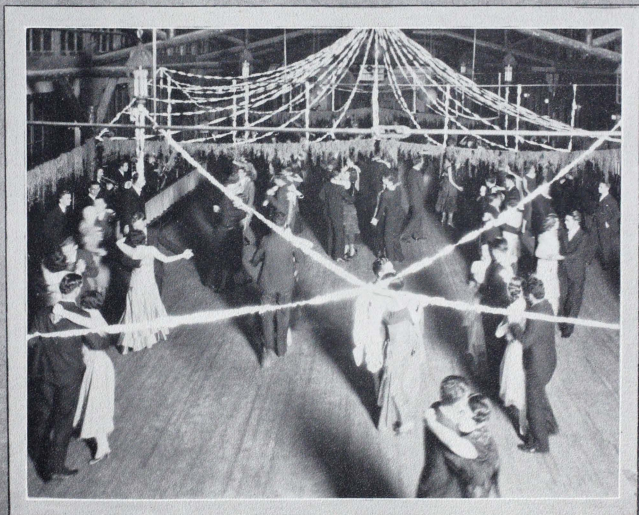
BARTA AND HARPER
TUMBLING AROUND



JESSE TAKES HIS BEAUTY NAP
DAVE GIVES DEL RIO A SHOW
DOES ANYONE WANT TO PLAY WITH WELDON?

BILL AND HIS FANS
DEVELOP YOUR CHEST IN TWO LESSONS
THE RESULT OF A "STRIP" POKER GAME

YOU'RE IT
DRAMA AS SHE AM ACTED



TWO BIG STRUGGLES OF THE YEAR
SAINTS DEFEAT SOUTHWESTERN
THE SOPHOMORE DANCE



AUSTIN'S GREAT WHITE WAY



With one beat of his wing, Charles Lindbergh goes to Paris! 1927

ATHLETICS

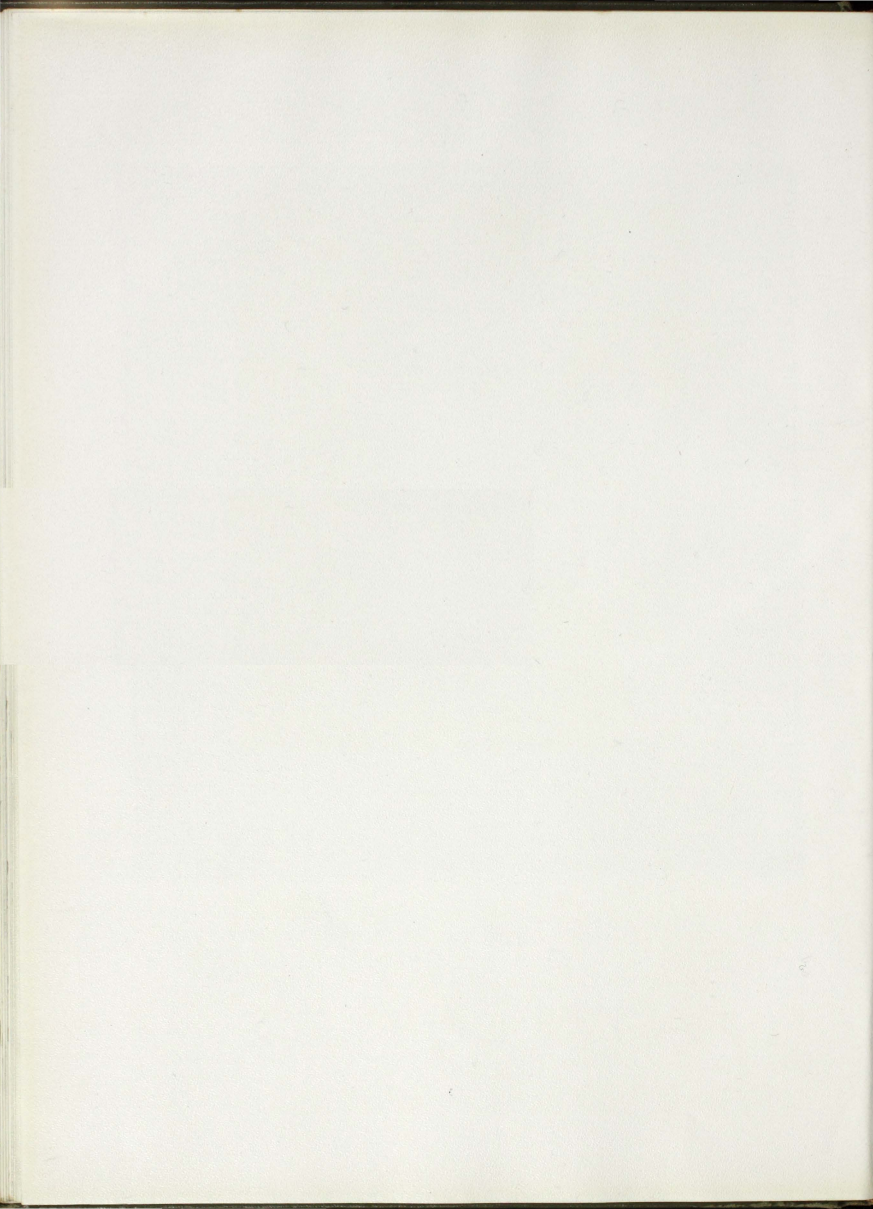


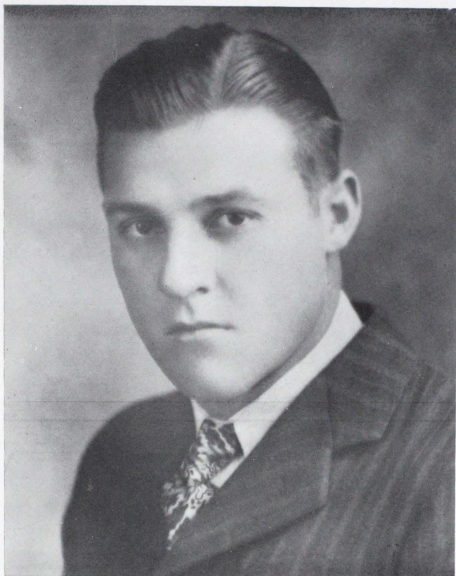
AUSTIN'S GREAT WHITE WAY



With one beat of his wing, Charles Lindbergh goes to Paris! 1927

ATHLETICS

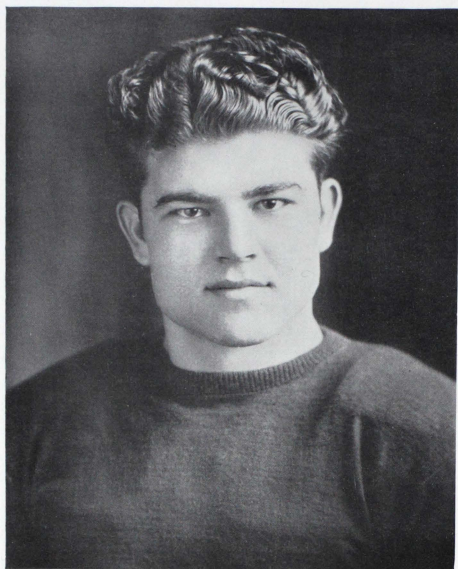




COACH AL SARAFINY
Director of Athletics

The 1929 football season at St. Edward's witnessed a complete change in the coaching staff. Coach Jack Meagher, who resigned to accept a position as head football coach at Rice Institute, was replaced by Al Sarafiny. Sarafiny, a product of St. Edward's and Jack Meagher, was selected as Saint mentor after a most brilliant record as gridster and student. Curley James and Dan Hannan, two of Sarafiny's classmates, were chosen to assist him.

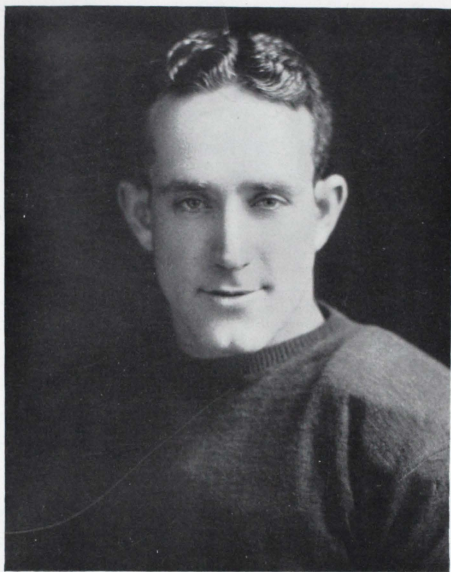
Sarafiny's first aggregation will always be remembered as one of the hardest fighting Saint machines ever assembled at the University. This team was not only a team which won a good porportion of the games played, but one which featured every tilt with a brilliant offensive attack and never failed to play heads up football.



CO-CAPTAIN LOUIS HERTENBERGER
Guard

SEASON'S RECORD

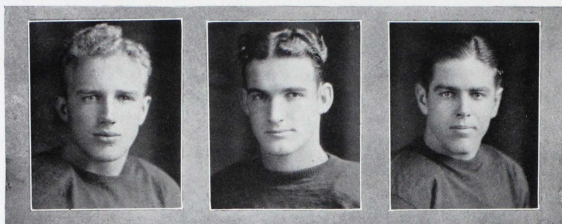
St. Edward's.....	0	Loyola.....	18
St. Edward's.....	0	University of Texas.....	13
St. Edward's.....	0	Baylor University.....	19
St. Edward's.....	38	Southwestern.....	6
St. Edward's.....	0	Daniel Baker.....	0
St. Edward's.....	20	Rice Institute.....	7
St. Edward's.....	7	Howard Payne.....	21
St. Edward's.....	7	Trinity University.....	2
St. Edward's.....	13	Simmons University.....	0
St. Edward's.....	0	Texas School of Mines.....	0
St. Edward's.....	6	Austin College.....	0



CO-CAPTAIN DAVE FIGARI
Halfback

TEXAS CONFERENCE STANDING

Howard Payne.....	1.000
St. Edward's.....	.750
Austin College.....	.500
Simmons.....	.333
Southwestern.....	.250
Trinity.....	.167



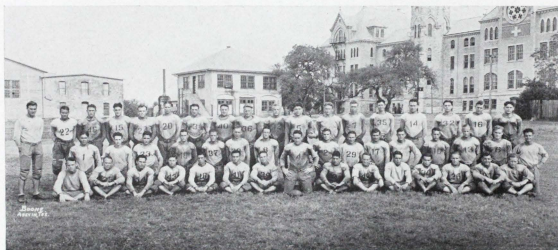
BOMBA
Fullback

CO-CAPT. ELECT BLACKWELL
Tackle

BROTHERMAN
End

The season was ushered in with Sarafiny's Saints battling the vaunted Loyola Wolves on the Pack's home field in New Orleans' first night game. Although fighting every minute the Blue and Gold warriors were defeated by the highly effective aerial attack of the Wolves 18 to 0. The New Orleans sport scribes were unanimous in their praises of the well coached Saint eleven and were enthusiastic about the work of Fanette, Frisch, and Hertenberger.

Although the Saints again tasted defeat in their fray with the University of Texas they demonstrated a brilliant offensive as well as defensive game. A sweltering Texas sun combined with the great reserve strength of Littlefield's squad was more than Hilltoppers could cope with and they lost 13 to 0. The Longhorns garnered but nine first downs after using everything they had in the way of attack and practically every man on the squad.

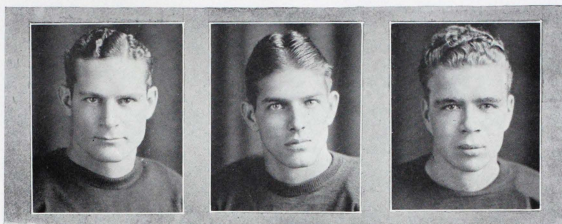


Top row: COACH SARAFINY, CANION, KELSEY, BLACKWELL, A. KIVLIN, McLAUGHLIN, VOGT, STRAUSS, MACKI, BOMBA, HERTENBERGER, VANCE, FARR, O'HAGAN, JANSING, SLIVA, ESTES, MUNOZ.

Second row: BROTHERMAN, JOHN FINGER, W. O'ROURKE, CAPLIS, K. KIVLIN, WURTZINGER, RANSOM, PARMA, FITZGIBBON, BURGER, ROUGEUX, SCOTT, BOURKE, FRISCH, ASS'T. COACH J. JAMES.

Bottom row: ASS'T. COACH HANNAN, QUEBEDEAUX, DEFFERARI, MESQUITA, GAULT, McCUNE, DONAHUE, FIGARI, FANETTE, McELROY, JOE FINGER, TALERICO, TATE, COWART, SULLIVAN.

TOWER



CAPLIS
Guard

FANETTE
Quarterback

FARR
Center

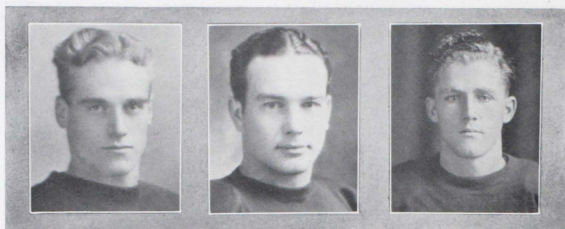
The following week-end a crippled Varsity eleven was again the victim of greater reserve strength when the Saint team fell before the touted Baylor Bears to the tune of 19 to 0. The Bears, led by the flashy Jake Wilson, played one of their best games of the season, but were forced to their limit in downing their lighter opponents who held them scoreless during the first period of the game. In speaking of the game Morley Jennings said that Sarafiny had the hardest driving backfield of any team his men played during the entire season. The Baylor mentor referred especially to the line plunging of Bomba and Macki.

An inspired Blue and Gold grid machine celebrated Homecoming Day, Oct. 19, in Memorial Stadium, by running wild over the Southwestern University Pirates and plastering a 38 to 6 defeat on their ancient rivals. The Saints cut loose early in the fracas with terrific drive and brilliant all-around play that the Corsairs were never able to stem. For the fourth time in as many years the



JUST BEFORE FRISCH STOPPED BEULAR IN LONGHORN GAME





FRISCH
End

JANSING
Halfback

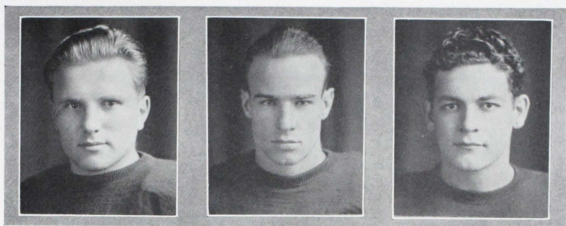
KIVLIN
Quarterback

Saints proved their superiority over the Pirate crew in every department of the game. Jansing and Parma reeled off the most sensational runs for the Saint offense while Allen proved himself a star for the opposition. Southwestern's lone counter came during the third quarter after Sarafiny had replaced his entire Varsity with reserves.

The Daniel Baker Hill Billies upset every dope bucket in the state when they held the fighting Saints to a scoreless tie, Oct. 25, in Brownwood. The St. Ed's gridsters completely outclassed the Brownwood aggregation in number of first downs and gained 220 yards from scrimmage to their opponents' 128 but lacked the necessary punch when it was needed. In holding Sarafiny's scoring Saints to a scoreless tie the Hill Billy team displayed a great brand of football and were justly lauded by sport writers. As usual the stalwart forward wall, headed by Hertenberger and Vogt, functioned perfectly.



JANSING SKIRTS PIRATE END FOR GAIN



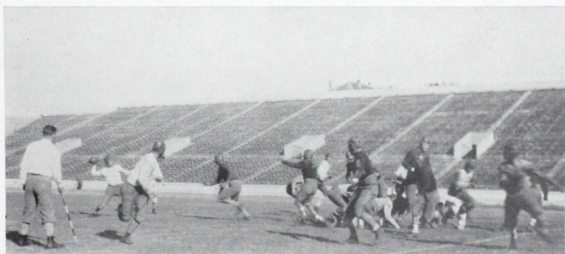
MACKI
Fullback

MCLAUGHLIN
End

MUNOZ
Guard

Followed to Houston by practically the entire student body a scintillating galaxy of Sarafiny's stars trampled the Rice Owls by a score of 20 to 7. Although Meagher's Feathered Tribe put up a fierce fight they proved no match for the powerful Saint offensive led by Jansing. The great half, for the second time in as many years, ripped the Owl forward wall wide open in pile driving fashion. It was only an ever fighting Meagher team and the spectacular playing of Bush Jones, Rice guard and All Southwest Conference selection, that prevented the Saints from piling up a larger score.

All hopes for the Texas Conference gonfalon went haywire on Armistice Day when a fighting swarm of Howard Payne Yellow Jackets dealt the Saints the stinging defeat of 21 to 7. The big guns of the Blue and Gold opened up early in the game but were soon silenced by a Jacket team inspired by a huge Homecoming Day crowd. Bang up football was exhibited by both teams but the Jackets held the edge throughout most of the game.



FANETTE PASSES TO VANCE IN AUSTIN COLLEGE GAME



CO-CAPT. ELECT PARMA
Halfback

RANSOM
Halfback

ROUGEAUX
Guard

In a game marred by frequent fumbles a rather off-form Saint eleven boosted itself in Conference standing by defeating the Trinity University Tigers 7 to 2. Playing in Trinity's territory, the greater part of the game, the Saints made repeated marches on the Tiger goal but fumbled almost every time after approaching under the shadow of the goal posts. The Hilltopper gains came after Farr, Hertenberger, and Frisch, Saint linemen deluxe, had opened gaping holes in the Trinity forward wall.

Ransom started the St. Ed's-Simmons grid classic off right by snatching the opening kickoff and racing 95 yards through the entire Cowboy team for the first Saint marker. Again in the last minute of the tilt, Figari, elusive Saint co-captain, grabbed a punt and plowed through the Cowhands for another touchdown which netted the Sarafinians a 13 to 0 victory. The West Texans put up a scrapping offense but the Saint secondary defense was impregnable to all that the Cowboys could muster.



FIGARI OUTFRONS THE SOUTHWESTERN PIRATES



VANCE
End

VOGT
End

Cheered on by the largest football crowd ever assembled in El Paso the Texas School of Mines eleven made sensational football history by holding Sarafiny's Fighting Saints to a scoreless draw. The game turned out to be a see-saw affair throughout with neither team being able to break the deadlock.

The fact that scores do not indicate the superiority of a team was well demonstrated when the St. Ed's Saints downed Austin College by only a 6 to 0 count. Playing their last game of college football Saint grid performers, Jansing, Hertenberger, Vogt, and Fanette, played in a positively brilliant fashion. These luminaries, closely followed by their teammates, gained more than 300 yards from scrimmage as compared to 44 yards by the Kangaroos and made twenty first downs to three for the Sherman team. Sarafiny's savage forward wall easily held the Kangaroo aggregation under control through the entire tilt and never once let them threaten the Saint goal.



SAINTS BLOCK FOR PARMA IN AUSTIN COLLEGE FRACAS



JULIUS "CURLEY" JAMES
Basketball Coach

SEASON'S RECORD

St. Edward's.....	17	S. W. T. S. T. C.....	34
St. Edward's.....	19	S. W. T. S. T. C.....	37
St. Edward's.....	29	Southwestern.....	39
St. Edward's.....	29	Austin College.....	33
St. Edward's.....	36	Trinity.....	23
St. Edward's.....	43	Howard Payne.....	44
St. Edward's.....	36	Joseph's Man Shop.....	14
St. Edward's.....	20	Simmons.....	35
St. Edward's.....	20	Trinity.....	24
St. Edward's.....	37	Austin College.....	39
St. Edward's.....	25	Joseph's Man Shop.....	12
St. Edward's.....	20	Southwestern.....	38
St. Edward's.....	23	Simmons.....	36
St. Edward's.....	33	Howard Payne.....	36



CAPTAIN EUGENE SULLIVAN
Guard

To Julius "Curley" James, St. Edward's graduate and stellar all-around athlete, was assigned the task of moulding the 1930 basketball machine. The herculean problem that confronted Coach James was the replacement of Captain W. James, O'Brien, and Jansing, forward, guard, and center, respectively, on the 1929 Saint quintet. The last two men mentioned were All Texas Conference selections for their positions and who with Captain James formed the backbone of the 1929 team. James and O'Brien were lost by graduation and Jansing was unable to play due to an operation.

Everything considered Coach James demonstrated that he was well qualified as a basketball mentor. Although pitted against the best teams the Conference has ever boasted of and each composed of veterans the Jamesmen never failed



BURKE
Center

DICKMANN
Center

FITZGIBBONS
Forward

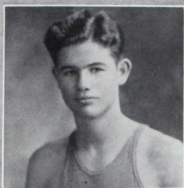
to play a fighting brand of basketball. The result of each game of the season was always doubtful until the sound of the final whistle as the Saints led at the half in every game with the exception of the first game with the San Marcos Bobcats and the Southwestern game of January 24.

Captain Eugene Sullivan proved himself one of the mainstays of the scrappy little James coached quintet. With two years of experience behind him Sullivan showed himself one of the most consistent guards in the circuit and was largely responsible for holding down the score in numerous games. The ever brilliant work of Captain-elect Herron, Saint scoring ace, earned him a place on the mythical All-Texas Conference team at one of the forward posts. Dickmann, playing his last year for the Saints, featured every game with a flashy game at

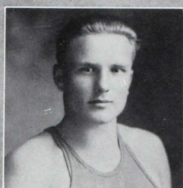


Top row: MICEL, A. KIVLIN, BEACH, COWART, DICKMANN, T. BURKE, JAMES (COACH).

Bottom row: HERRON, FIGARI, FITZGIBBONS, SULLIVAN, MACKI, K. KIVLIN, MUNOZ.



CAPT. ELECT HERRON
Forward



MACKI
Guard

center. Coach James is due much credit for the great development that Macki, Fitzgibbons, and Burke showed under his tutelage. Of these three men, Macki and Fitzgibbons were freshmen, while it was Burke's initial year on the basketball squad. Coach James, developed Fitzgibbons into a star goal tosser who led in the number of points scored in each game, and early in the season uncovered great ability in Macki. This husky guard proved the stumbling block for numerous onslaughts on the Saint basket. Burke displayed marked improvement, both as a floor man and as a goal shooter, throughout the entire season, and should prove valuable to the Saint quintet of 1931. The work of Micel, Kivlin, Munoz, Wurtzinger, and Beach deserves mention as these men kept the regulars fighting all the time to retain their berths on the Varsity line-up.



THE SAINTS EXECUTE A FAST PLAY



JIM SHEFFIELD
Baseball Coach 1929

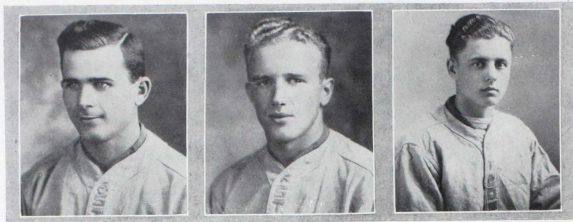
1929 SEASON'S RECORD

OPPONENT:	ST. EDWARD'S		
	P.	W.	L.
Baylor.....	2	0	2
S. W. T. S. T.....	4	2	2
Daniel Baker.....	4	3	1
Texas Tech.....	2	2	0
Fredericksburg.....	2	1	1
Yoakum, S. P.....	2	0	2
Austin Street R. R.....	1	1	0
Austin Greyhounds.....	2	2	0
Totals.....	19	11	8



SAMMY DYER
Baseball Captain

Jim Sheffield, St. Edward's baseball coach of several years ago, was again engaged to coach the 1929 Saint Varsity baseball nine. The fact that at the end of probably the most strenuous season a St. Ed's team ever had the Saints had a percentage of .579 in the won and lost column shows that Sheffield had lost none of his ability to produce fast hard-hitting baseball aggregations. Captain Dyer contributed much toward the success of the season with his superb brand of hurling which netted him a contract with the St. Louis Cardinals. Jansing, giant center fielder, led his teammates in slugging with an almost .500 percent batting average. Taken as a whole the Saints enjoyed an unusually successful season, displaying great ball playing in practically every game.



BURGER
Third Base

BOMBA
Catcher

J. JAMES
Shortstop

The 1929 season was featured by games with the best teams in the state. Coach Sheffield made it a point to schedule games with only the most outstanding teams in collegiate and semi-pro circles. Teams were not played that did not have a good record of wins. The Saint pitching staff was acknowledged as being one of the best that any college in the south could boast of. The leading pitchers were Captain Dyer, Anders, Scott, Beach, and McDonald. The great work of these stellar moundsmen combined with the good fielding and slugging of their teammates resulted in one of the best baseball seasons a Saint nine has had in the last several years. Of this team Captain Dyer and the James brothers were lost by graduation while Scott, Anders, and McDonald failed to return to the University.

1930 Squad



Top row: MICEL, JOE FINGER, PARMA, FIGARI, C. STRAUSS, FITZGIBBONS, JOHN FINGER, RIVAS, JAMES (COACH).

Bottom row: BURGER, KIVLIN, NESTER, BROTHERMAN, LORAN, BEACH, BOMBA, O'LAUGHLIN, JANSING.



W. JAMES
First Base

JANSING
Outfield

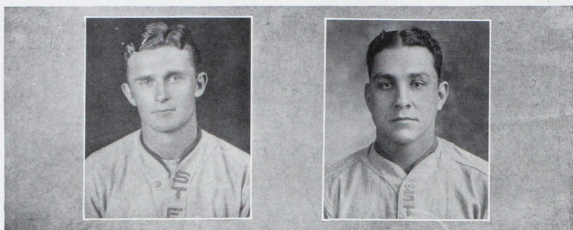
LORAN
Outfield

For the 1930 baseball season Julius "Curley" James was chosen to coach the Varsity baseball aggregation. With his four years of Varsity experience Coach James was well qualified to replace Sheffield. During his four years of participation in college athletics Curley James always proved himself an important cog in every Saint baseball machine. He was always a flashy infielder and his consistency in hitting was hard to beat.

It fell to the lot of Coach James to replace such baseball players as Captain Dyer, W. James, Anders, and Scott and to work in his freshmen material to the best possible advantage. It became apparent early in the year that his best bet among the yearlings would be Pat McLaughlin. This tall lanky youngster has everything it takes to make a big league hurler and the work he has turned in for the Hilltoppers so far has been positively brilliant. Among the other newcomers Fitzgibbon seems the most outstanding at this writing. Coach



FITZ GETS PARMA IN A SLIDE AT THIRD



PARMA
Shortstop

RIVAS
Second Base

James entrusted the third sack to him in the first several games and he has handled it in a very creditable fashion. Another freshman who showed up well from the beginning of the season was Micel who has been holding down the right field post like a veteran. These three freshmen besides being good at their positions are also timely hitters, delivering when hits mean runs. Jansing, veteran of three seasons seemed destined to turn in the most brilliant work of his entire collegiate career. Jansing, by virtue of his superb fielding and slugging, has cut himself a permanent niche in the St. Ed's athletic hall of fame. Jansing has been ably assisted in patrolling the outer gardens by Loran. During his four years at the University Loran has become a permanent fixture on Saint ball teams and his loss will be sorely felt by Coach James next year. Another



JANSING GIVING ROOKIE SLUGGERS A LESSON



STRAUSS GETS HIS MAN AT FIRST

man that Coach James will lose by graduation this year is Burger. Burger will end his two years of baseball at St. Edward's with the record of being one of the most clever men that ever graced a Saint infield position and with a great batting average. Brotherman will also end his college baseball career this year after alternately playing first and catcher equally well for the Saints during the last several seasons. Bomba should also see plenty of action behind the plate this year from his early season showing. At present the initial sack is being presided over by Brammer and C. Strauss. The care of the keystone bag is in the capable hands of Parma, flashy veteran of two seasons.

At this writing Coach James is greatly handicapped by the lack of games, due to the temporary abolition of baseball from the Texas Conference.



TONY AND DAN IN A FAST DOUBLE

Track

By WALTER BEACH



COACH DAN HANNAN

Track was somewhat of a novel sport at St. Edward's until recent years. The past few years, however, have witnessed its growth into a major sport on the campus. More and more aspirants each year are working for the advancement of the sport. This year has witnessed one of the greatest teams ever to represent St. Edward's, as seen from the two meets in which the team took part prior to this writing.

In the triangular meet held at San Marcos, between South Texas State Teachers College, St. Edward's University, and Schreiner Institute, the Saint thinly clad took second place. It was the first meet of the season, and according to Coach Hannan, it was the blossoming forth of a number of track men, who before they finish their college careers, should do much toward giving St. Edward's a great cinder squad.

The second meet of the season was a dual meet between the Saints and Schreiner Institute, held at Kerrville on April 11. In this meet the Saints emerged victorious by a count of 62 to 50. This was the first track meet won by a Saint team since the inauguration of track as a major sport on the campus. Hannan's men came out of this meet with nine first places and a tie for first to their credit.

The Saint schedule to date is not complete, but two more meets are certain. A dual meet with Southwestern university of Georgetown is being arranged, and it is certain that Hannan will enter his squad in the Conference meet to be held at Brownwood about the middle of May.

The Conference meet will find Hannan's squad on a par with the best. Hannan started the season with only four men from last year to build around. Captain Vance, Parma, and Herron, lettermen, and Finn, squadman from last year were all that Hannan had to begin with. A great deal of the Saint strength comes from the freshmen of this year.



Top row: ROUGEAX, EMMILHAINZ, ROBERTS, HANNAN (COACH), TALERICO, BUSBY, SMITH, QUEBEDEAUX.

Middle row: LOTT, WEARDEN, MUNOZ, RODGERS, McLAUGHLIN, JOHNSON, BIELKOWSKI.

Bottom row: STAVINGHA, FINN, HIJOSKY, PARMA, VANCE, GAULT, BLANCHETTE, HERRON.

Track

The Freshmen who have contributed many points, and upon whom Hannan may rely are: Busby, McLaughlin, Rodgers, Kivlin, Rougeaux, Stavinoha, Gault, and Canion.

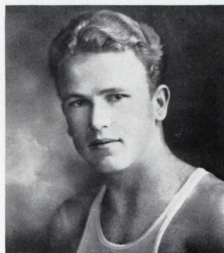
With Captain Vance, Rodgers, Busby, Parma, Finn, McLaughlin, Canion, and Gault in the dashes, hurdles, and relays the Saints should be certain of a number of first places in the Conference meet.

Rougeaux and Munoz are the weight men, and Herron and Kivlin take care of the other field events. Blanchette, Vance, and Stavinoha have made splendid showings in the distance runs.

Coach Hannan has a young relay team with which he expects to break the present conference mile relay record. The team composed of McLaughlin, Rodgers, Finn, and Busby has shown great improvement since the first meet, and their last time on the mile is within four seconds of the conference record.

The first two of the quartette are a pair of tall, lanky boys with long strides, while the latter pair are short but speedy. They all have flash as can be seen from the picture below in which two of the quartette are shown getting off to a flying start.

The remarkable thing about this year's successful track season is that it marks the uncovering of another great track coach. Dan Hannan, one of the fastest dashmen in the conference, is serving his first year as track coach at St. Edward's. Hannan has built a good track team with a limited number of men.



CAPTAIN AL VANCE



MCLAUGHLIN, FINN, AND VANCE SHOW COACH HANNAN THAT AT THE GUN IT'S FLASH

Tennis




CAPTAIN RALPH WARNER

With the return of only one letterman the tennis prospects at St. Edward's were somewhat gloomy at the beginning of the season but due to the brilliant showing made by freshman material tennis hopes were bolstered considerably. At the present writing the Saints have the best tennis team ever to represent the University. The team was composed of Captain Warner, Kossbiel, Mesquita, and Demack. The team was materially weakened by the loss of Ochoa, last year's squadman, who was unable to compete due to illness. Captain Warner and Mesquita constitute a double team on a par with any in the state and should cop conference honors this year. This year's netters were handicapped by the lack of a coach but have played great tennis in matches with the San Marcos Teachers and the Southwestern University Pirates. The work turned in by Warner and Mesquita, masters of the overhead game, stood out in every match and paved the way for the Saint victories on the courts. The Texas Conference Tennis tournament is to be held at Simmons University this year and followers of the Saints predict a better showing than last year when Warner and McClosky went to the finals in the doubles.



Top row: DEMACK, MESQUITA, RAFFAELLI, PITRE.

Bottom row: A. DeHARO, OCHOA, WARNER, R. DeHARO.



Intramural Athletics

Intramural athletics were formally introduced on the St. Edward's campus for the first time during the 1929-30 scholastic year. The Rev. George Mac-Namara, C. S. C., was appointed director of all intramural athletics and was largely responsible for the success that this line of extra-curricular activities attained. Father Mac, as he was popularly known, gave unreservedly of his time and efforts to formulate an intramural system that would prove beneficial to the students. The purpose of intramural athletics at the University is to give every college student an opportunity for athletic recreation. Under the system introduced every student was able to compete on the team of some campus organization.

The various organizations that were represented in intramural sports were: The North Texas Club, East Texas Club, South Texas Club, West Central Texas Club, Knights of Columbus, Czech Club, Spanish Club, John Berchmann's Club, and the All American Club. Great rivalry existed between the teams of these organizations as practically every member of the student body was a participant in the games.

The intramural schedule opened with the basket ball season. Each team was required to play at least two games of basketball a week in order to stay in the league. After a heated race the Knights of Columbus team finally copped the basket ball championship. The indoor baseball season followed close on the heels of the basket ball race for the intramural athletics. Due to the short period of time devoted to this line of sport and inclement weather conditions very little was accomplished.

The intramural schedule for baseball was posted early in the year and the thud of horsehide on hickory was heard several weeks before Coach James had assembled his Varsity nine. At the present writing the North Texans are leading the loop with a 1000 per cent. record. The East Texas Club is pushing the leaders with a record marred by only one defeat.

At this writing plans are being completed by Randolph Papich, student director of intramural athletics, to hold tournaments to determine the winners in track, handball, and tennis. Two days in the first week of May were to be devoted to the running and field events. Tennis matches and the hand ball contest were to follow shortly after the track meet. The members of the championship team in each sport were to receive trophies at the close of the scholastic year from the athletic council. The team having garnered the most points in the various sports throughout the entire season was to be awarded a trophy by the University.

Monogram Club

ROLAND BLACKWELL	REGGIE BOURKE	TOM BURKE
DON BOMBA	FARRIS BROTHERMAN	TONEY BURGER
JACK CAPLIS	JOHN DICKMANN	TOM ESTES
IRWIN FANETTE		MARVIN FARR
DAVE FIGARI		JAKE FITZGIBBON
BOB FRISCH		
DAN HANNAN		
FRANK HERRON		
	LOUIS HERTENBERGER	
CURLY JAMES		
	HAROLD JANSING	
K. J. KIVLIN		
AL LORAN		NELS MACKI
		PAT McLAUGHLIN
HENRY PARMA	MARIO RANSOM	DAN RIVAS
EARL ROUGEAUX	AL SARAFINY	MILTON SCOTT
EUGENE SULLIVAN	AL VANCE	AL VOGT



The conqueror of one pole attempts the other. Commander Byrd, the Antarctic, 1929

PREP SCHOOL

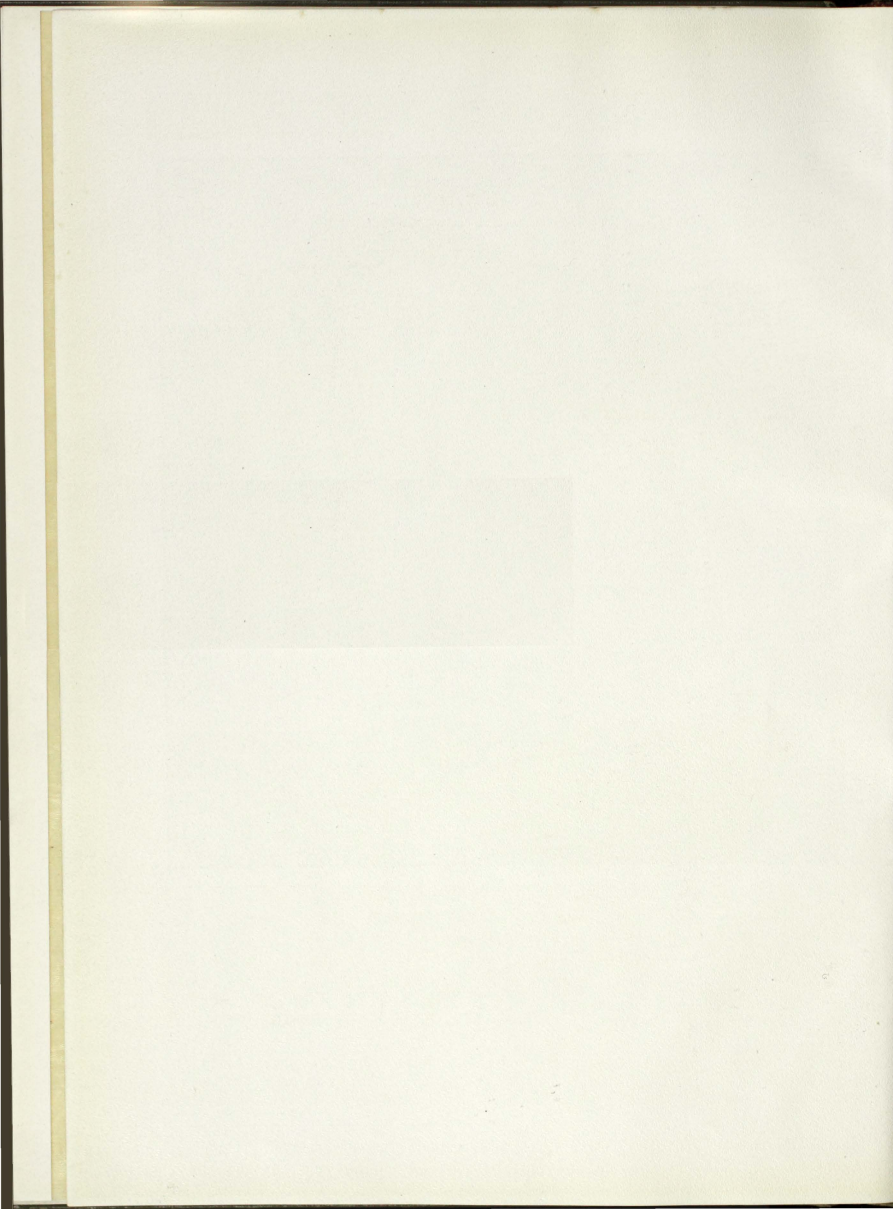
Monogram Club

ROLAND BLACKWELL	REGIE BOURKE	TOM BURKE
DON BOMBA	FARRIS BROTHMAN	TONEY BURGER
JACK CAPLES	JOHN DICKMANN	TOM ESTES
IRWIN FANETTE		MARVIN FARE
DAVE FIGARI		JAKE FITZGIBBON
BOB FRISCH		
DAN HANNAN		
FRANK HERGON		
	LOUIS HERTENBERGER	
CURLY JAMES		
	HAROLD JANING	
K. J. KIVLIN		
AL LOGAN		
		NEL MACKI
		PAT McLAUGHLIN
HENRY PARMA	MARD RANSOJ	DAN RIVAN
EARL ROUGRAUX	AL SAMPNEY	MILTON SLETT
EUGENE SULLIVAN	AL VANCE	AL VOOT



The conqueror of one pole attempts the other. Commander Byrd, the Antarctic, 1929

PREP SCHOOL





The conqueror of one pole attempts the other. Commander Byrd, the Antarctic, 1929

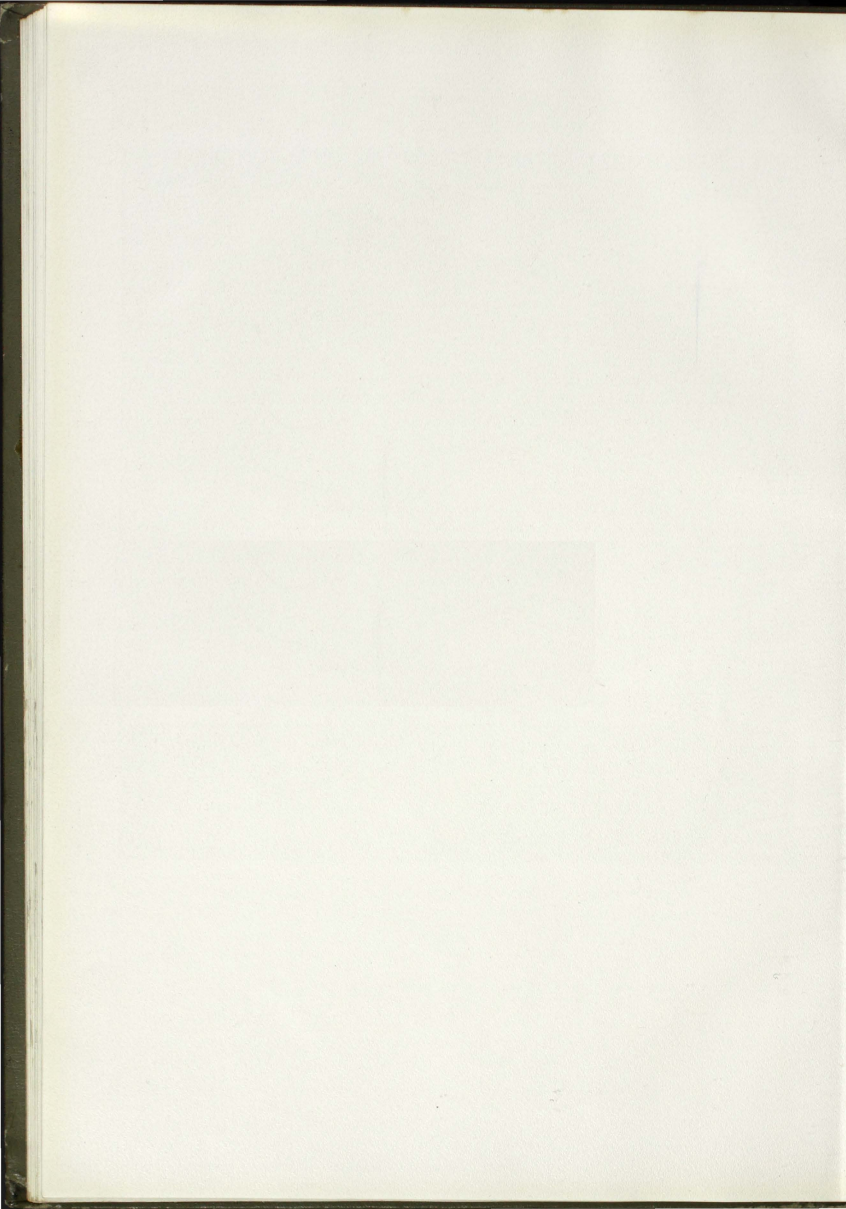
PREP SCHOOL






The conqueror of one pole attempts the other. Commander Byrd, the Antarctic, 1929

PREP SCHOOL





St. Edward's Preparatory School

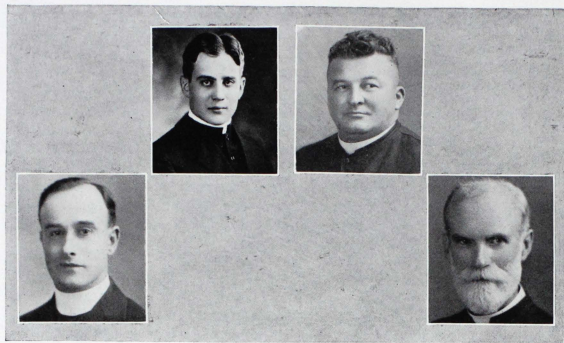
While on a journey through Texas in 1871, in the interests of the Congregation of Holy Cross, Very Reverend Edward Fredrick Sorin, C. S. C., the founder of the University of Notre Dame, purchased one hundred acres of land three miles south of the State capitol, with the intention of there establishing a school similar to the University of Notre Dame. The first progress came in the line of academic work which began immediately and continued to progress rapidly until in a short time there had come into prominence a Preparatory school which was a satisfactory result of Rev. Sorin's efforts.

The first signs of existence came in 1881 when a small school was opened on the old Doyle homestead. Meeting with a fair measure of success from its inception, it gradually increased its facilities and enlarged its sphere of usefulness until in 1885 it obtained a charter from the State of Texas under the name of St. Edward's College, empowering it to confer the usual collegiate degrees in the Arts and Sciences. Although chartered with such power, St. Edward's College attempted very little work beyond the high school grade until later years.

With the administration of Father Schumacher there came a greater interest in the college department and the high school and college were completely separated with regard to faculty and classes. This separation meant a strengthening of both the University and Preparatory School.

The St. Edward's Preparatory School has advanced steadily until today it is fully accredited by the Texas State Department of Education. It is also on the list of approved schools of the Association of Colleges and Secondary Schools of the Southern States. This is the highest form of recognition. It assures the graduate that his credits will admit him to any college or university in the United States which admits upon certificate.

The aim of St. Edward's is to give students a thorough education; to form a well-balanced mind in a sound body. The Faculty recognizes moral training as an essential element of education, and therefore, while ever striving to give the youth entrusted to its charge the finest mental culture, it spares no effort to form in them habits of virtue—right thinking and right living.



Faculty

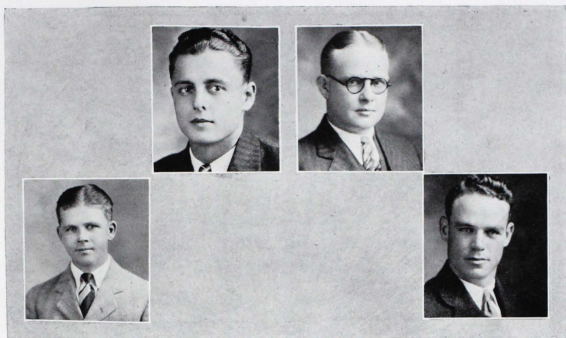
REV. RAYMOND A. PIEPER, C. S. C., A. B.
English, Religion

REV. BERNARD H. B. LANGE, C. S. C., B. S., A. M.
Chemistry, Biology

REV. FRANK C. BROWN, C. S. C., A. B.
Latin

BRO. FRANCIS DE SALES, C. S. C.
Commerce

REV. J. H. FIEDLER, C. S. C., A. B.
History



Faculty

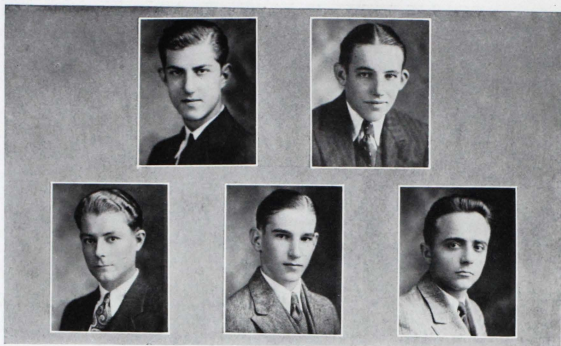
JULIUS I. JAMES, B. S. IN E.
Mathematics

ALEXANDER GULLETT, A. B.
English

REMIGIUS FETTE, A. B.
Chemistry Laboratory

DANIEL M. HANNAN, A. B.
Mathematics

FRANK E. DRUMMEY, C. S. C., LITT. B.
Spanish



Seniors

ALFONSO BENAVIDES

Laredo, Texas

Spanish Club.

C. C. BRADFORD

Manor, Texas

Sec'y-Treas. Senior Class;
St. John Berchman's Society;
Football '27, '28, '29; Baseball
'28, '29, '30.

JOHN CAPLIS

Shreveport, La.

Knights of Columbus.

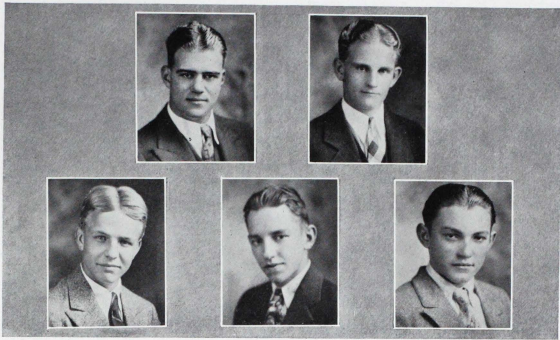
LAWRENCE DAVISON

Almeda, Texas

GEORGE DOW

Santa Rosalia, Chih., Mexico

Spanish Club; Chess Club.



Seniors

CHARLES FANETT

Beaumont, Texas

Football '29; East Texas Club; Knights of Columbus.

EDGAR FETTE

Muenster, Texas

Vice-President Senior Class; North Texas Club; Knights of Columbus.

EDWARD FOLEY

South Bend, Indiana

Dramatic Club '27-'30; St. John Berchman's Society; Sgt.-at-Arms '30; Football '27-'29; Basketball '27-'29.

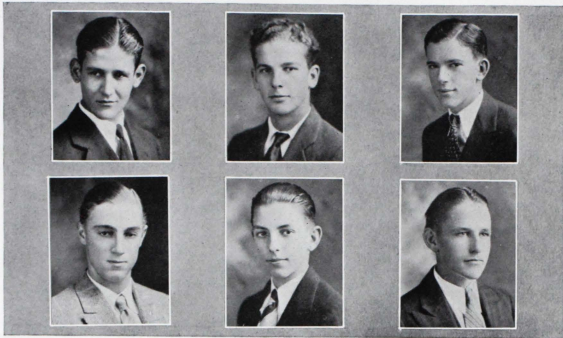
JACK FOSTER

Laredo, Texas

PHILIP KLEIN

Plantersville, Texas

East Texas Club; St. John Berchman's Society; Baseball '30.



Seniors

DAVID LONGORIA
Laredo, Texas
Spanish Club.

JOSEPH MACATEE
Houston, Texas
East Texas Club.

JOHN McLEMORE
Dallas, Texas
Pres. Senior Class; North
Texas Club, Vice-Pres. '30;
St. John Berchman's Society,
Sec'y-Treas. '30; Baseball '30.

EDWARD MANNING
Taylor, Texas

THOMAS MISTROT
Ft. Worth, Texas

JOHN SWEENEY
Dallas, Texas
North Texas Club; St. John
Berchman's Society; Football
'29.

Senior Class History

To each member of the graduating class, the reception of his diploma will mean a different thing. They are all leaving St. Edward's Prep School, some will enter higher institutions of learning while others will begin immediately to make their own way through life. Mingled with the happy thoughts of leaving high school are bits of regret. The class will be broken up and all will be separated, each one will carry with him memories of the happy days spent in study and in play. Fond memories will be cherished of the friendships of classmates.

Activities among the members of the senior class on the campus this year have been more outstanding than ever before. Their efforts have not been confined to any one nature, but have touched on every phase of school life.

In athletics Bradford and Foley have both shown much ability. Besides both having lettered in football for three years, Foley has lettered two years in basketball, Bradford two years in baseball. Although these two have been the best all-rounders, there is also Fanett, Fette, and Sweeney who have seen much service and each lettered a single year in football. Klein coming into the class only in September has shown much promise on the diamond and on the basketball court.

The steady progress in the physical field has in no way hindered the scholastic functioning of the class of '30. They have reached the highest peaks in educational and social aspects. John McLemore has attained much prominence about the campus, he was President of the Senior Class and Vice-President of the North Texas Club. McLemore has also been very valuable in intramural sports and oratorical contests. Fette and Bradford have also been prominent in class work, being Vice-President and Secretary-Treasurer of their class respectively.

The seniors have all entered some kind of social, scholastic, or athletic activity. Benevides, Dow, and Longoria all belong to the Spanish Club. The Saint John Berchman Society boasts of the membership of Foley, McLemore, Sweeney, Davison, Foster, and Klein. Macatee, Caplis, Manning, and Mistrot have gained much popularity around the campus and Macatee is a member of the East Texas Club.

Now that the class has gone through a very progressive and successful year the seniors of '30 are ready to face the future with a broader view of life with its peculiarities. They will wander far and wide, some of them may never see each other again, but there will always be somewhere in their thoughts, memories of the friendships of their fellow students who were always willing to lend a helping hand and see them through their troubles and difficulties which were witnessed at their dear alma mater.



Top row: BUTLER, A. ENDRES, ROOT.

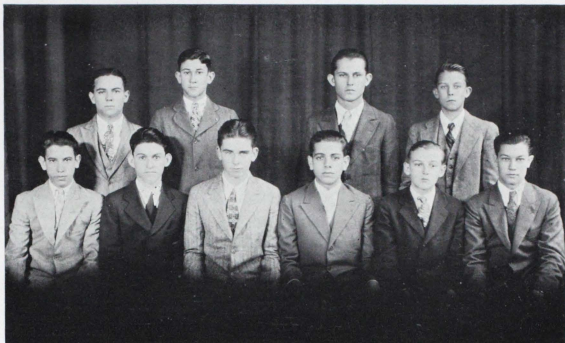
Bottom row: C. HARPER, HENDRICKS, J. CONDON, F. GALO, ROBERTSON.

Third Year Students

The opening of the school year revealed few possibilities of a lucid future for the third year class, but with the passing of time and the acquaintances of the members of the class, the horizon was brightened and by the middle of the year the third year class had emerged from a misty past, and was in its full heights with the other classes and organizations of the academy.

By this time the members of the class had become prominent in the field of athletics, social life, literaries, and other activities about the campus. They had made a name and an outstanding reputation for the class which would in a short time enter into the fourth and last year of its high school career. They had proven that their quality far exceeded their quantity which was comparatively small. They had accomplished many objectives and attained much perfection in all phases of academic life and Christian ideals.

The third year is now coming to a close and the class of '31 can now look back with pride on an illuminous past of which any group of students would be honored to boast. They have overpowered all hindrances, outwitted all handicaps, and hurdled all obstacles which have presented themselves as drawbacks to the success and goal of a class spurred on by ambition and desire for a higher learning.



Top row: P. MURPHY, R. PRATT, KMIEC, G. LUKE.

Bottom row: M. VILLARREAL, GARCIA, RYAN, PONS, THORNTON, HOELSCHER.

Second Year Students

The second year class has turned another leaf in the book of life, it is the second page in the academic chapter and they are mid-way through this section. The second year class has tasted for two years the trials and tribulations which are in High School life. Those who are back from last year are those who are determined to overwhelm their opposition. They are those who are willing to fight for their place on the thrones of higher achievements with the other men of success and fame.

The class has shown their determination for betterment by the active part which they have taken in all campus activities, many of them have been outstanding regardless of their lack of experience and the inconvenience which is evidenced by their small number. These accomplishments have been in athletics as well as in scholastic and social activities both on the campus and in interscholastics.

With the ending of the second year they are ready with much eagerness and anxiety to venture into the mysterious future of the third year of their search for knowledge. They have had only a comparatively small, nevertheless, a fair share of high school life and have learned to endure its hardships and seemingly impossible tasks. They have proven themselves school-worthy and are prepared for the future which fate may have in store for them.



Top row: SCHUMACHER (ASS'T COACH), QUIRK (ASS'T COACH), WALSH, DANGLEMEIR, MADERO, KELLER, LEINDECKER, H. LEONARD, J. BEHLE, TURNER (COACH).
Middle row: FOLEY, FINNEGAN, HENDRICKS, MAJOR, MULCAIRE, FANETT, CONDON, R. BEHLE, KENNEDY, HAMILTON.
Bottom row: LONGORIA, TELLA, ROBERTSON, GALO, COLEMAN, CURTISS, SWEENEY, BARRERA.

Football

The prep football team started practice on the 18th of September. About thirty men reported for practice, including six lettermen from last year. Under the coaching of Al Turner, assisted by John Schumacher and later in the season by Bill Quirk, a smooth functioning machine was soon developed and put into action. The backfield charges were built around Finnegan and Barrera who were the most consistent ground gainers on the squad. The later addition of Bradford was an asset to the team but he was soon lost on account of injury.

In opposition to score indications the Saintlets went through a rather favorable season, their defeats being attributed to the fact that the teams they bucked outclassed them in every respect, except that of gameness and fighting spirit. Lack of material necessary for a team comparable to those which were encountered was also a radical cause of the underclassment of the fighting preps.

The most important games of the season were those with Granger, Thorndale, Bastrop, and Laredo High schools. All of these games were played on foreign soil.

Besides the stellar work of the backs, the able blocking and tackling by C. Fanett, O'Laughlin, J. Keller and Behle in the line was outstanding and contributed much strength in favor of the little Saints, both on the offense and on the defense.

LISTEN, BUD:—

In building this year's Tower we have kept in our minds as an ideal, a book which would be truly representative of the University life at St. Edward's. We set as our goal an annual that would meet with the favor of the entire student body. In making this a representative annual, though, we have also had an eye to the principles of annual building as understood by experienced annual builders. It is our sincere hope that this year's Tower will meet with your approval.

There may be mistakes and places where this annual might be improved; a different picture from the one you selected may have been run, but remember we are students like yourself and we are all liable to make mistakes. Publishing an annual at St. Edward's is no "snap" and is only made possible through the concentrated efforts of the entire student body.

Our work is done and only one thing remains; your criticism. If you enjoy this book and are satisfied with it then we will feel amply repaid for the many hours we have spent on it. We are not martyrs, and are not seeking sympathy for our efforts in building this book for we probably would not have studied more had we not been on the staff. The book is finished and we appeal to you to accept it as the result of many hours of work by your own schoolmates.

We are proud of the Tower of 1930, and with these parting thoughts we offer it to you for your approval.

THE TOWER STAFF.

Advertisements

COMPLIMENTS OF

Knights of Columbus

OF

Fort Worth

COUNCIL No. 759

This Space Contributed by

E. B. SHARKEY
GEO. J. KREYENBUHL
B. H. MANNING
REV. HENRY FELDERHOFF
JOHN G. TINKER
JAS. T. TUOHY
W. E. BIDEKER
GUY J. A. BOUDREAUX
L. R. BOUDREAUX
F. N. SMITH
FRED S. GORCZYCA
J. P. McCORMICK
GEO. A. COOK
W. A. SULLIVAN

FRANK GILMORE
WALTER R. WELCH
WILL H. RICE
R. T. FINN
THOS. CUMMINGS
DR. M. V. CREAGAN
A. M. McELWEE
W. P. HIGGINS
WM. J. SHAW
D. T. COSTELLO
C. M. HUBER
A. C. BROUSSARD
T. P. O'GARA
DR. LEO E. PHILLIPS

CLUB ROOMS, 1004 Lamar Street

Visiting Knights Welcome

Compliments of

ASSOCIATION

of

FORMER STUDENTS
OF ST. EDWARD'S
UNIVERSITY



Officers

Honorary President, REV. JOSEPH BURKE, C.S.C., Ph.D.
ST. EDWARD'S UNIVERSITY
AUSTIN, TEXAS

President, LEONARD J. SCHNEIDER
AMERICAN NATIONAL BANK
AUSTIN, TEXAS

Vice-President, FERDINAND J. KINANE
CARE BOWMAN-CRAVENS FURNITURE CO.
AUSTIN, TEXAS

Secretary-Treasurer, ELMORE H. BORCHERS
ST. EDWARD'S UNIVERSITY
AUSTIN, TEXAS

Trustees

JACK MEAGHER, *Houston, Texas*
GEORGE BURKITT, JR., *Houston, Texas*
W. J. BROOKE, *Waco, Texas*
LAURENCE L. KEOUGH, *Dallas, Texas*
C. L. KOPECKY, *Yoakum, Texas*
ALBERT SARAFINY, *Austin, Texas*

THE AMERICAN NATIONAL BANK

Depository of the United States

Austin, Texas.

Forty Years of Service and Protection

Officers

H. A. WROE, <i>Chairman of Board</i>	THEO. LOW, <i>Vice President</i>
R. C. ROBERDEAU, <i>President</i>	L. D. WILLIAMS, <i>Cashier</i>
L. J. SCHNEIDER, <i>Vice President</i>	H. PFAEFFLIN, <i>Assistant Cashier</i>
E. R. L. WROE, <i>Assistant Cashier</i>	

Directors

W. H. BADGER	R. C. ROBERDEAU
J. T. BOWMAN	L. J. SCHNEIDER
W. S. DRAKE	EDGAR SMITH
THEO. LOWE	H. A. WROE
CHAS. ROSNER	A. J. ZILKER

Vice President L. J. Schneider, Former St. Edward's Student

—With a Reputation
Known Since 1878



Gifts
for All Occasions

Birthdays, Engagements, Weddings, Anniversaries,
Card Prizes, Etc.

Diamonds

Watches

Silver

Crystal

Pottery

Leather

Athletic Trophies

HERTZBERG'S

HOUSTON STREET
AT ST. MARY'S



AT THE SIGN
OF THE CLOCK

SAN ANTONIO, TEXAS

UNITED STATES DEPOSITORY

The Friendly Bank

THE
AUSTIN NATIONAL
BANK

RESOURCES \$10,000,000.00

AUSTIN, TEXAS



WM. H. FOLTS, *President*
JOHN H. CHILES, *Vice President*
T. H. DAVIS, *Vice President*

MORRIS HIRSHFELD, *Vice President*
C. M. BARTHOLOMEW, *Vice President*
and Cashier

LEFFLER CORBITT, *Assistant Cashier*



*—We are Known for
Our Fine Diamonds*

DIAMONDS
WATCHES
JEWELRY

ON EASY CREDIT
No Interest

“Home of Good Luck Wedding Rings”



514 East Houston St.

78th Year

San Antonio, Texas

OFFICIAL PHOTOGRAPHER
FOR
THE TOWER

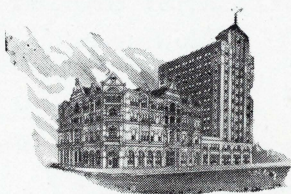
1927-28 — 1928-29 — 1929-30

All Negatives are Kept on File

THE ELLIOTTS

814 CONGRESS AVENUE

AUSTIN, TEXAS



The Driskill Hotel

AUSTIN, TEXAS

Cafe and Coffee Shop

W. L. STARK, Manager

300 ROOMS OF SOLID COMFORT

RATES MODERATE

PURE ARTESIAN WATER

COMPLIMENTS OF

We Do Family Washing
DIAL *Austin Laundry* DIAL
3566 & DRY CLEANING CO. 3566
EVERY WASHING IS STERILIZED!

Compliments of

GARNETT LEWIS, MGR.

American Cleaners & Dyers



1516 LAVACA

PHONE 6685

Conducted by the Sisters of the
Holy Cross

St. Marys Academy

AUSTIN, TEXS

Class "A" Affiliation with
St. Mary's College, Notre Dame,
Indiana, and the University
of Texas

Academic and Preparatory
Departments

Special Courses

Commercial, Domestic Science,
Domestic Art, Music and
Fine Arts

*Address: Sister Superior
For Catalogue*

Aesop's Fables Modernized

Once there was a little boy named George, the pride and joy of Palestine. George, having completed his course at the local kindergarten, decided to go to college.

Now George was a very, very good boy, but at college there were some very, very bad boys, and they led lil' George astray.

Soon little George began to smoke cubebs and say "lulu" and other such degrading expressions. He even learned how to dance and became the most popular man at the local Elks Club dances.

At first George's conscience bothered him terribly but after awhile he could stand around on East First street without even blushing.

One dark and stormy night poor little George came staggering into his room and stood wringing his hands and sobbing. His roommates anxiously gathering around him, and beseeched him to tell them what was the matter.

"Alas," replied George piteously. "I have drained the cup of iniquity. She led me astray. She . . . She kissed me. How will I ever be able to face the leering stares of the world. I will become an outcast."

Two months later, George, with his head bowed and clutching his diploma to his heart, returned to Palestine and opened up a pawnshop.

Moral: Stray not from the path of righteousness and justice.



Hart Schaffner &
Marx Clothes

DESIGNED ESPECIALLY

for

College Men



JUD S. JAMES

Successor to

STEBBINS & JAMES



*"If It's Done With Heat,
You can do it better with
Natural Gas."*



TEXAS PUBLIC
SERVICE CO.



THINK FIRST OF WARD'S

WHENEVER YOU THINK of BUYING

MONTGOMERY WARD & CO.

Phone 3636

Austin, Texas

409-11 Congress

Designs Furnished on Request

“THE ATCO, Inc.”

Manufacturing Jewelers

Makers of

College, School and Fraternity Jewels, Medals, Etc.

AUSTIN, TEXAS

COMPLIMENTS OF
SAN ANTONIO COUNCIL
No. 786
KNIGHTS OF COLUMBUS
SAN ANTONIO, TEXAS

COMPLIMENTS OF
Our Lady of the Lake
College
for Women

SAN ANTONIO, TEXAS

The DALEY-MOFFATT Hotel System Operates the Following Hotels in
Louisiana and Texas:

The NEW CHARLESTON *Hotel*
Lake Charles, La.

THE VIRGINIA HOTEL

Monroe, La.

THE BENDER HOTEL

Houston, Texas

THE COTTON HOTEL

Houston, Texas

THE O'NEILL HOTEL

Palestine, Texas

The Daley-Moffatt Hotel System

J. E. DALEY, *President*

R. H. MOFFATT, *Vice President*

L. A. GREVEMBERG, *Secretary-Treasurer*

HOUSTON'S STUDENT HEADQUARTERS

"We Print Without Cuts"

STANDARD PRINTING AND
LITHOGRAPHING COMPANY

PRINTERS, LITHOGRAPHERS AND BLANK
BOOKMAKERS



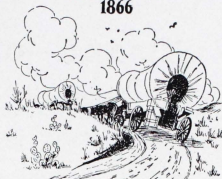
Largest Two-Color Press in the South
Label Work Solicited



1207-11 CAPITOL AVENUE

HOUSTON, TEXAS

ESTABLISHED
1866



serving Houston
from the days of the
Covered Wagon



COMPLIMENTS OF
William L. Edmundson

HOUSTON, TEXAS

COMPLIMENTS OF

Von Boeckmann-Jones Co.

Fine Printing

811 CONGRESS AVENUE

Compliments of

Railey Paper Company

Wholesale Dealers in

SCHOOL SUPPLIES

PHONE 3485 310 EAST FOURTH ST.

FAMOUS SAYINGS

Al Sarafiny says that marriage in the olden days of the long skirts and busties was really the first blindfold test.

As mumbled by John Dickmann: "We all yearn for loving, but some of us have a greater yearning capacity than others."

Vogt says that he calls his girl "Cuspidor" because he always misses her.

Max Dunn says that every time he describes his girl he has to write a form letter.

George Pessoney calls his girl "Equator" because her line is warm and purely imaginary.

Robt. Mueller & Bro.

THE AUSTIN TRUNK FACTORY

Largest and Most Complete Line of

TRUNKS AND LEATHER GOODS
IN CENTRAL TEXAS

510 CONGRESS AVENUE

AUSTIN, TEXAS

Gugenheim-Goldsmith Co.

Wholesale
Fruit and Produce

Austin, Texas

San Antonio, Texas

Kenedy, Texas

List of Favorites:

Best All Round Athlete: VIC COWART.

Faculty Favorite: FR. MAC

Prettiest Boy: JOHN GAIDA FINN

Most Popular Stude (Stewed):
MILES O'LAUGHLIN

Most Chic: GEORGE PESSONEY

Most Collegiate: STUMPY FAN-IT

Most Conceited: "ART" FITZGIBBONS

Champion Tea Drinker: T. JANSING

You Don't Wait on Us

PK appreciates

the patronage St. Ed's students
have accorded him. They
always prefer

P	} Sandwiches } Waffles } Salads } Pastries } and Coffee	P
K		K

*Service the Whole
Night Through*

PK

Sandwich Shop

*Two Convenient Locations
Opposite University
Deep Eddy*

"THE COVERED YARD"

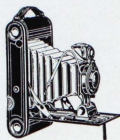
Kuntz-Sternberg Lumber Co.

ANYTHING IN THE LINE
OF BUILDING MATERIALS

PHONE 4344

FIFTH AND RED RIVER STS.

Kodak Finishing and Supplies---Picture Framing



Commercial Photography

- EXTERIORS
- INTERIORS
- FLASHLIGHTS
- GROUPS
- ENLARGEMENTS
- COPIES

JORDAN-ELLISON CO.

615 Congress Ave.

Phone 7472

"Your Eastman Kodak Dealer"

GRIFFITH DRUG COMPANY

"Where Quality Counts"

A. W. GRIFFITH O. G. ECKHARDT

Scarbrough Bldg. Austin, Texas

Phone 5361-62

DRINK THE BEST

John Bremond's Coffee

AT YOUR GROCERS

ESTABLISHED 1847

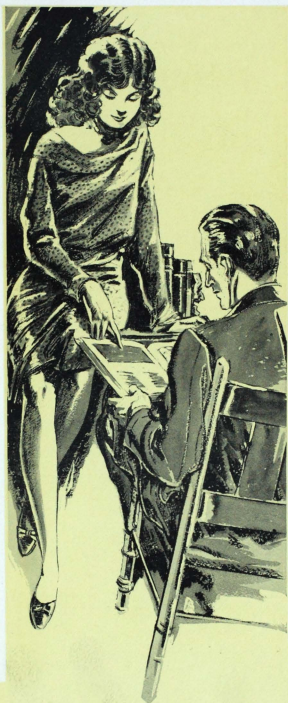
AUSTIN, TEXAS

SUREBEST BREAD

The Family Loaf

Southwest Baking Co.

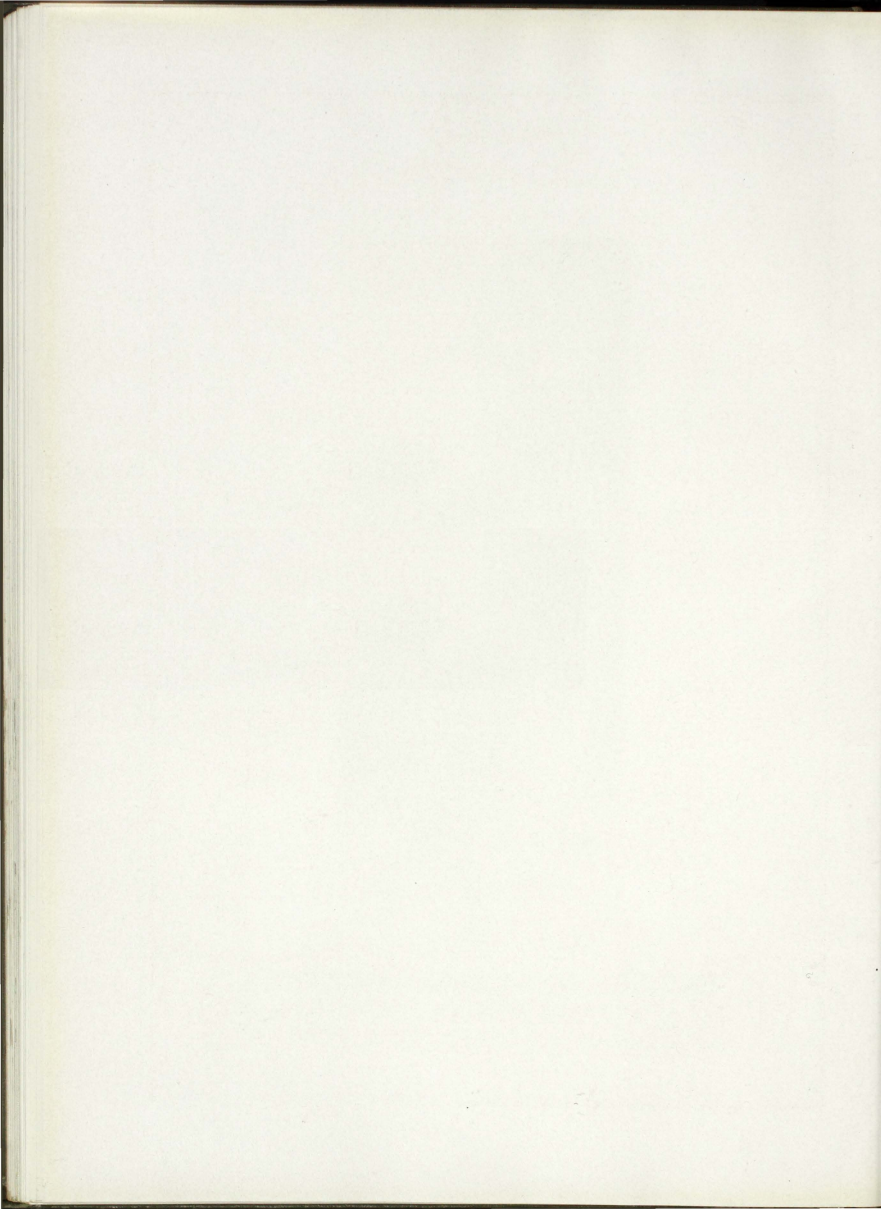
WALT PAULISSEN, *Mgr.*



SERVICE ENGRAVING COMPANY

▲ ▲ ▲ SAN ANTONIO, TEXAS ▲ ▲ ▲

BUILD FOR SUCCESS WITH SERVICE



COMPLIMENTS OF
BOWMAN-CRAVENS
FURNITURE CO.

OF AUSTIN, TEXAS

Everything for the home at reasonable prices.

412-14 CONGRESS AVE.

MAJESTIC
MAN'S SHOP

Creators of Fashion

EDDIE JOSEPH, Mgr.

AUSTIN, TEXAS



Men Who Demand
Style . . .

should see this new, smart model just received with any others from the W. L. Douglas Shoe Co. Cut from fine leathers, built over an easy-treading last. A shoe that will find favor with the man who demands style and comfort at a moderate price.

JOSEPH'S MAN'S SHOP

"College Men's Clothes"

111 EAST SIXTH
OPPOSITE DRISKILL HOTEL

FATHER HEISER SAYS—

"IF IT'S A BOOK—YOU CAN GET IT AT GAMMEL'S"

Gammel's Book Store

1004 CONGRESS AVENUE

COME IN AND BROWSE A BIT

COMPLIMENTS OF
Flury Advertising Agency
AUSTIN, TEXAS

VOSS & KOOCK
WHOLESALE
CHINA, GLASS, SILVERWARE AND HOTEL SUPPLIES
*Complete Equipment for Kitchen and
Dining Room*
PAINTS AND VARNISHES
AUSTIN, TEXAS

COMPLIMENTS OF
CHAS. B. COOK
AUSTIN, TEXAS



RUSHED? DON'T WAIT TO MAIL THAT ORDER

FOR PRINTING

PHONE 5540

Our Representative Will Call in a Few Minutes

FIRM FOUNDATION PUBLISHING HOUSE

104 EAST EIGHTH STREET

AUSTIN, TEXAS

KODAKS
FINISHING---ENLARGING

In at One—Out at Five

BOONE PHOTO CO.

EASTMAN DEALER
1000 Congress Ave.
Courtesy—Quality—Service

Republic Bank and Trust Company

AUSTIN, TEXAS
CAPITAL \$200,000.00
OFFICERS

ELDRED MCKINNON, <i>President</i>	LEO KUHN, <i>Cashier</i>
WALTER BREMOND, JR., <i>Vice President</i>	R. E. CARRINGTON, <i>Assistant Cashier</i>
HERMAN BOHN, <i>Vice President</i>	F. M. DUBOSE, <i>Assistant Cashier</i>
HAL ATKINS, <i>Assistant Cashier</i>	

WE INVITE YOUR BUSINESS—COURTESY GUARANTEED

Miller Blue Print Company

STUDENT ENGINEERING SUPPLIES

108 E. 10TH ST.

AUSTIN, TEXAS

LIGHTSEYS SYSTEM

BLACK AND WHITE CABS
CHEAPEST RATES IN TOWN
Two for the price of one
DRIVERLESS AUTOMOBILES
2262 GUADALUPE
Phones 2-3188—3444
112 EAST SEVENTH ST.
Phones 2-3188—5555

WHEN IN TOWN EAT AT—

LOOKE'S CAFE

815 CONGRESS AVENUE

FOX-SCHMIDT

CONTRACTORS

*Plumbing, Heating, Electric
and Repairs*

TELEPHONE 6069

415 W. SIXTH AUSTIN, TEXAS

The Spirit of '30

TIME: *Then*

PLACE: *There.*

PURPOSE: *Anything; Suit Yourself.*

MORAL: *Judge not a man by his buddy.*

CHARACTERS: *As They Appear*

Right, Left, and

Center; Up and Down.

Have you ever heard the story about traveling salesman Barta and Kossie the chorus girl? Well, this is not about that. It must have been two other neckers. Maybe it was Estes and Tom Chauvin. Who cares anyway? This is our story and we'll stick to it despite the applesauce. We strolled into the roadhouse and who should we see but Oscar Estes Chauvin playing Post Office. Jansing and Warner were in the corner cooing, sipping alternately out of their fifteenth cup of tea. The place looked like a love nest and we would not have been there if we had not been dispatched there by the Grind Editor.

Conway, the noisy child from South Dakota, was making eyes at some flaming Mamie. "Weasel" Papich, otherwise known as: Beedle, Hairbrush, Ambassador, Trunk Line, Glassleg, Absorbine Jr., Camel, Jazzheimer, Horse-face Klotz, Aspirin, Witch Hazel, Manager, Piltdown, Baggage, and Suction, came waddling in, carrying his knapsack in a wheelbarrow. He was looking for Sulak to talk over their plans for a prize winning annual for '31.

(Contd. Pg. 98645300.)

Hirshfeld & Anderson

THE HOUSE OF

KUPPENHEIMER CLOTHES

619 CONGRESS AVENUE

HEIDENHEIMER & COMPANY

Importeers and Wholesale

GROCERS

CIGARS AND
TOBACCO

AUSTIN, TEXAS

Help Where Help Is Needed Most

*Those Who Wish to Help a Very Worthy Cause Can Do so by
Giving Any Donation to the*

Franciscian Missionary of Mary

Who Are Sacrificing Their Lives to the Caring of the Lepers.

Headquarters: Fruit Hill Ave., N. Providence, Rhode Island

Municipal Gas Company

DALLAS TEXAS

Furnishes natural gas service to the cities of Wichita Falls, Denison,
Sherman, McKinney, Denton, Hillsboro, Cleburne,
Waxahachie, Ennis and Corsicana.

IF IT IS DONE WITH HEAT YOU CAN DO IT BETTER
WITH GAS

MUNICIPAL GAS COMPANY

Dallas, Texas

COMPLIMENTS

Fanette Insurance
Agency

306 GASTON BLDG.

DALLAS, TEXAS

COMPLIMENTS OF

George W. Burkitt, Jr.

HOUSTON
TEXAS

WE PAY INTEREST ON TIME DEPOSITS

Security Trust Company

CAPITAL \$400,000.00
SURPLUS AND UNDIVIDED PROFIT \$325,000.00

AUSTIN, TEXAS

Make My Place Your South Austin Headquarters

DRINKS
SMOKES
and SWEETS

In a Confectionery That Is Kept Homelike

A. J. RAIF---Your "School Barber"

1710 SOUTH CONGRESS

Since 1886

WALTER WILCOX

The Store for College Men

PRESENTS CORRECT STYLES IN

CLOTHING—HATS—SHOES—FURNISHINGS

Have had the pleasure of serving the students and faculty of Saint Edward's University over 40 years—Your visits are always welcome.

University Styles

Victory Wilson is style headquarters for College Men because we feature the correct styles that are popular on the campus of the leading universities—and moderately priced, too.



Cor. Houston and Losoya
San Antonio, Texas

MIKE F. HUBER,
Manager

Meet Me at the Gunter Hotel

JOHN WILLIAMS

OUTFITTERS FOR MEN

A Good Place to Trade

CR. 295

SAN ANTONIO, TEXAS

COMPLIMENTS OF
INCARNATE WORD COLLEGE

SAN ANTONIO, TEXAS

MARUCHEAU-GRIGG CO.

MANUFACTURERS

GENUINE MEXICAN PECAN CANDIES

Packed in 1-2-3-5 Pound Boxes

Shipped Anywhere

719 South Flores Street

San Antonio, Texas

KEEP ABREAST OF THE TIMES IN
CATHOLIC CIRCLES BY READING

THE SOUTHERN MESSENGER

OFFICIAL CATHOLIC NEWSPAPER OF TEXAS

NEWSY — INSTRUCTIVE — ENTERTAINING

SUBSCRIPTION, \$2.50 PER YEAR

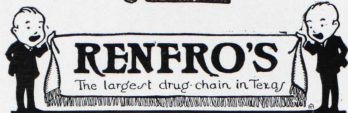
SAMPLE COPIES ON REQUEST

SAN JACINTO BLDG.

SAN ANTONIO

Rexall

HIGHEST
QUALITY



COURTEOUS
TREATMENT

LOW CUT PRICES EVERY DAY
THREE CONVENIENTLY LOCATED STORES

DR. CHARLES F. KENNEY
DR. HELENE E. KENNEY

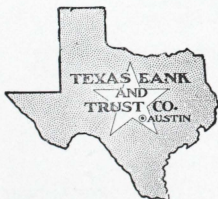
OSTEOPATHS

710 W. T. Waggoner Building
FORT WORTH, TEXAS

COMPLIMENTS OF

GIESECKE & HARRIS

ARCHITECTS



A GOOD BANK TO START WITH
A GOOD BANK TO STAY WITH

Your Business Appreciated

EVERY FINANCIAL
SERVICE

Calcasieu Lumber Co.

46 YEARS OF HOME BUILDING IN AUSTIN

ALWAYS GLAD TO SEE YOU

Austin, Texas

A little advice we overheard Brotherman giving his buddy Cowart: "In promulgating your esoteric cogitations or articulating any superficial sentimentalities and amicable, philosophical or psychological observations, beware of platitudinous ponderosity. Let your conversational communications possess a clarific conciseness, compacted comprehensibility, coalescent consistency and a concatenated cogency. Zealously eschew all conglomerations of flatulent garrulity, jejune babblement or assinine affectations. Let your extemporaneous decantings or unpremeditated expatiations possess intelligibility and careful vivacity, without rhodomontade or thrasonical bombast. Sedulously avoid all polysyllabic profundity, pompous prolixity, psittaceous vacuity, veniloquent vapidty. Shun double entendres, prurient jocosity and pestiferous profanity, obscurent or apparent."

COMPLIMENTS OF

MARKS GRAIN COMPANY

ALL KINDS OF FEED, GRAIN, ETC.

We Surely Appreciate Your Business

Reinhardt Lumber Company

LUMBER, MILL WORK AND BUILDING MATERIAL

WE BUILD AND FINANCE HOMES

SEE US

PHONE 2-2798

AUSTIN, TEXAS

501 W. 5TH ST.

COMPLIMENTS OF
T. H. WILLIAMS & CO.

AUSTIN, TEXAS

THE SPIRIT OF '30—(Cont'd from 98645300)

Sulak came in to inform "Manager" Papich that Egg had just congratulated him on signing his engraving contract. "Manahan" Loran, and "Ears" Vogt were eating pretzels and dumbly trying to figure how much they had painlessly extracted from their fellow students. Brotherman and Ransom were asleep in the corner. Farriss was probably dreaming of a fair maiden at I. W. C., judging from the jilted look on his face. Stumpy, with a pair of tennis shoes in his hands, was explaining to Parma how he got back to school on time after a date. Parma was trying to inveigle him to "double date" with him, but Stumpy had already promised to double with Pessoney, who was in the front patting waves in his hair.

Warner and Mims, who have been many places together, were out in the shade of the porch playing hands. They were contemplating going to San Antonio together if they could think up some way to disguise so they could catch a ride. In truth everything was quiet and peaceful when in dashed Joe Behle and hollered for shorts on an already second-handed cigarette that Rat McCurdy was smoking with the air of asbestos finger tips. This story goes on indefinitely and so could we, but Ye Olde Editor says we must close with love to all. Evidence for the foregoing is taken from voluntary testimonials of the characters. Toodle O-O!

THE
PALACE OF SWEETS

HIGH GRADE

Candies, Ice Cream, Cigars and Tobacco

We Specialize in Serving Delicious

SANDWICHES AND EXCELLENT COFFEE

420 CONGRESS AVENUE

Reasonover's

the meeting place for St. Edward's Students for a nice hair cut.

REASONOVER'S BARBER SHOP

LITTLEFIELD BLDG.

AUSTIN, TEXAS

Things We Would Like to Know

Who is Herbert?

Why Figari loves Sadie?

Why they call Hannan "Intramurals"?

Why Sarafiny is called "Egg"?

Who named Bomba "High School Hero"?

Who wrecked shack No. 3?

How Barta earned his E.B. degree?

Who cut the Weasel's pants?

How come Dick Strauss is called "Hold-me-tight"?

What is a Navajo Party?

Who Fanette took to the Senior Ball?

Who Warner loves in Dallas?

Why Koeclar didn't win the oratorical contest?

Why Gus Strauss is called the "All Round Athlete"?

Who told Gullet he was a baseball coach?

NICK LINZ

"Master Cleaner and Dyer"

Not the cheapest—but by far the best.

See our St. Ed's Agent.

"BUTLER BRICK SINCE '73"

Elgin-Butler Brick Co.

GENERAL OFFICES

AUSTIN, TEXAS

Students We Can't Forget

- "Five o'Clock" Brotherman.
- "Intramurals" Higgins.
- "Glider" Schwab.
- "Fishy" Finn.
- "Hoffman" Sullivan.
- "Pick-up" Fanette.
- "Wilma" Kossbiel.
- "Brandy" Dunne.
- "Zimpie" McCune.
- "Sprinkle" Brammer.
- "Lord Lipton" Jansing.
- "21" Byrne.
- "Scotchman" Pessoney.
- "Nursie" Busby.

Millett Mansion

*Rooms
With
Bath*

Every room is equipped with private bath or connecting bath.

*Home
Cooked
Meals*

The dining room has an air of quiet refinement where good home-cooked meals are served by deferential waiters.

*Special
Sunday
Dinners*

A special feature of the Millett Mansion is its Sunday dinners. Phone 8718 for reservation.

Transient visitors are extended the hospitality of the Millett Mansion while in Austin.

MILLETT MANSION

900 Brazos M. ESTES Phone 8718

The Blarney Stone

RINGS
DANCE PROGRAMS
ANNOUNCEMENTS
BADGES
JEWELRY
PHONE 9989

506 Scarbrough Bldg.
AUSTIN, TEXAS

COMPLIMENTS OF

ALFF, the Florist

AUSTIN, TEXAS

Dial 6442

STEWART PHOTO CO.

COMMERCIAL PHOTOGRAPHY, KODAK FINISHING,
ENLARGING AND PICTURE FRAMING

"We make the new Vakitone border prints which always please"

1206 S. CONGRESS

AUSTIN, TEXAS

PHONE 7067

Compliments of

Seton Infirmary

AUSTIN, TEXAS

MAJESTIC AND QUEEN THEATRES



HOME OF PARAMOUNT PICTURES
PUBLIX THEATRES

C. A. DAHLICH

Furniture, Carpets and Draperies
Upholsters and Interior Decorators

1410-12-14-16-18 Lavaca Street

AUSTIN, TEXAS

Ben Garza's Market

*U. S. Government Inspected Meats
DRESSED POULTRY*

Quality, Service and Sanitation

PHONES 2-1124 - 2-1125

115 West Sixth St.

PHONE PRESTON 2623

PREST-O-LIGHT BATTERY SERVICE

CHANNEL GARAGE

Corner Prairie and Austin

STORAGE—24-HOUR SERVICE

HOOD TIRES AND TUBES

GAS, LUBRICATING OIL

Washing, Polishing and Greasing

GENERAL AUTO REPAIRING

W. J. McINNERENY, Manager

Houston, Texas

COMPLIMENTS OF

ARTHUR L. HAMILTON

HOUSTON, TEXAS

JNO. R. YOUNG N. J. DANNENBAUM J. J. UNDERWOOD W. O. WOODS

John R. Young & Company

Insurance

Established 1909

Houston, Texas.

WHEN YOU HAVE TIRE
TROUBLE DIAL 3666

JOE WEBB

MOHAWK QUALITY TIRES

608 LAVACA STREET
AUSTIN, TEXAS

AUSTIN BUILDERS SUPPLY CO.

BUILDING MATERIALS AND
BUILDERS' SPECIALTIES

D. G. HEWLETT, *Pres.-Mgr.*

PHONE 7230

401-3 EAST 4TH STREET



BEACON SHOES

\$5 - \$6 - \$7

Known Around the World

BEACON SHOE STORE

716 Congress Avenue

AUSTIN, TEXAS

J. R. Reed Music Co.

" YOUR FRIENDS "

Austin's Leading Music House

BECKER LUMBER COMPANY

QUALITY *and* PRICES ALWAYS RIGHT

PHONES 3548-3549

On Congress Avenue at the Bridge

MONTE VISTA INN

SERVES

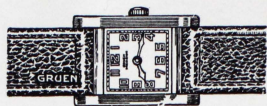
SANDWICHES — COLD DRINKS
LUNCHES *and* KEG NEAR BEER

E. L. BAUER, *Proprietor*
ROUTE 6—BOX 26

ON POST ROAD—NORTH OF ST. EDWARD'S ENTRANCE

CARL MAYER CO.

JEWELERS &
DIAMOND
MERCHANTS
AUSTIN, TEXAS



GRUEN WATCHES
AND GOOD GIFTS
STELFOX'S
Jewelers

MAVERICK CAFE

"ALWAYS RELIABLE

CONGRESS AT SEVENTH STREET
AUSTIN, TEXAS

Millican & Hamby

INSURANCE
MORTGAGE LOANS
ESTABLISHED 1902
SCARBROUGH BLDG.
AUSTIN, TEXAS

LaTouf & Andara

WHOLESALE FRUIT AND PRODUCE
602 EAST AVENUE
PHONE 9913
AUSTIN, TEXAS

COMPLIMENTS OF
HOGAN-ALLNOCH
DRY GOODS COMPANY

WHOLESALE ONLY
HOUSTON, TEXAS

Pabst Engraving Co.

ENGRAVERS
MANUFACTURING
STATIONERS
222 LOSOYO ST.
SAN ANTONIO, TEXAS

N. A. Quintanilla

MULTIGRAPHING
PRINTING
DIRECT MAIL
ADVERTISING
210 HICKS BUILDING
SAN ANTONIO, TEXAS

WARD & TREADWELL
OPTOMETRISTS

Seventh & Congress

Specialists in the
EXAMINATION OF EYES
and the
FITTING OF GLASSES

Patton Transfer Co.

Operators

RENT-A-CARS-YELLOW CABS-BAGGAGE
MOVING VANS-AUTO LIVERY

We have many cars as low as 10c a mile in our
Drive-Ur-Self Fleets

BONDED WAREHOUSE HEAVY HAULING

417-19-21 Cong. Ave. — 116 E. 7th Street

Phones 2-1111-7777 Phone 7777

25th and Guadalupe Streets

Phone 4929

Before prohibition you used to see a lot of people out on the streets drunk, but nowadays they can't even get out of the house.

He made his first move in a Checker cab, but she jumped him for it.

Duran says that he likes good jokes when they are not above his head, and Sullivan says that he feels the same way about sea-gulls.

One way for a girl to get in deep water is to refuse to neck in a canoe.

Koegler says that you can't tell what kind of a necker a fellow is by the number of loving cups he has won.

An optimist is a lady who does not give a "darn" what happens as long as it doesn't happen to her.

What is a home without a mother?
Companionate marriage.

A pinch of salt is greatly improved on a warm afternoon by dropping it in a cold stein of cold beer.

"50 Years in Austin"

Compliments

Stacy Realty Co.

REAL ESTATE
INSURANCE

DEVELOPERS OF

TRAVIS HEIGHTS ADDITION
(Near St. Edward's University)

"Don't Cuss—Call Us"

B. E. Howell & Son

PLUMBING, HEATING AND
ELECTRIC

1312 South Congress Ave.

Phone 2-2311

B. E. HOWELL AUSTIN, TEXAS





