

TOWER





# ST. EDWARD'S UNIVERSITY 1987 TOWER

SEPTEMBER 1986 - MAY 1987  
AUSTIN, TEXAS



*Photo by KIRSTIN  
GRIFFIN*

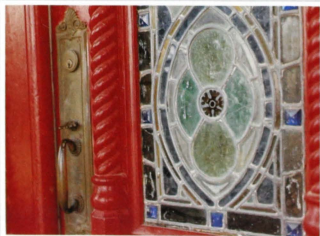
## OPENING NEW DOORS



DAMIAN MORGAN



T.J. MARSHALL



T.J. MARSHALL

KIRSTIN GRIFFIN



Photo by KIRSTIN GRIFFIN

## Table Of Contents

OPENING	I
STUDENT LIFE	12
ACADEMICS	40
SPORTS	74
ORGANIZATIONS	108
PEOPLE	124
CLOSING	166



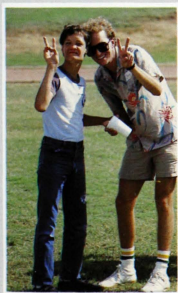
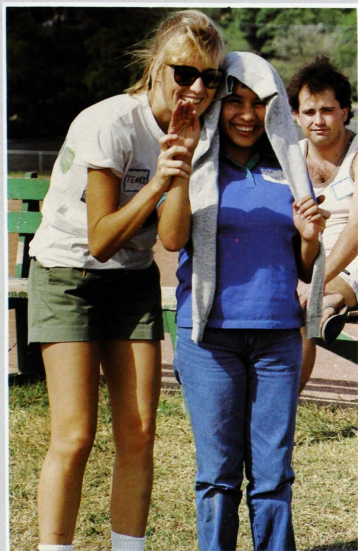


All Photos by T.J. MARSHALL



## BAWDY AND BAD — MR. DOYLE CONTEST

# SPECIAL OLYMPICS FOR SPECIAL PEOPLE



This Founder's Day, the Academy of Science coordinated a day of fun and games for some very special children. With the help from Circle K and SAC, both children from The Texas School for the Deaf and the Texas School for the Blind participated in various events. Some of these included relay races where children ran from a pool to a bucket and filling it by wringing out wet sponges, and also a basketball toss. The day ended with a large barbeque with hot dogs and soda.

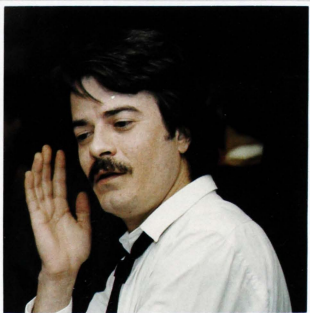
The Academy of Science hopes to make this an annual event to help the handicapped and show they care. This is just another example of how St. Edward's students are continuing to open new doors.



Photos by T.J. MARSHALL

**GOLD OR GONG?  
TALENTS STRUT THEIR STUFF!**





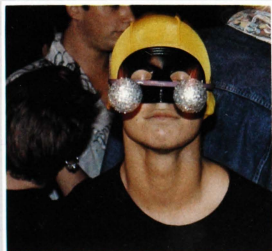
Photos by T.J. MARSHALL

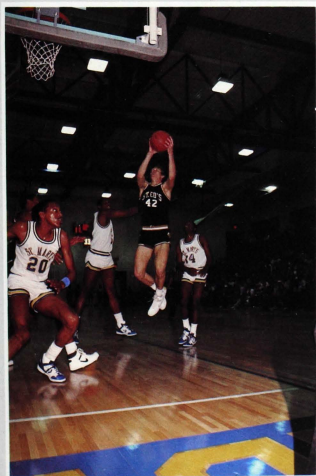
# FACES



# HALLOWEEN HYSTERIA

Photos by T.J. MARSHALL

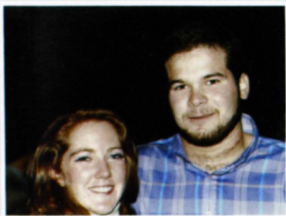




Photos by AL PUENTE



# 'TIS THE SEASON OF JOY

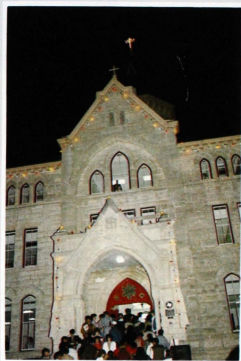


The Festival of Lights at St. Edward's is an occasion that is looked forward to by many Austinites all year long. However this year the lighting of the main building was special because of the completion of the remodeling of the main. Everyone at St. Edward's received a long awaited gift with the opening of the main and new recreation center.

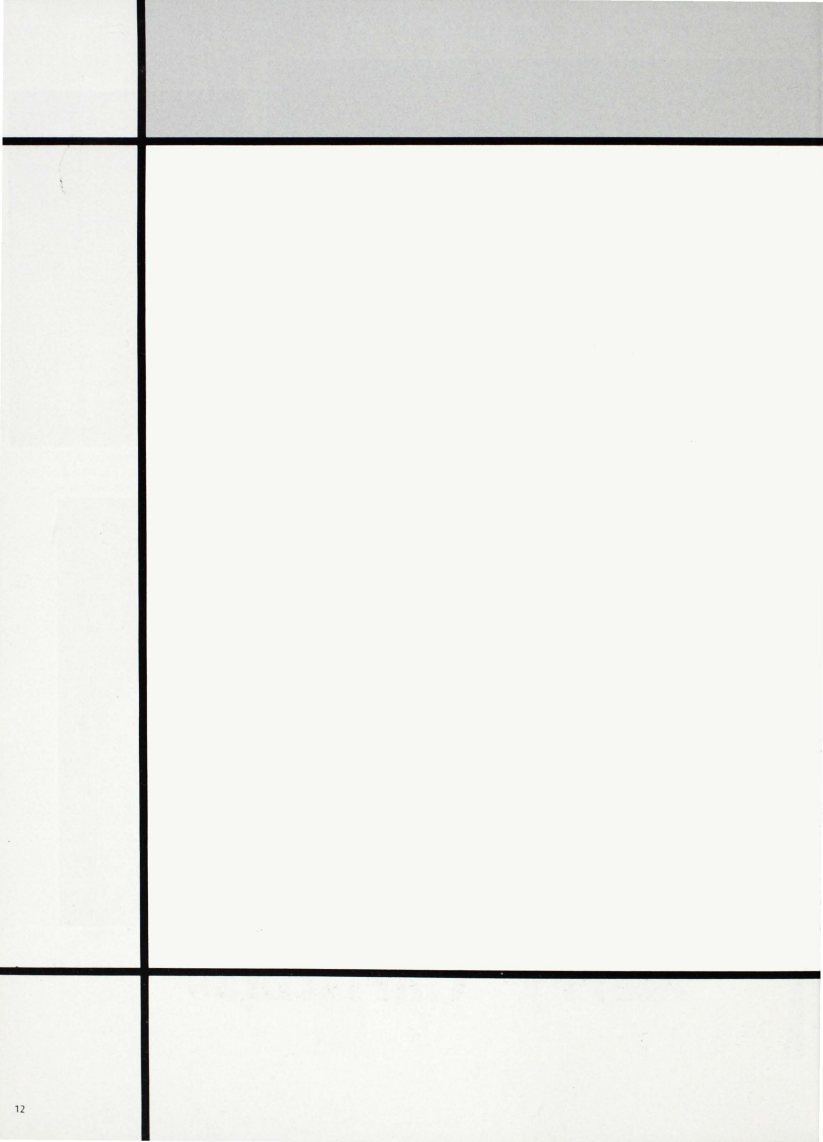
Here at the Festival of Lights, students, faculty, alumni, and city spectators stood waiting for the lights to be switched on and the caroling to begin. Afterwards, tours were held of the newly remodeled main, and there was a great sense of the Christmas spirit in everyone.

*Photos by KRISTIN GRIFFIN*





**Merry Christmas**





# STUDENT LIFE

## LESS IS MORE

by HEATHER MCKISSICK

It's amazing when you talk to someone who has lived in Austin just about their entire life and haven't even heard of Saint Edward's. Unfortunately, it is true that our community here on the hill is often overshadowed by a much larger and seemingly more glamorous university. And when you tell someone about Saint Ed's, the fact that it is a smaller university often leads them to believe that although the quality of education you receive may parallel that of a larger school, you are undoubtedly limited in social opportunities. I disagree.

No matter what the university, a student's social life can be as exciting, or as stagnant, as he or she chooses to make it. Nevertheless, it is essential to redefine the terms "social life" and "social opportunity" in order to understand exactly how a student's life at Saint Edwards is enhanced rather than limited by its comparatively tiny size.

A social life may be judged by some as far as how many people you know or friends you claim. Social success is often weighed in terms of popularity. And a fantastic social opportunity may not extend far beyond a great party on Friday night. But then again, the spectrum of social success may be broadened when you take into consideration the quality of social interaction that is involved. Webster says "social" has something to do with natural growth among others, and at Saint Edwards, social growth rather than simple interaction is almost inevitable. A student's social life at SEU reaches beyond casual interaction among peers due to the intimate atmosphere that we share. Smaller classes encourage discussion and even friendship between faculty and students. And the limited number of students assures a friendly, or at least familiar face no matter where you may be on campus. There is a sense among everyone in the Saint Edwards community that all things here are to be shared unity that all things here are to be shared by all.

But are we being sheltered? Does the familiarity and friendship that are characteristic of a smaller school somehow blind us to the realities of the big, bad world? Granted, we are spared from mile-long hikes from class to class and an occasional dose of intimidation may be good for the soul, but learning to function well among a sincere group of committed individuals may be the best preparation

of all for life outside of academia. Here, there are no elaborate organizations behind which we can hide our individual identities. Our work and our play is associated with no one but ourselves. The social activities we do enjoy are based on our unique abilities to express our own ideas, quirks, and values. This stress upon the individual student combined with the intimacy of our campus serves as premium practice ground for the infamous "real" world. We are being prepared to hold our own, learning to interact with people on all levels of the social stratosphere. Where else can you suffer through a grueling RCM conference and then head over to the Reunion for a cold one --- with the professor! And hopefully, such genuine social sharing as is seen at Saint Edwards will provide an excellent example to the rest of the world when they see the confidence and pride of self-assured graduates making their way through the confusion of modern times. Productive, unique individuals whose social skills have been polished to near-perfection thanks to the specialized and genuine support with which Saint Edward's University, small as it may be, has provided them.



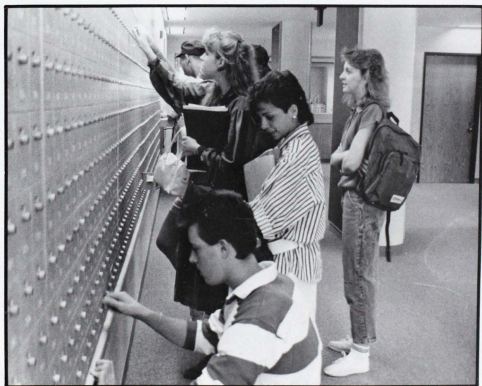
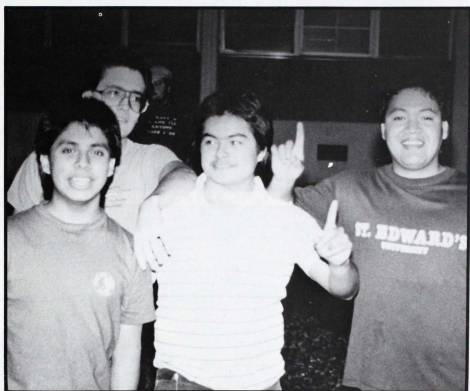
photos by SAMARA FLENER



photo by  
DAMIAN MORGAN

photo by  
SAMARA FLENER

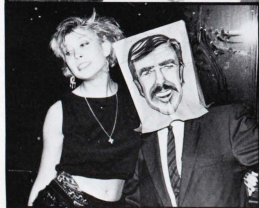
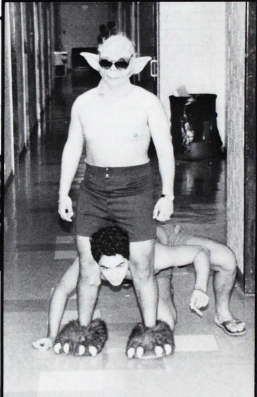
photos by T.J. MARSHALL







photos by T.J. Marshall





---

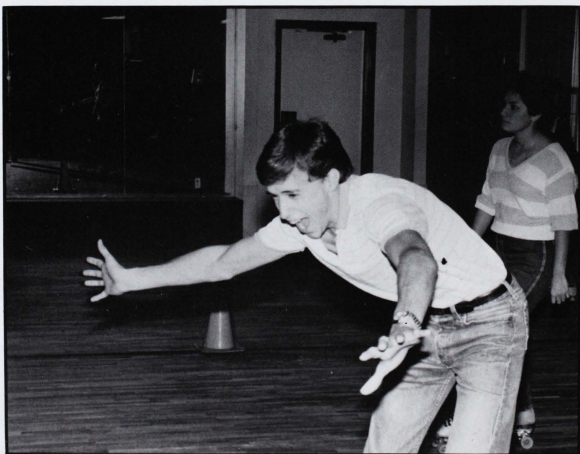
## MORE ST. EDWARD'S HALLOWEEN HYSTERIA!

---





FUN? . . . . . YES!







PROFESSIONALS? . . . NO!



*photos by T.J. Marshall*

# MID-WEEK BASHES WITH THE KILLER BEES,



ST. ED'S STUDENTS  
DANCE AWAY THE  
MID-WEEK BLUES



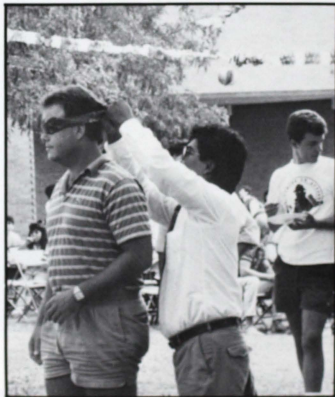
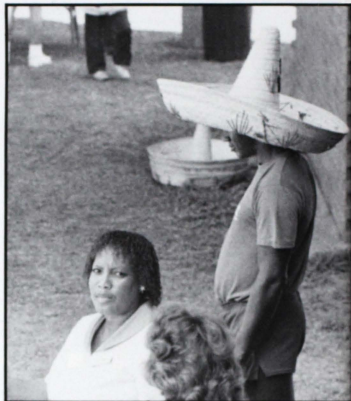
*photos by T.J. MARSHALL*

# TRIK TRAX, AND THE URGE!



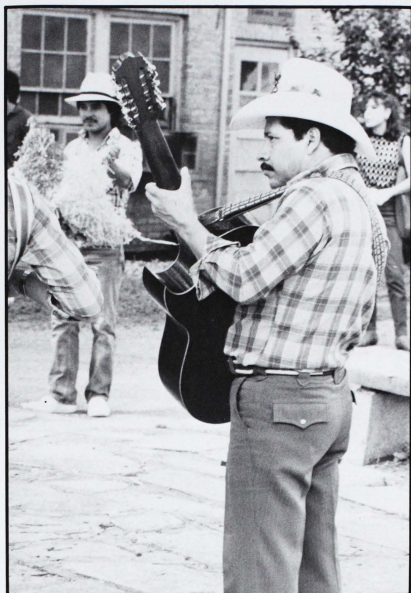
# DIEZ Y SEIS

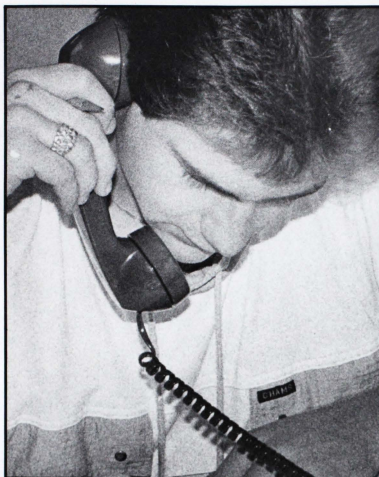
MEXICAN INDEPENDENCE DAY CELEBRATION AT ST. ED'S



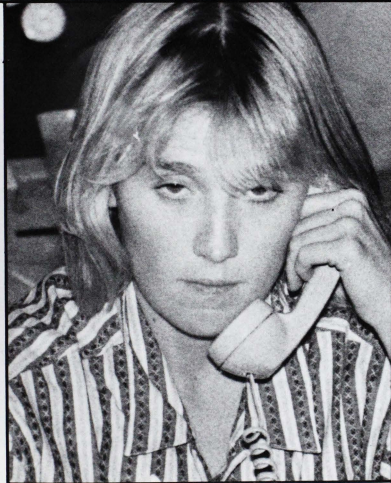
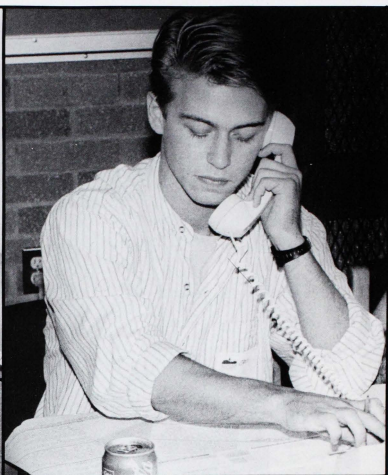
*all photos by DAMIAN MORGAN*

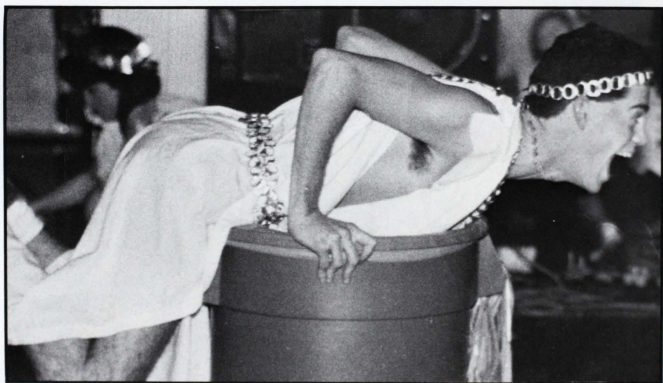
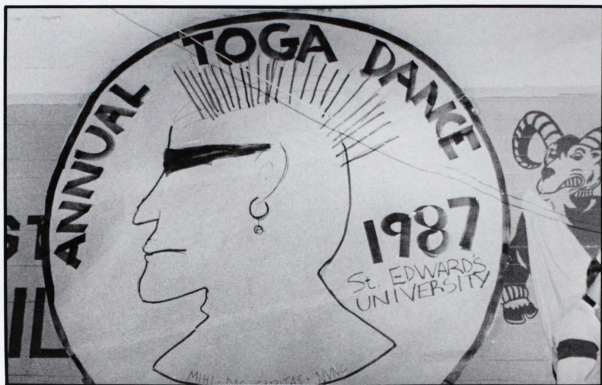








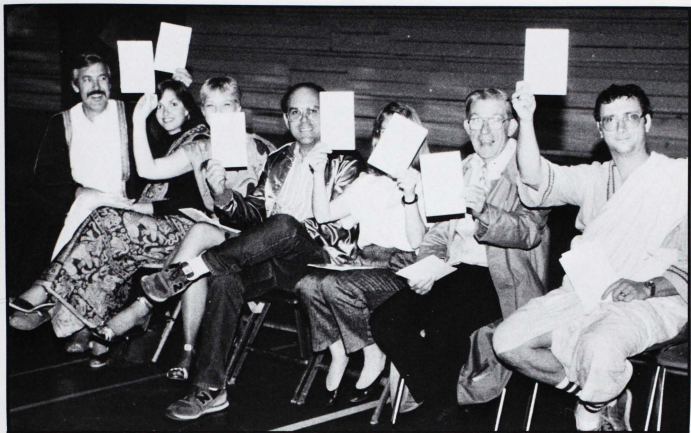




TOGA

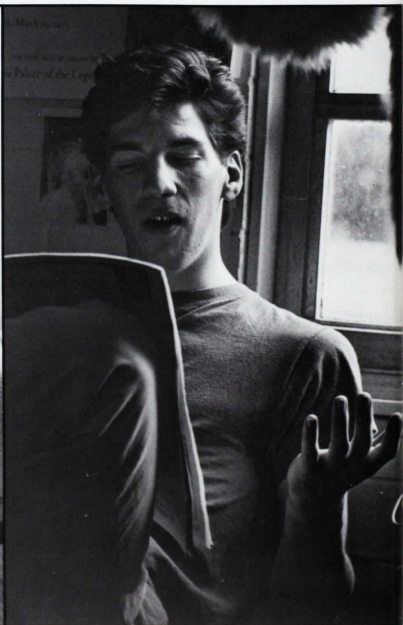
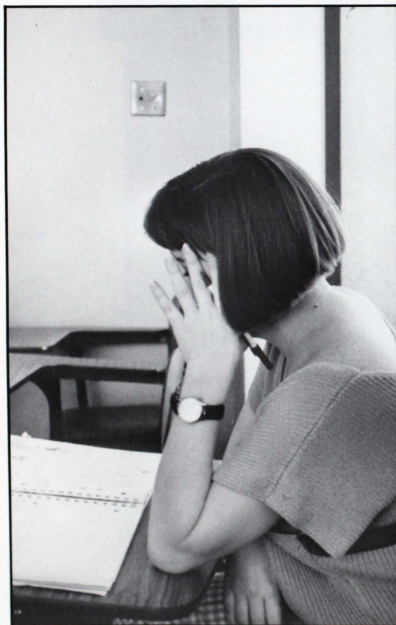
TOGA

TOGA



TOGA  
TOGA TOGA!



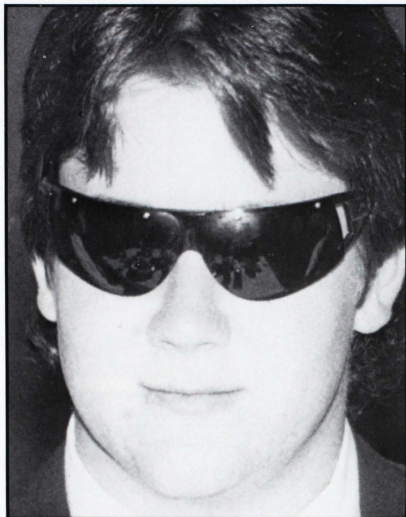




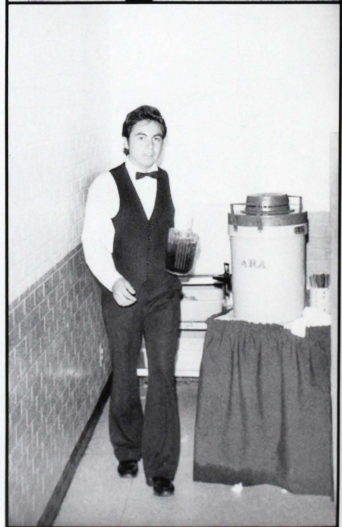


Photos by T.J. MARSHALL





*Photos by T.J. MARSHALL*

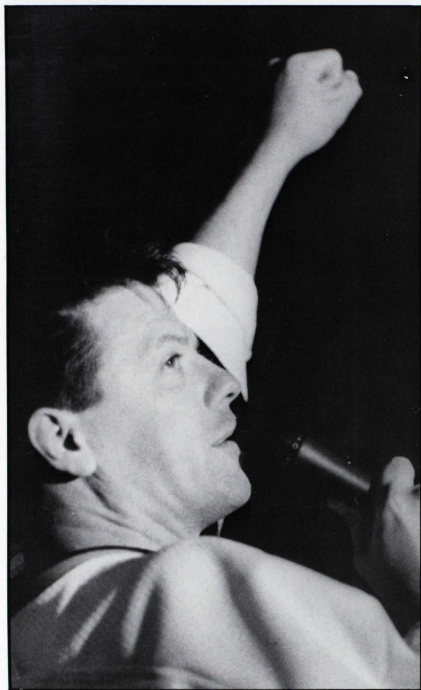




**RA SEMI-FORMAL**  
And  
**SOPHOMORE**  
**DANCE**

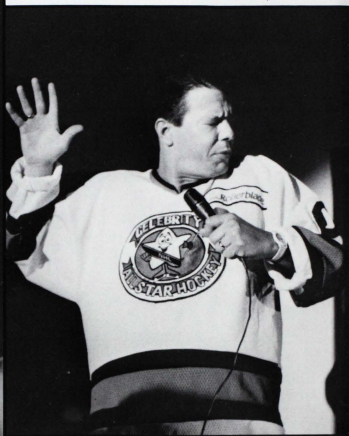


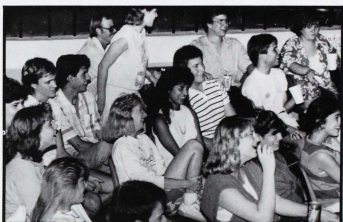
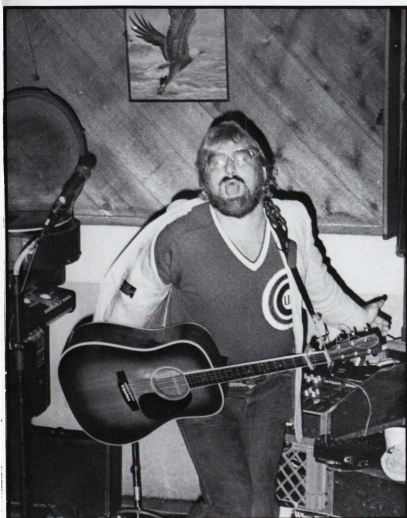




ALEX  
COLE

Photos by JEFF WILSON





Photos by T.J. MARSHALL

DAVE RUDOLPH

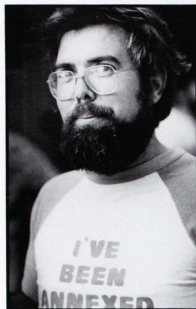


Photo by DAMIAN MORGAN



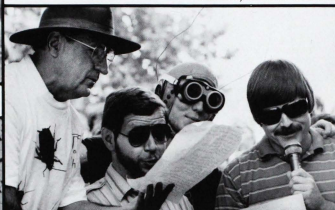
Photos by DAMIAN MORGAN



Photos by T.J. MARSHALL



Photo by JEFF WILSON



Photos by T.J. MARSHALL

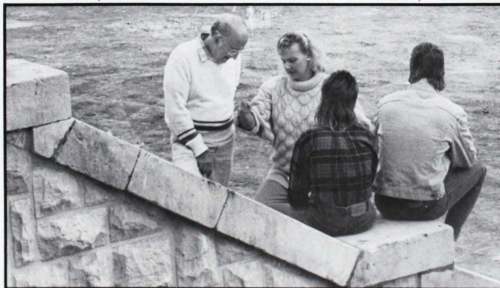


Photo by T.J. MARSHALL

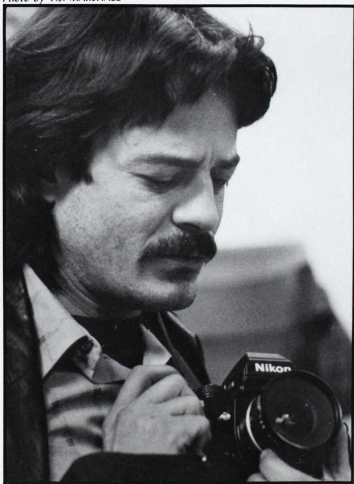


Photo by JEFF WILSON





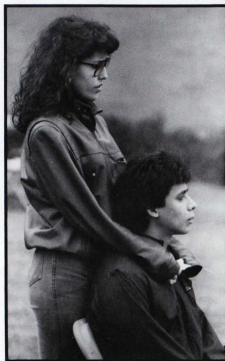
*Photo by T.J. MARSHALL*



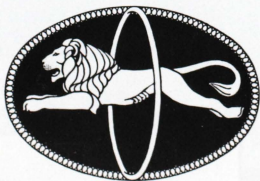
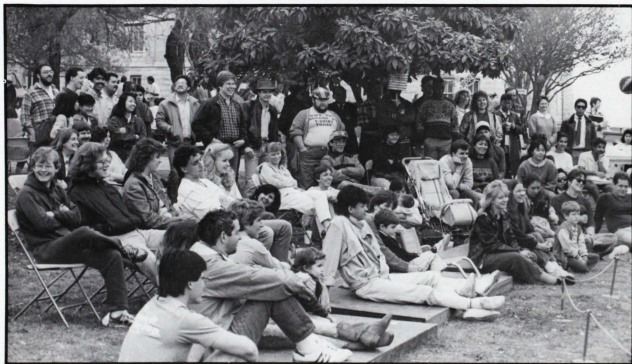
*Photo by JEFF WILSON*

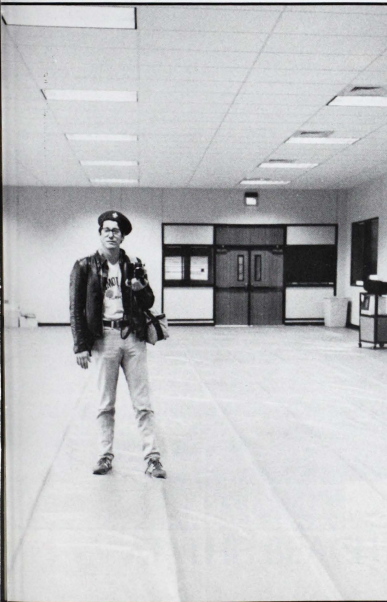
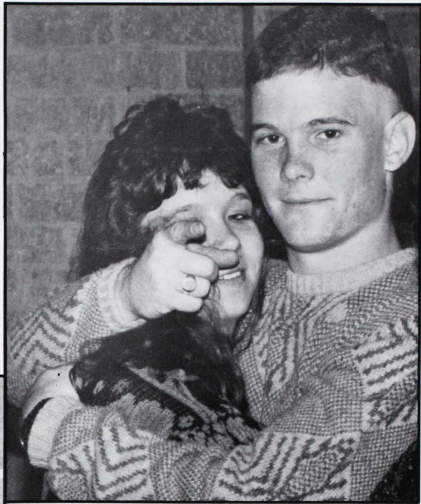
*Photo by JEFF WILSON*

# ROYAL LICHTENSTEIN CIRCUS



Photos by JEFF WILSON





Photos by T.J. MARSHALL



# SURF'S UP AT SEU

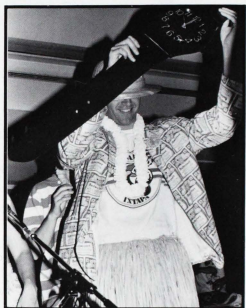


photos by T.J. Marshall

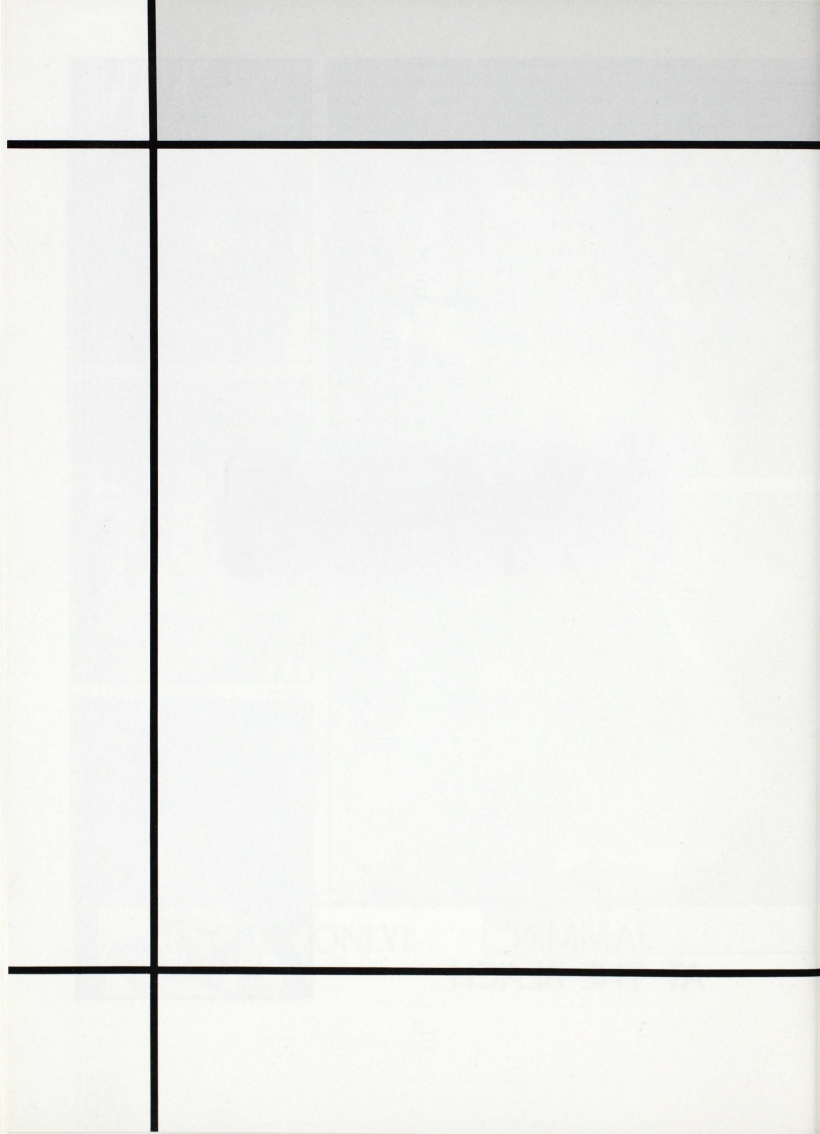


**LOCALS ONLY!**





# JAMMIN' AT THE BEACH







**ACADEMICS**



*all theater photos by  
MICHAEL P. SERHUS*



# THEATRE

ONCE UPON A MATTRESS  
THE MEDEA  
THE MISER  
THE MIRACLE WORKER



MARY MOODY NORTHEN  
THEATRE

Once Upon  
a  
Mattress

Jay Thompson, Marshall Barer  
Dean Fuller and Mary Rodgers

**Sept. 30 • Oct. 12**

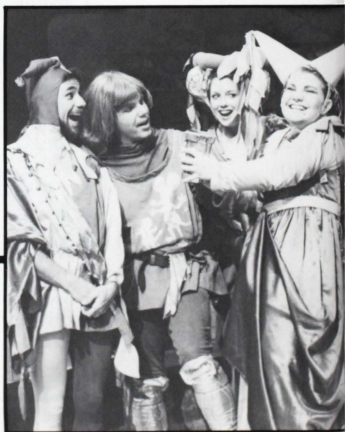
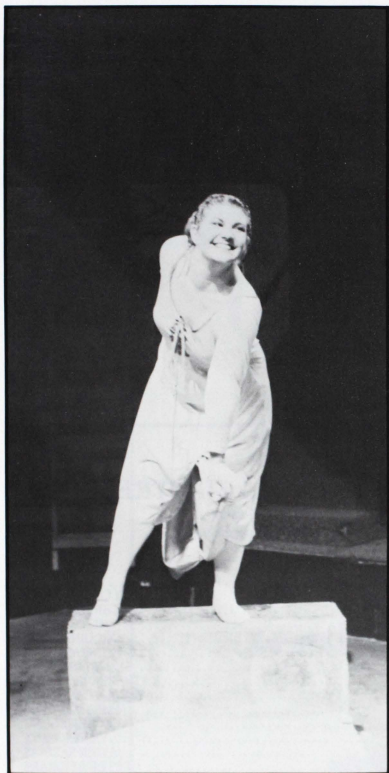




## ONCE UPON A MATTRESS

Cast of Characters  
(In order of appearance)

MINSTREL .....	DAVID SCOT
PANTOMIME PRINCE .....	VICTOR PENA
PANTOMIME PRINCESS .....	GAYNELLE CALDWELL
PANTOMIME QUEEN .....	CHRISTIE ORTH
WIZARD .....	MITCH BERRY
PRINCESS NUMBER TWELVE .....	COQUINA DUNN
LADY ROWENA .....	SHARI GETZ
LADY MERRILL .....	SHERRI GRIFFITH
LADY BEATRICE .....	KATHLEEN McCLAIN
LADY MAYBELLE .....	GAYNELLE CALDWELL
SIR STUDLEY .....	JAMES VENHAUS
SIR HAROLD .....	ROBERT LONG
SIR LUCE .....	VICTOR PENA
SIR CHAUNCEY .....	JAVIER SALINAS
PRINCE DAUNTLESS .....	PETER BEILHARZ
QUEEN AGRAVAIN .....	HEIDI SCHWARZENBART
LADY LARKEN .....	ADRIANNA GUERRA
KING SEXTIMUS .....	ARNOLD VILLARREAL
JESTER .....	CHUCK PULLIAM
SIR HARRY .....	MIKE HAMILTON
PRINCESS WINNIFRED .....	CYNTHIA HASKETT
WENCH .....	COQUINA DUNN
THE NIGHTINGALE OF SAMARKAND .....	CHRISTIE ORTH
MALE UNDERSTUDY .....	NATHAN GILLON
FEMALE UNDERSTUDY .....	CHRISTIE ORTH







## Theatre Department Plans To Expand

Theatre Director Susan Loughran has high hopes that in the near future SEU will build a new theatre to facilitate the ever growing theatre department.

"The possibility of a new theatre," stressed Ms. Loughran "remains just that, a possibility. With a new fine arts building, students could be trained, taught, perform, and build props, and costumes."

She gave some ideas of what a new Fine Arts building might house. Some of these additions would include, a proscenium stage, a black box theatre, flexible seating, a costume shop, sound proof rooms, choral room, and maybe even a dance studio.

It is already a thought of tearing down the old costume shop and making the old bookstore into the new costume shop.

"The current theatre is an Arena Theatre, which limits the production the department can put on," added Melba Mishler, Business Manager. She says some productions require a "proscenium" theatre.

MS. Mishler says, "If additional theatre opens up to students it would provide better facilities for training, increased curriculum, rehearsal space, lighting set design requirements and interaction with the performing community of Austin."

This year the program had 65 students. Next year the faculty and staff are expecting to have 80 students. This list of ideas seem to echo the growth of the theatre department ... just another way St. Edward's is trying to open new doors for it's students and it's community.



Once upon a time, in a faraway kingdom ... where ONCE UPON A MATTRESS took place. Well, not this year. This year it took place right here at the Mary Moody Northern Theatre. It was an adult musical version of THE PRINCESS AND THE PEA. The show was full of wacky antics of the princess Winnifred and her court. The SEU theatre was filled with laughter during this charming performance, as well as the crazy performances by the SEU students.

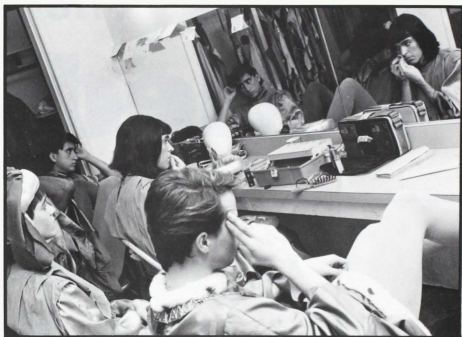
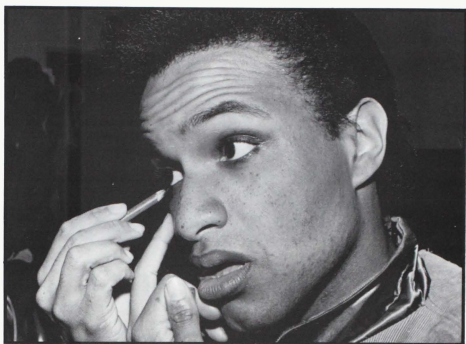












MARY MOODY NORTEN  
THEATRE

The  
**Medea**

by Euripides

NOVEMBER 11-23



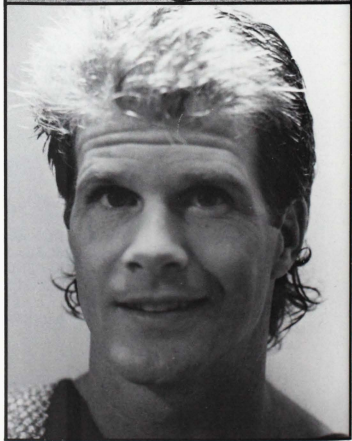
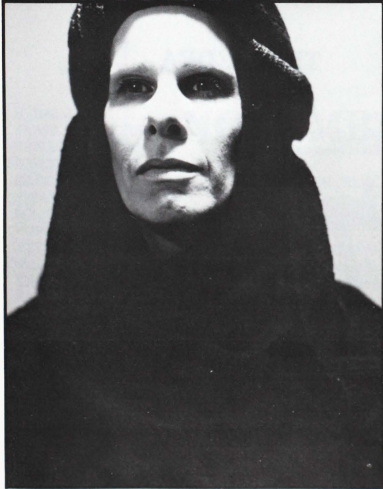




## THE MEDEA

### Cast

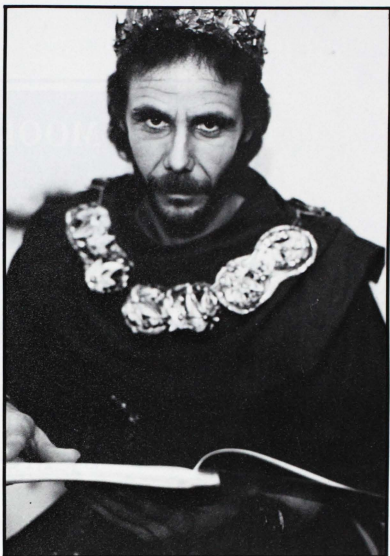
NURSE to Medea.....DIXIE SMITH  
TUTOR to Medea's children.....ARNOLD VILLAREAL  
TWO CHILDREN of Medea and Jason.....MATTHEW BREWER  
STEPHEN BREWER  
CHORUS OF CORINTHIAN WOMEN.....JILL GILES  
KATHALEEN McCLAIN  
DENISE ODEM  
YVETTE BRUN  
MEDEA, princess of Colchis and wife of Jason.....CAROL VAN NATTA  
CREON, King of Corinth.....CHUCK PULLIAM  
JASON, son of Aeson, King of Iolcus.....BRIAN PATRICK CLARKE  
AEGEUS, king of Athens.....GARY BERGMAN  
MESSENGER.....TOM LANDEN  
SOLDIERS.....RON HAYES  
JOHN PAGE SPEARS II  
UNDERSTUDY TO JASON.....DAVID SCOT











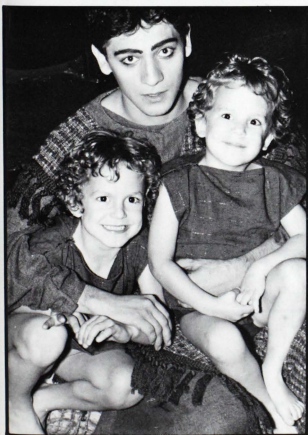
GENERAL HOSPITAL Star at St. Ed's

Brian Patrick Clarke, known by General Hospital fans as Grant Putnam, was a guest star at the Mary Moody Northern Theatre for the Greek tragedy, *THE MEDEA*. Clarke, who has played off Broadway and in the mid-west, was very excited about being in his first Greek tragedy. He played Jason, Medea's husband.

As for the guest-artist program at St. Edward's, Clarke stated, "It is a terrific program. I have been treated so well, it's been delightful. It is also good for the students to have contacts with professional actors, although the students themselves are very professional. More than some "pros" themselves."

Brian had never had any acting experience until he started doing commercials. When he was 24, he left Oklahoma with \$800 and arrived in Hollywood. He found a job as a Universal Studios' tour guide and later starred in commercials. Who knows maybe someday one of our graduated St. Edward's theatre students will become famous, like Clarke, and pay us an entertaining and rewarding visit.

THAT'S  
**SHOW  
BIZ!**



**MARY MOODY NORTHEN**  
**THEATRE**

# **THE MISER**

by **MOLIERE**

adapted by Miles Malleson

**FEBRUARY 17—MARCH 1**





## THE MISER

Cast

(in the order of appearance)

VALERE (in love with Elise).....	JAMES VENHAUS
ELISE (Harpagon's daughter).....	CHRISTIE ORTH
CLEANTE (Harpagon's son).....	DAVID SCOT
HARPAGON (the Miser).....	KEVIN COONEY
LA FLECHE (Cleante's servant).....	GARY G. BERGMAN, JR.
MASTER SIMON/SERVANT (a moneylender).....	JIM REMITZ
FROSINE (a scheming woman).....	CAROL VAN NATTA
JACQUES (Harpagon's servant).....	TOM LANDEN
FIRST SERVANT.....	SHARI GETZ
SECOND SERVANT.....	CHRISTAL NOLTE
MARIANE (in love with Cleante).....	KATHLEEN McCLAIN
JUSTICE OF THE PEACE/SERVANT.....	JON HAWKINS
CLERK TO THE JUSTICE/SERVANT.....	HEIDI STUDEBAKER
SEIGNEUR ANSELM/SERVANT.....	JOHN SPEARS
UNDERSTUDY TO HARPAGON.....	ARNOLD VILLAREAL

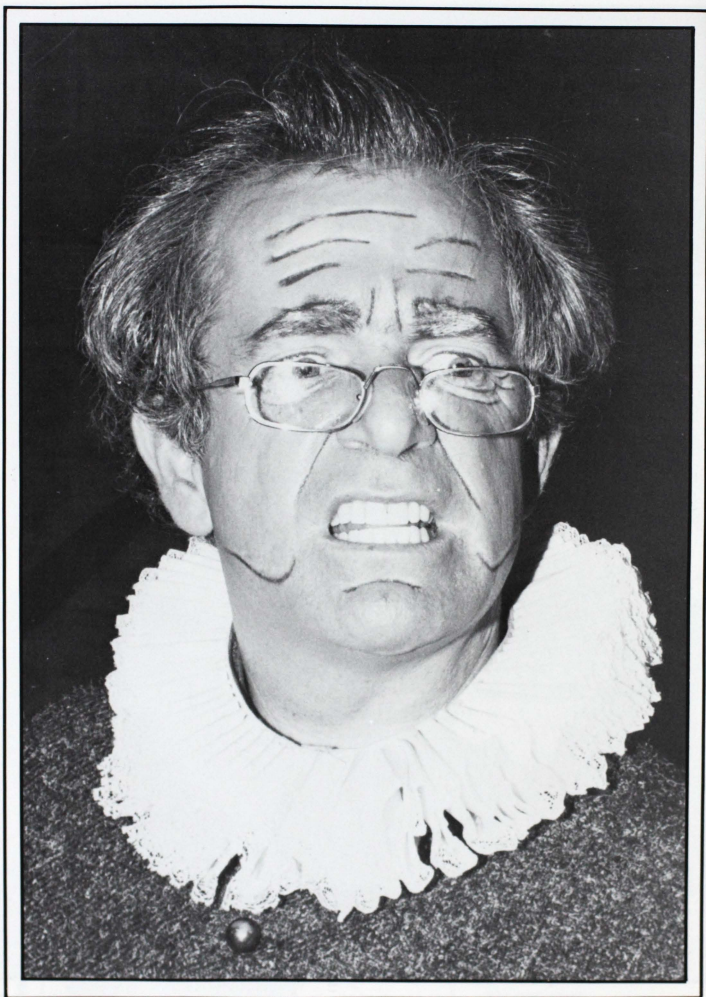


THE MISER, a classically hilarious farce by Moliere, began the Spring season off for the SEU theatre. The play was guest directed by actor/director Rodney Rincon, whose performance credits include stints at The Alley Theatre, the Houston Grand Opera, the New York Shakespeare Public Theatre and Julliard's American Opera Center.

THE MISER also featured a guest artist Kevin Cooney who is an accomplished actor in film, television and state. His movie credits include, "The Trip to Bountiful" and "North Dallas Forty." This production was truly an adventure to see, and filled with great talent.









**MARY MOODY NORTHEN  
THEATRE**

**THE  
MIRACLE  
WORKER**

by WILLIAM GIBSON

**MARCH 31—APRIL 12**



**St. EDWARDS  
UNIVERSITY**  
AUSTIN • TEXAS

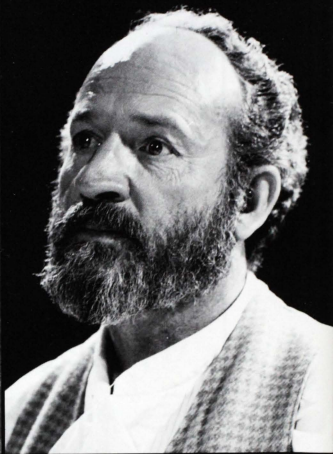




## THE MIRACLE WORKER

Cast  
(in order of appearance)

HELEN KELLER.....	ANA TORRES
MARTHA.....	MELITA MORGAN
PERCY.....	JAKOB EAVES
CAPTAIN KELLER.....	JIM FLETCHER
KATE KELLER.....	DIXIE SMITH
VINEY.....	DENISE ODOM
JAMES KELLER.....	MITCH BERRY
AUNT EV.....	KAREN URHBROCK
MILDRED KELLER.....	TAMARA CANUP
ANNIE SULLIVAN.....	JILL GILES
MR. ANAGNOS.....	ARNOLD VILLAREAL
BLIND GIRLS: SARA.....	KATI EAVES
CINDY.....	VALERIE BLYTHE
BEATRICE.....	KATHLEEN TODARO
ALICE.....	KRISTINA STEWARD
BELLE, the dog.....	TRAVIS
Voices from the past:	
Jimmie Sullivan.....	Shaun Eaves
Old Crones.....	Yvette Brun
	Lana Dieterich, Linda Eaves
Doctor.....	John Spears
Man's Voice.....	Charles Ney
Incidental Music by Jim Fritzler	





Ana Torres and Jill Giles held the lead roles of Helen Keller and her teacher, Annie Sullivan, in the story of the deaf and blind Helen struggling to understand language. The shows performances received standing ovations because of the emotion between teacher and student, as well as protective family and daughter. Together, the performances were entirely captivating.

Other noteworthy performances by Jim Fletcher and Dixie Smith as Captain and Kate Keller, as well as Mitch Berry's role as James Keller, provided the real life energy against which the story of Helen Keller could be told.









# SPECIAL PEOPLE



JIM CARROCCIO returns to St. Edward's University's Mary Moody Northern Theatre after a three year absence during which he served as Scenic Artist at the U.T. Performing Arts Center and established his own Design Studio here in Austin. He has designed the productions of *THE MOST HAPPY FELLA* and *GOOD NEWS!* for the Ziker Park Summer Musical and *THE SLEEPING BEAUTY BALLET* for U.T. His designs for *A MURDER IS ANNOUNCED*, *PRESENT LAUGHTER*, and *WHODUNNIT* at Zachary Scott Theatre center have earned him ACOT awards for Set Design, and his set for *COME BACK TO THE 5 & DIME JIMMY DEAN JIMMY DEAN* is nominated for this year's ACOT Award. He also designed ZSTC's production of *SEASCAPE* and toured with the show in England as Technical Director. This past year Jim received honor award in Fine Arts from the Austin Chapter of the American Institute of Architects.



BROTHER JERALD ENOS, is a theatre faculty member at St. Edward's and is a member of the Congregation of Holy Cross. Brother Enos is a graduate of U.C.L.A. with an MFA in Production Design. He has directed the MMN theatre production of *THE MUSIC MAN* and designed the lights for *BUS STOP*, *THE PRIME OF MISS JEAN BRODIE*, and *The Texas Catholic Sesquicentennial Pageant*. Prior to coming to Austin, Brother Enos worked on projects with M.G.M. and Universal Studios, the television productions of *HILL STREET BLUES* and *FAME*, along with touring companies of *4th STREET* and *CATS*. Following graduate studies he was involved with the Olympic Arts Festival as associate designer for visiting companies from Japan, Brazil, Holland, Poland, and China.



JIM FRITZLER received his BA from Hasting College in the double major of Drama-Speech, English Linguistics Education and came to the University of Texas at Austin to receive his MFA in Directing. Prior to this Jim was trained as a classical pianist under private instruction in Colorado and Nebraska. He has created compositions and sound designs for many theatre, dance and film productions from coast to coast including, most recently, *GATHERING*, a dance collaboration with Kay Braden, the premiere of the dance/performance piece in which he also acted and directed *SEVEN WERE HANGED* and the upcoming production at Live Oak Theatre in January of *THE BLOOD KNOT* which he will be directing.



SUSAN LOUGHRAN, beginning her eighth year at St. Ed's, brings a wealth of theatrical experience to her position as Artistic Director of the MMN Theatre. She received her B.A. from Webster University Theatre Conservatory in St. Louis and an M.A. from South-West Texas State University. As an actress she has worked throughout the U.S. and Canada, appearing in roles as diverse as Billie Dawn in *BORN YESTERDAY* and Olivia in *TWELFTH NIGHT*. Most recent directing credits include *DEATHTRAP*, *BORN YESTERDAY*, at the MMN, and *WHODUNNIT* for ZSTC. In addition to her work as Artistic Director, she teaches a variety of subjects at SEU, including acting, costume, and makeup.

ANN MEANS is a graduate of U.T. with an MFA in Costume Design. Ms. Means received her MA and BA with an emphasis in Acting and Oral Interpretation at S.W. Missouri State University, where she also understudied the role of MEDEA. Ann designed the costumes for U.T.'s production of OEDIPIUS REX. She was assistant Costume Designer for the film NOON WINE and has designed the costumes for numerous Austin Productions including EUBIE!, MARAT SADE, TERRA NOVA, and THE QUILTERS for which she received an Austin Circle of Theatres nomination.

MELBA MARTINEZ MISHLER is a St. Edward's faculty member and Business Manager for the MNN. Melba teaches Acting and Arts Administration. She holds a MA in Theatre from the University of Wyoming, where she received the Elbogen Graduate Teaching Award. She has also studied the "Lively Arts" in London, England through Ekerd College. Last summer, Melba appeared as Helga Den Dorp in the MNN production of DEATH-TRAP for which she received an ACOT nomination. She received the Austin Circle Of Theatres Best Actress Award in the role of Serafina in the Capitol City Playhouse production of THE ROSE TA-TOO.

BROTHER GERALD MULLER is beginning his ninth year at SEU as music director. During his 40 years as a Brother of Holy Cross, he has graduated from Notre Dame, received his Master's from VanderCook College of Music and worked with some of the finest choral conductors in the world. Last summer he went to Wales to study with two contemporary composers, Alun Hoddinott and William Mathias. He has written a hundred books for young readers including a biography of Martin Luther King, Jr. and presently sings with the Austin Choral Union.

MICHELE NEY is working towards a M.F.A. degree in design at U.T. She has studied Costume Design at Southern Methodist U. and the University of Illinois where she received a B.F.A. in Theatre. In 1982, she won the National Costume Design Award for her designs of Goldsmith's SHE STOOPS TO CONQUER. Last year, Ms. Ney was a SEU faculty member and designed the costumes for the production of THE MUSIC MAN and EL GRANDE DE COCA-COLA. She has received nominations from the Austin Circle Of Theatres for her designs for RUDDIGORE and PRIVATE LIVES.

CHARLES NEY is an assistant professor in theatre at SEU. He is currently working on his PH.D. from the University of Illinois. He received his MFA in Directing from Southern Methodist University in Dallas where he was given the Bob Hope Outstanding Graduate Student award. He received a BFA from Illinois Wesleyan University. The Manhattan Clearing House, a performing arts center in Dallas was founded by Ney in 1978. While there he conceived and produced Dallas' first Contemporary Dance Festival and directed the Southwest premier of MISS MARGARITA'S WAY. Other directing credits include, TURCARET, ON GOLDEN POND, THE MAIDS, THE GOOD DOCTOR, THE FATHER, THE PRIME OF MISS JEAN BRODIE, and EL GRANDE DE COCA-COLA.

SARA MEDINA-PAPE is the Costumer for St. Edward's MMN. She has studied at U.T. Austin where she received an MFA in costume design and a BA in Political Science. Sara has designed the costumes for productions such as, RAGS TO RICHES and BYE BYE BIRDIE for U.T., and supervised the construction of the designs for the Paramount production of DRACULA. Her movie credits include work as Wardrobe Designer for the Austin based film BLOOD SIMPLE and as an Assistant Designer for NOT FOR YOU.

RENATA POWERS SANFORD has been a member of Actor's Equity since seventeen and has performed in many Broadway shows- HOW TO SUCCEED IN BUSINESS, PLEASURES AND PALACES, SKYSCRAPER and SWEET CHARITY. She has worked with Bob Fosse, Michael Kidd, and other distinguished choreographers. Ms. Sanford has choreographed LIT ABNER, MUSIC MAN, CAMELO, ROAR OF THE GREASEPAINT, BOYFRIEND, and HOW TO SUCCEED IN BUSINESS. She is an SEU faculty member and teaches point for BALLET AUSTIN.







Guest actor Brian Patrick Clarke and our theatre owner Susan Loughran.



Chairman of Humanities ... Anne Crane, Associate Professor.



Brian Patrick Clarke

Brian was born in Gettysburg, Pennsylvania and spent his early years in Maryland, New York and North Carolina. His interest in acting emerged when he attended Mineola School of the Theatre in New York. At 15, Clarke moved to Shaker Heights, Ohio, graduated in the top five percent of his class and earned the distinction of being a National Merit Scholarship Finalist. Yale awarded Clarke an academic scholarship and his B.A. was complete in 3½ years.

Later, he obtained a job as a tour guide at Universal Studios and contacted agent Nina Blanchard, who signed him within the hour. Clarke continues to work with acting coach Vincent Chase. By 1979, his career was decidedly going to be acting and he soon became a regular in *EIGHT IS ENOUGH* and *DELTA HOUSE*; co-starred

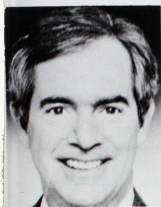
in such TV movies as *THE GRACE KELLY STORY* and *THE YEAGERS*; and guest-starred in such weekly series as *ONE DAY AT A TIME*, *FAME*, *KING'S CROSSING* and others.

From January 1983 through December 1985, Brian was a star in ABC's *GENERAL HOSPITAL*, as Grant Andrews, a former enemy agent turned good guy. Viewers were amazed at Brian's versatility and talent when he began a second role on *GENERAL* — Grant Putnam, a psychotic killer.

One of Brian's favorite projects is his involvement with *FIND THE CHILDREN*, an organization founded by ADAM producer Linda Otto, which aids parents in their search for missing children.



## GUEST ARTIST KEVIN COONEY



ation was the Houston Shakespeare Company, Theatre Under the Stars, and Dean Gross Diner Theatre.

Kevin has just finished filming **BLOOD RED** with Eric Roberts and Dennis Hopper, a picture which will be released this summer by Hemdale. Last year he was featured in **YURI NOSENKO**, KGB a film starring Tommy Lee Jones produced by the BBC and aired in the U.S. on HBO and co-starred in a pilot for CBS, D.C. COP. Other film credits include **NORTH DALLAS FORTY**, **DEADLY BLESSING**, **HOT WIRE**, **NORTON FOOTE'S LOVELY FILM** and **THE TRIP TO BOUNTIFUL**.

Kevin's television credits include **THE GIRLS IN THE OFFICE**, **ATTACK ON TERROR**, and a starring role in **THE LONE STAR BAR AND GRILL**, a miniseries for Showtime. Last year he starred in a production of **CURSE OF THE STARVING CLASS**. His other stage credits include the National Tour and Broadway production of **THE BEST LITTLE WHOREHOUSE IN TEXAS**, as well as **SAME TIME NEXT**

**YEAR, TWELFTH NIGHT, THE MUSIC MAN, THREEPENNY OPERA, MY THREE ANGELS, BLACK COMEDY**, and many more.

Kevin lives with his wife and three sons in Katonah, N.Y. Mr. and Mrs. Cooney are currently collaborating on a screen play based upon her critically acclaimed novel, **THE 25 CENT MIRACLE**, which was chosen as one of the Best Books of 1986 by the **SCHOOL LIBRARY JOURNAL**.

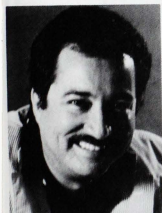
**KEVIN COONEY** is a member of the Actor's Studio and received his Masters in Drama from the University of Houston. He came to St. Edward's University to reunite with former colleague, Rodney Rincon. Both artists attended the University of St. Thomas in Houston and participated in the UST Drama Club, which was instrumental in developing UST's first Theatre department. Both Kevin and Rodney had the unique opportunity of studying with Charles Krohn and Sam Havens. Their basic training ground after gradu-

## GUEST DIRECTOR RODNEY RINCON

He has also been on the production staffs of The Julliard School and the New York Shakespeare Festival Public Theatre, a script writer for Public Television's **SONRISAS**, Production Stage Manager for the University of Texas Performing Arts Center and Performing Arts Supervisor for the Austin Parks and Recreation Department.

As an actor, he has performed with such prominent companies as the Alley Theatre, the Houston Grand Opera, the Odessa Shakespeare Festival Public Theatre, the American Opera Center, the American Place Theatre, and most recently, the Mary Moody Northern Theatre.

Film credits include **SHORT EYES**, **WITCHFIRE**, **PRAY FOR DEATH**, and **THE LEGEND OF BILLIE JEAN**. He is also a regular on the current PBS TV series, **THE ADVENTURES OF SHERLOCK JONES AND PROCTOR WATSON**.



**RODNEY RINCON** is a native of Houston, Texas where he began his theatrical career as a drama student at the University of St. Thomas. He has been a staff director of Plays For Living in Houston, an acting teacher at the Alley Theatre Merry-Go-Round School and stage manager for the Houston Grand Opera, The New York Shakespeare Festival, and the Paramount Theatre. As a stage manager, he has assisted such directors as Frank Corsaro, Tito Capobianco, Sarah Caldwell, James Lucas, Patrick Bakman, Walter Ducloux and Paul Baker. His own directing credits include **THE CARETAKER**, **THE CRADLE WILL ROCK**, **CAMELOT**, **YOU'RE A GOOD MAN CHARLIE BROWN**, **THE GREAT WHITE HOPE** and **STREAMERS**.

The St. Edward's University Faculty and Students would like to express their great appreciation and deepest thanks to Guest Artists, Brian Patrick Clarke and Kevin Cooney, and Guest Director, Rodney Rincon for making our year a successful and special one.

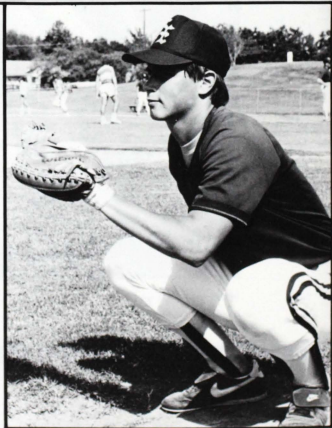
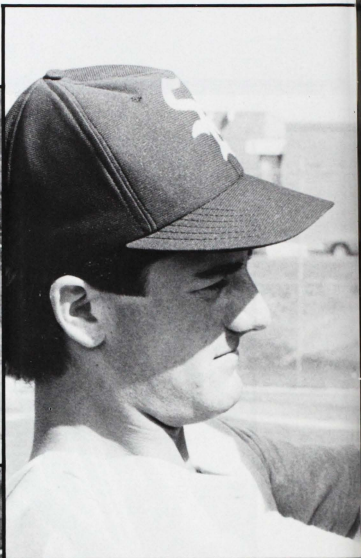
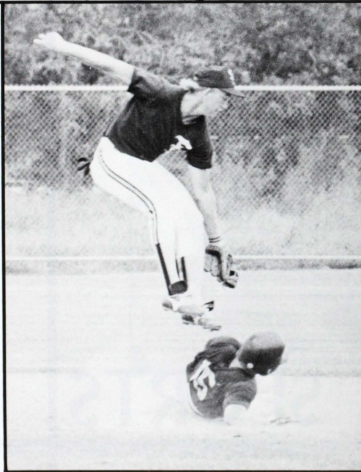
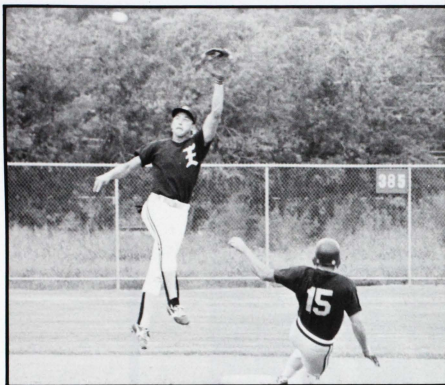


Photo by TODD HARTMAN

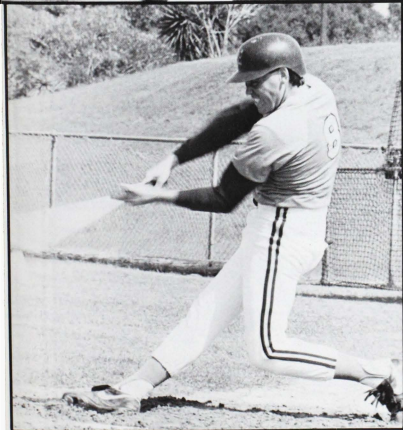
**SPORTS**

# HILLTOPPERS

All Baseball Photos By  
Todd Hartman







# OPPONENT      OPPONENT SEU

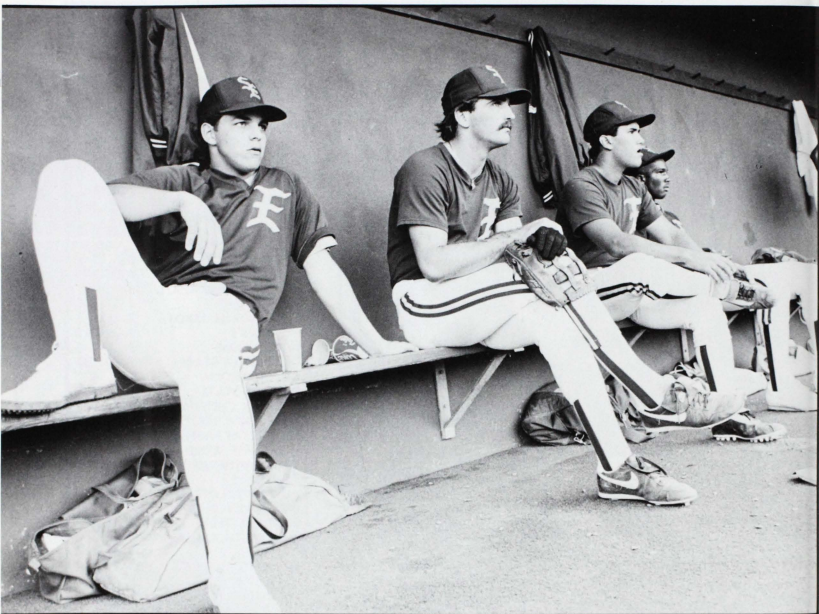
RICE	6- 4	1- 3
SOUTHWEST TEXAS STATE	6- 4	2- 5
SOUTHWEST TEXAS STATE	7- 5	6- 5
CENTRAL ST. OKLAHOMA	2- 5	5- 9
PAN AMERICAN	5- 9	4- 3
PAN AMERICAN	8- 5	7- 6
BAYLOR	2- 6	1- 0
CONCORDIA	10	16
SOUTHWESTERN	8	12
TEXAS TECH	5- 8	3- 3
HOUSTON	6- 2	2- 0
KANSAS BENEDICTINE	10- 5	3-10
N. DAKOTA STATE	1	12
U. OF DUQUQUE	6	7
CONCORDIA	1- 2	9- 5
S.W. ST. OF MINNESOTA	6	11
OKLAHOMA	8	7
U. OF NORTH DAKOTA	2- 0	12- 7
ST. MARY'S	2- 3	0- 2
NOTRE DAME	3	5
MO. VALLEY STATE	3- 6	5-10
S.E. OKLAHOMA	6	4
EMPORIA STATE	4-11	2- 0
LUBBOCK CHRISTIAN	12- 8	5- 1
EAST TEXAS BAPTIST	16- 6	3- 8
EAST TEXAS BAPTIST	7	15
INCARNATE WORD	7- 6	9- 8
TEXAS LUTHERAN	6	7
ST. MARY'S	4	7
HUSTON-TILLOTSON	6	13
SAM HOUSTON STATE	2- 9	4-10
SOUTHWESTERN	6	13
TEXAS LUTHERAN	4- 3	0- 4
DALLAS BAPTIST	6- 9	4- 4
HUSTON-TILLOTSON	0- 8	7- 4
MARY HARDIN BAYLOR	7- 4	9- 8
MARY HARDIN BAYLOR	6	5

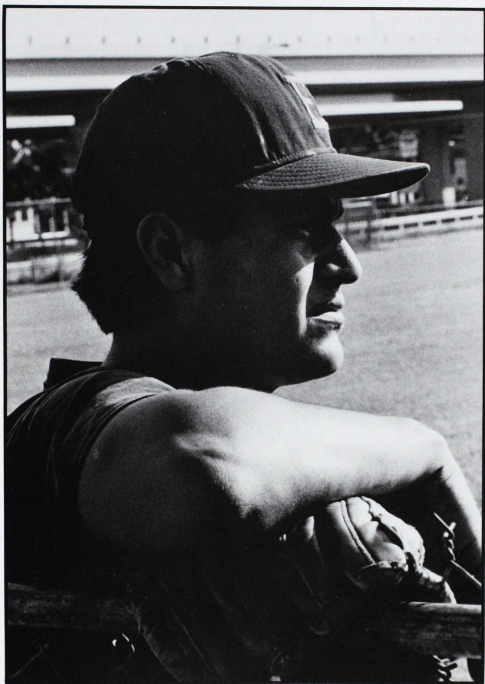
## Post Season Play — District IV Tournament

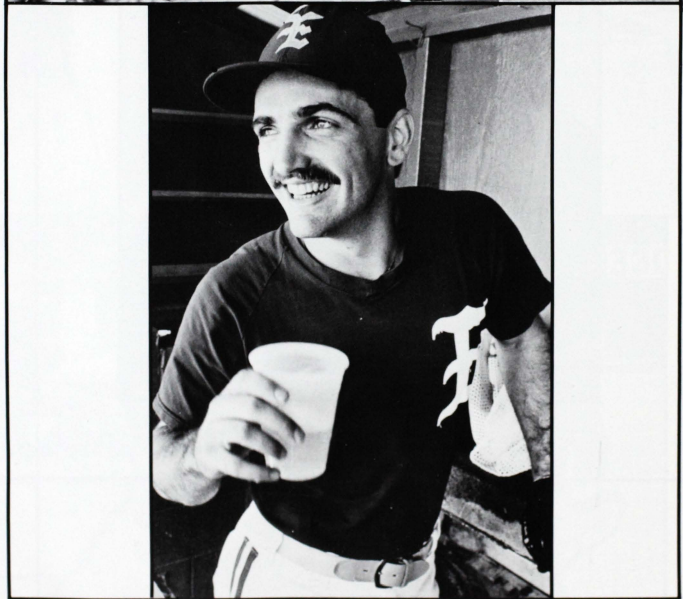
SOUTHWESTERN	4	6
SOUTHWESTERN	10-20	2-17

FINAL RECORD — 31-31-1 ---500

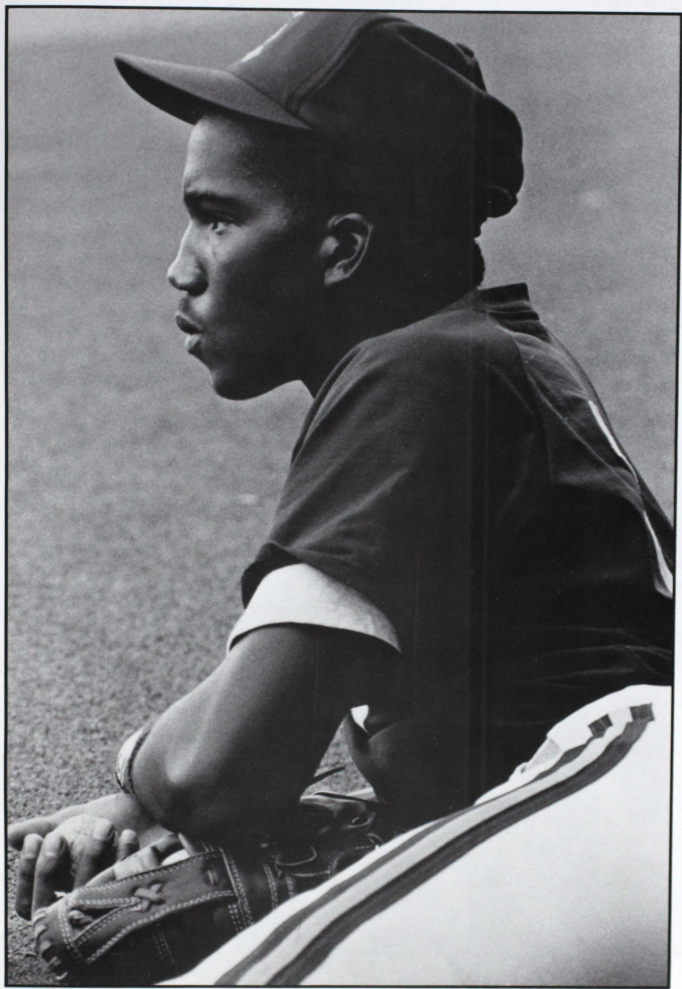






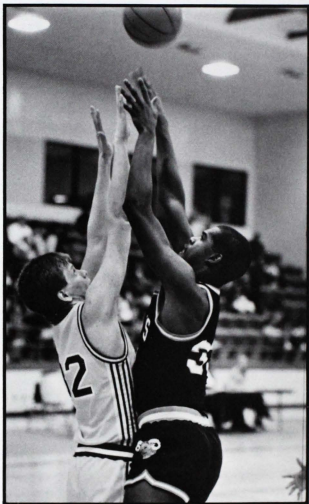
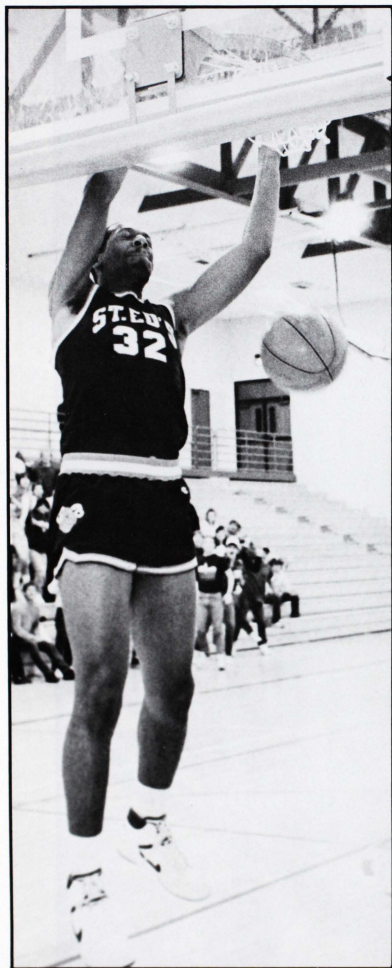






# ST. EDWARD'S UNIVERSITY MEN'S BASKETBALL

*photos by DAMIAN MORGAN*



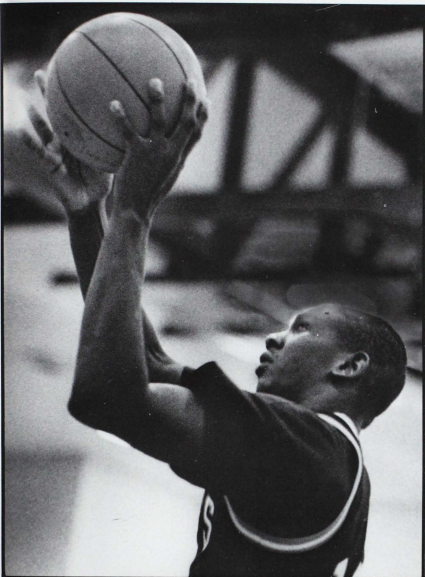


photo by JEFF WILSON

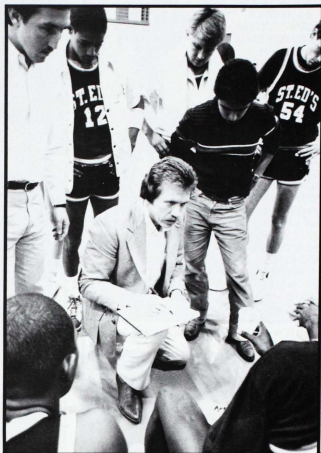


photo by  
JEFF  
WILSON

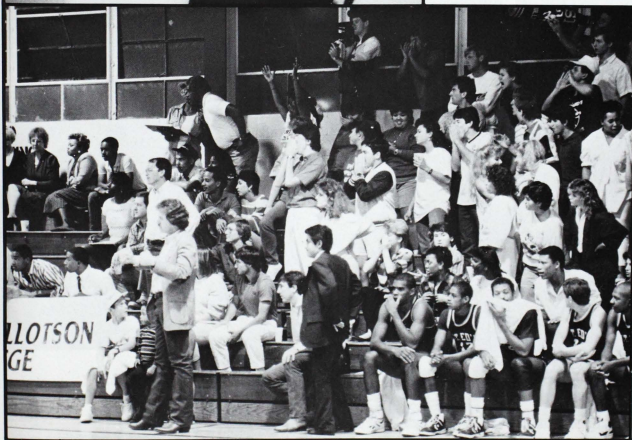


photo by  
DAMIAN  
MORGAN



1986-1987 BASKETBALL SCORES

OPPONENT	OPPONENT	SEU
INCARNATE WORD	82	85
SOUTHWESTERN	82	84
CONCORDIA	100	92
UNIVERSIDAD de las AMERICAS	63	79
AUSTIN COLLEGE	64	67
TARLETON STATE	55	56
CONCORDIA	101	108
STEVEN F. AUSTIN	70	67
TARLETON STATE	71	81
TEXAS A&I	68	75
SOUTHERN NAZARENE	95	84
OKLAHOMA CHRISTIAN	98	92
MT. MERCY	79	82
INCARNATE WORD	76	94
TEXAS A&I	52	53
SOUTHWESTERN	60	68
ST. MARYS	67	76
SCHREINER	72	81
TEXAS LUTHERAN	68	93
MARY HARDIN-BAYLOR	71	81
UT ARLINGTON	87	84
EAST TEXAS BAPTIST	104	105
HUSTON TILLOTSON	77	84
CONCORDIA	89	114
SCHREINER	84	83
ST. MARYS	88	83
TEXAS LUTHERAN	65	81
MARY HARDIN-BAYLOR	67	75
EAST TEXAS BAPTIST	73	111
HUSTON TILLOTSON	83	107
SOUTHWESTERN	81	68
ST. MARYS	79	68
SOUTHWESTERN	75	59

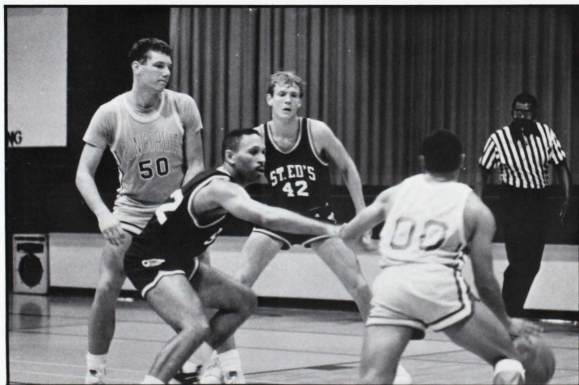


photo by  
STEVE JACKSON



photos by  
JEFF WILSON





photo by DAMIAN MORGAN

**SINGLE GAME HIGHS (INDIVIDUAL)**

Most Points: 34 by Ronnie Smith vs. Huston Tillotson  
 Most F.G.: 14 by Denell Davis vs. Austin College  
 Most F.T.: 10 by Jeff Applewhite vs. Concordia  
 Most Rebounds: 20 by Denell Davis vs. Oklahoma Christian  
 Most Assists: 9 by Dwight Whittington vs. Huston Tillotson



photo by AL PUENTE

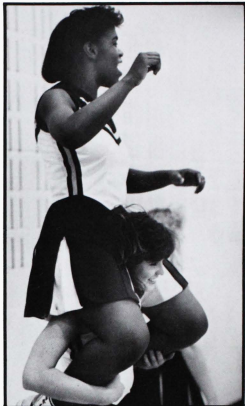


photo by JEFF WILSON

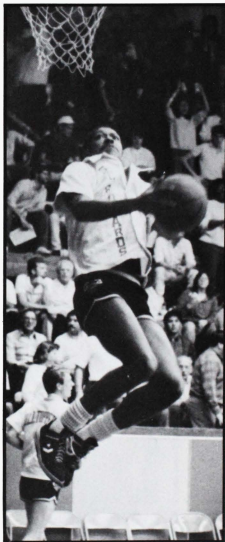


photo by STEVE JACKSON



photos by AL PUENTE





photo by STEVE JACKSON

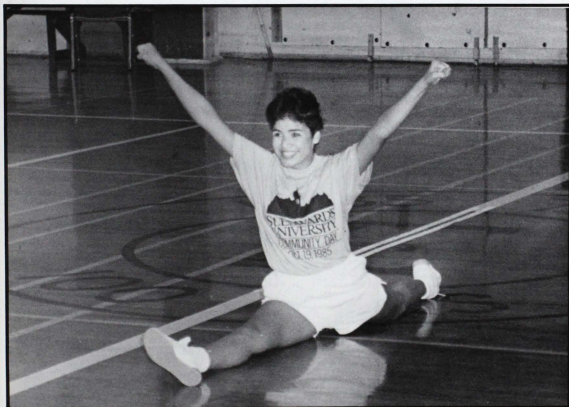


photo by AL PUENTE



photo by STEVE JACKSON

photo by LYNN RUSSELL



# WOMEN'S BASKETBALL

## 1986-1987 WOMEN'S BASKETBALL SCORES

OPPONENT	OPPONENT	SEU
McMURRY	55	65
SOUTHWESTERN	59	67
AUSTIN COLLEGE	67	76
TARLETON STATE	82	79
SCHREINER	79	71
TRINITY	46	79
SWTSU	84	74
TRINITY	37	75
TEXAS WOMEN'S		
UNIVERSITY	54	95
AUSTIN COLLEGE	51	98
UNIVERSITY OF		
THE SOUTH	48	79
TARLETON STATE	72	92
CONCORDIA	69	80
ST. MARY'S	82	61
SCHREINER	60	68
TLC	61	72
MARY HARDIN BAYLOR	68	70
SOUTHWESTERN	68	60
EAST TEXAS BAPTIST	79	75
HUSTON TILLOTSON	71	69
McMURRY	67	73
EAST TEXAS BAPTIST	66	68
TEXAS WOMEN'S		
UNIVERSITY	50	66
MARY HARDIN BAYLOR	61	76
ST. MARY'S	86	72
TLC	67	89
CONCORDIA	63	79
HUSTON TILLOTSON	72	78



photo by JEFF WILSON



photo by JEFF WILSON



photo by STEVE JACKSON





# 'TOPPERS GO!



photos by JEFF WILSON





photo by JEFF WILSON

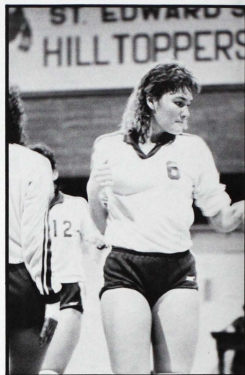


photo by AL PUENTE

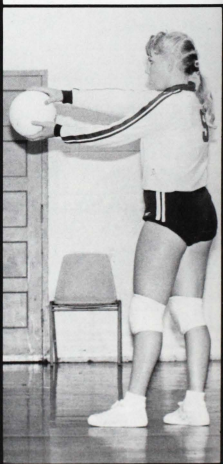
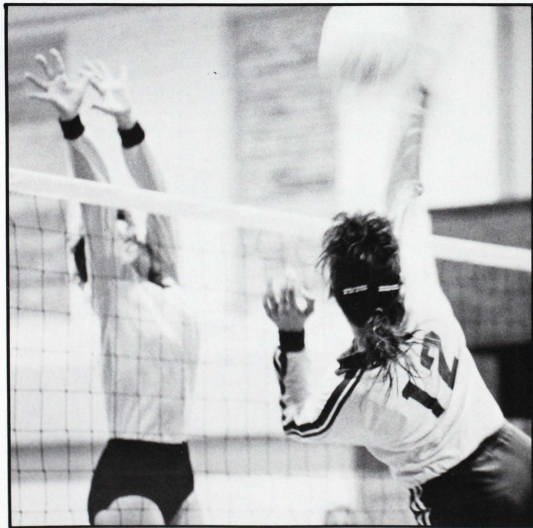


# ST. EDWARD'S VOLLEYBALL

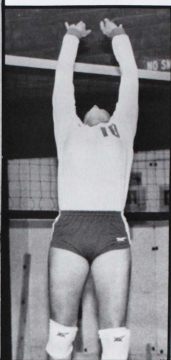
<u>OPPONENT</u>	<u>MATCH—(W/L)</u>	<u>GAME SCORES (SEU SCORE FIRST)</u>
HUSTON-TILLOTSON	W	15-13/15-8/15-5
SOUTHWESTERN UNIVERSITY	L	15-6/15-13/12-15/15-17/12-15/
MARY-HARDIN BAYLOR	W	15-3/15-8
BISHOP COLLEGE	W	11-15/9-15/15-6/18-16/15-3
MARY-HARDIN BAYLOR	W	15-6/14-16/11-15/15-11/15-10
S.F. AUSTIN STATE UNIVERSITY	W	16-14/12-15/15-8
TRINITY UNIVERSITY	W	15-8/15-12
SOUTHWEST TEXAS STATE U.	L	6-15/6-15/8-15
SCHREINER COLLEGE	W	15-13/13-15/12-15/15-7/15-6
CONCORDIA COLLEGE	L	5-15/18-16/12-15
EAST TEXAS BAPTIST U.	W	15-6/15-8/15-12
TEXAS LUTHERAN COLLEGE	L	12-15/15-6/9-15/10-15
HUSTON TILLOTSON	W	15-9/15-9/15-8
ANGELO STATE UNIVERSITY	L	8-15/5-15/6-15
SOUTHWESTERN UNIVERSITY	L	7-15/12-15/12-15
ST. MARY'S UNIVERSITY	L	4-15/15-8/14-16/12-15
MARY-HARDIN BAYLOR	W	16-14/15-6/16-14/11-15/15-13
TRINITY UNIVERSITY	W	15-9/15-7/15-7
TEXAS LUTHERAN COLLEGE	L	5-15/14-16/9-15
CONCORDIA COLLEGE	L	6-15/7-15/13-15
ST. MARY'S UNIVERSITY	W	15-5/15-17/15-6/15-10
SCHREINER COLLEGE	W	15-9/15-5/15-3
EAST TEXAS BAPTIST U.	W	15-3/15-4/15-1
SOUTHWESTERN UNIVERSITY	L	9-15/15-13/13-15/12-15

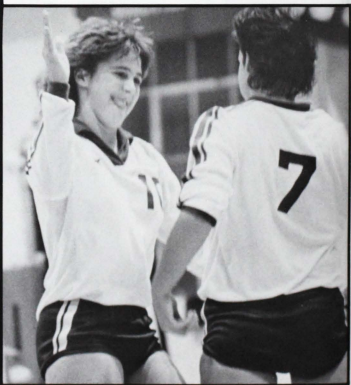
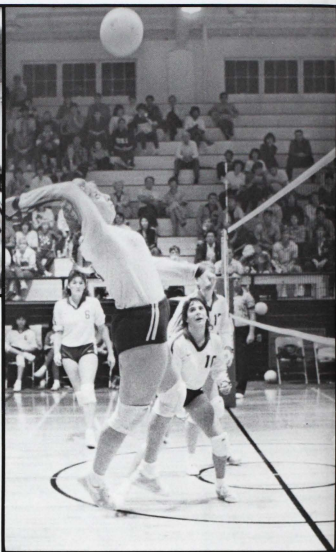


all volleyball photos by DAMIAN MORGAN





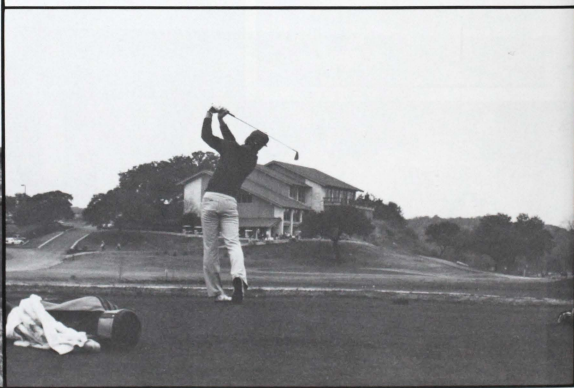
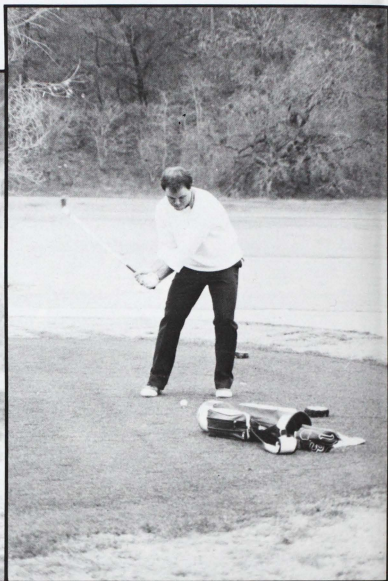
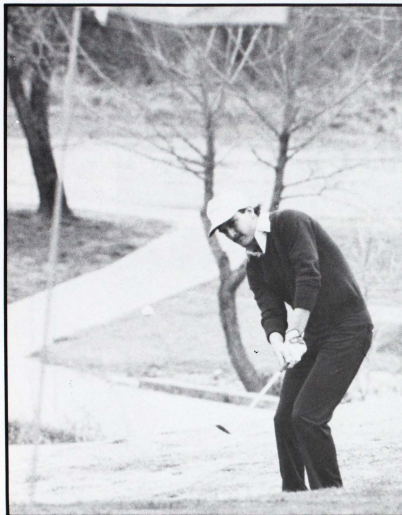






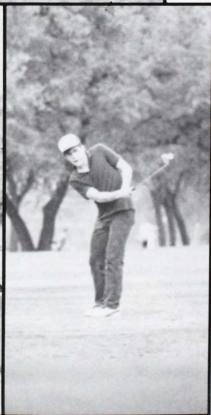
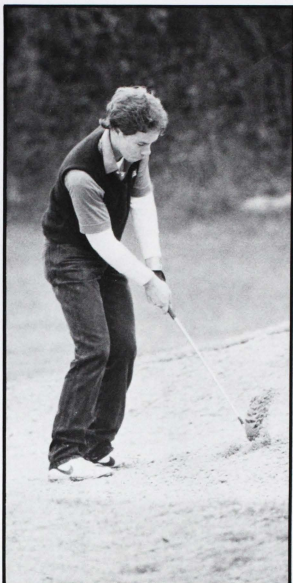
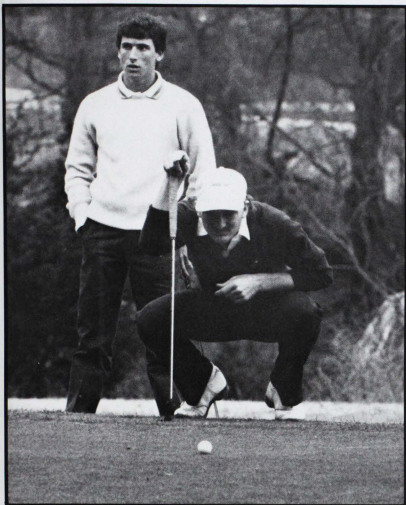


# GOLF



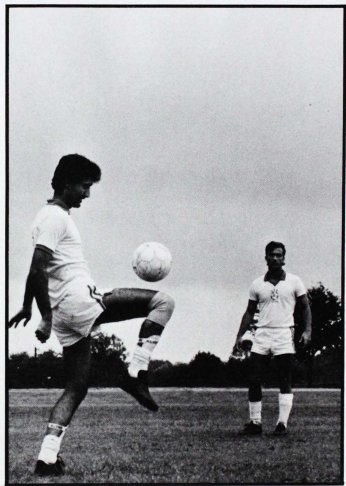
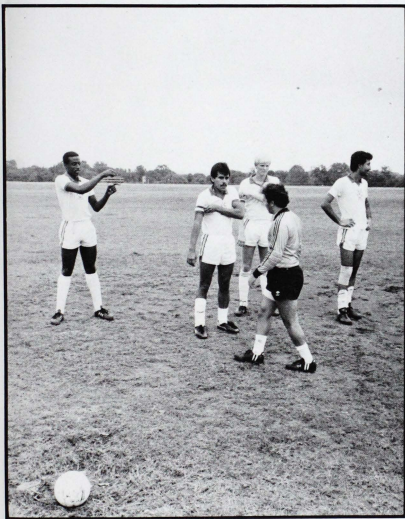


*all golf photos by STEVE JACKSON*

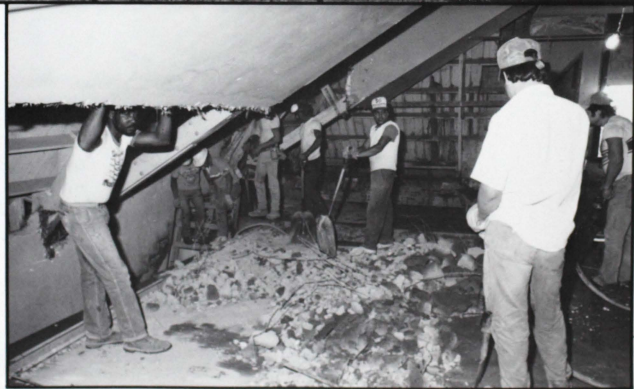


# SOCCER





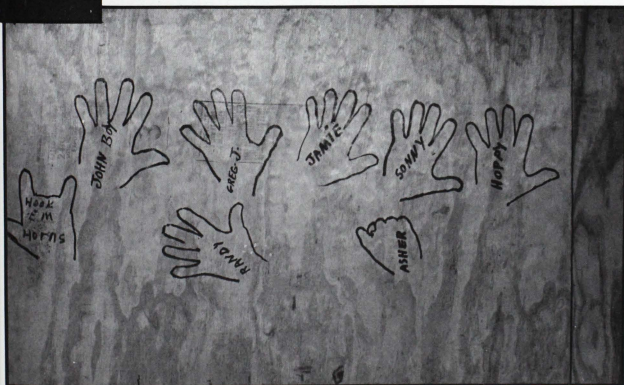




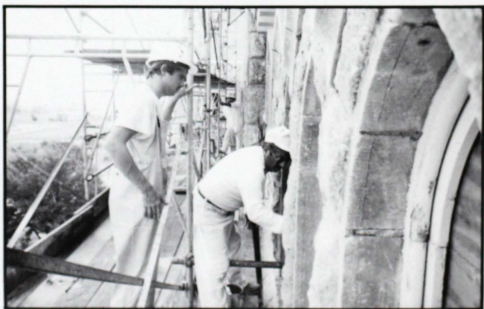
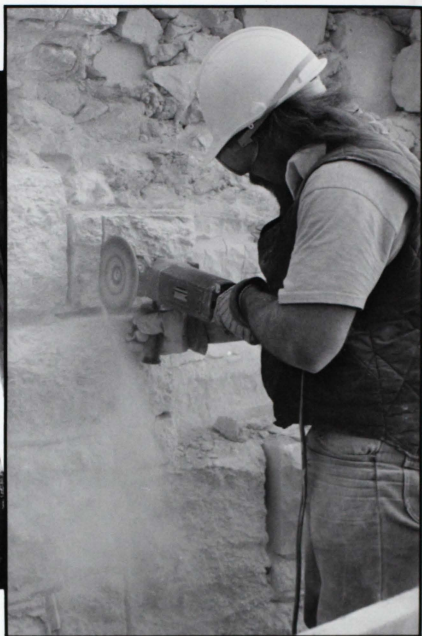
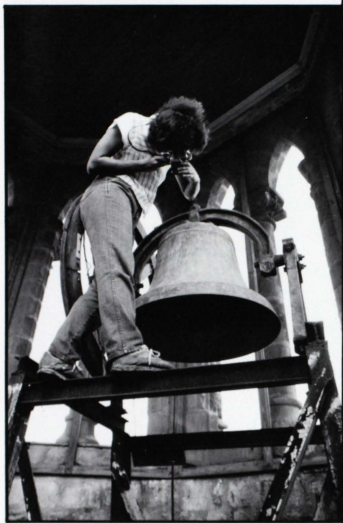


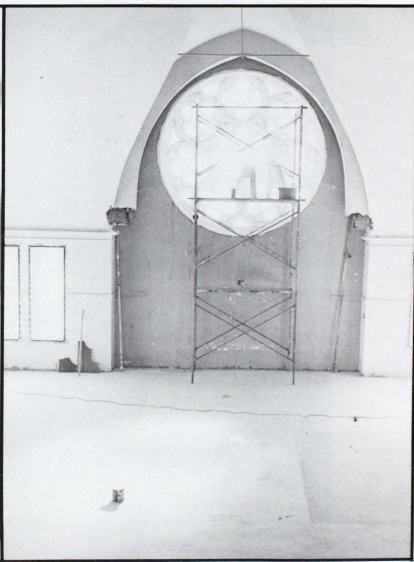


THANK YOU TO EVERYONE  
WHO WORKED TO  
OPEN OUR NEW DOORS

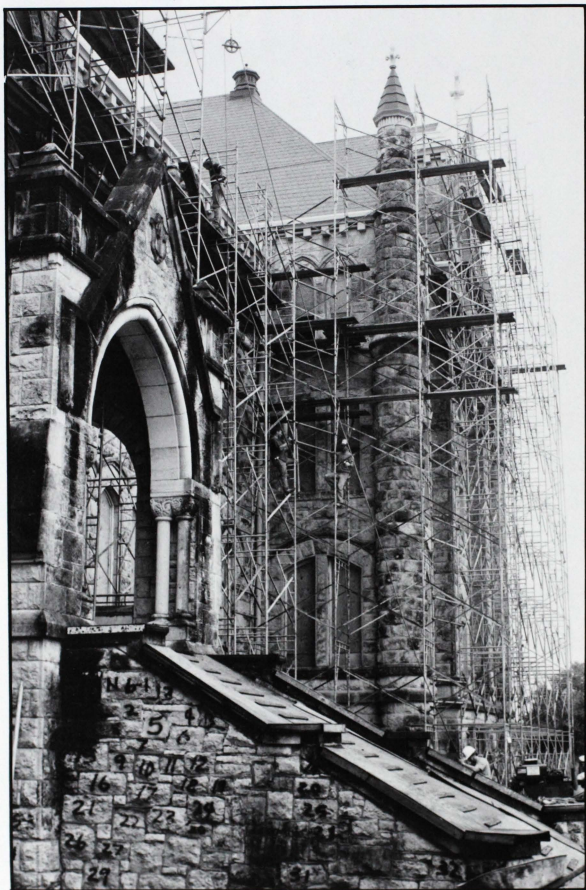


*thank you to JIM GONZALEZ for  
his main building photos.*

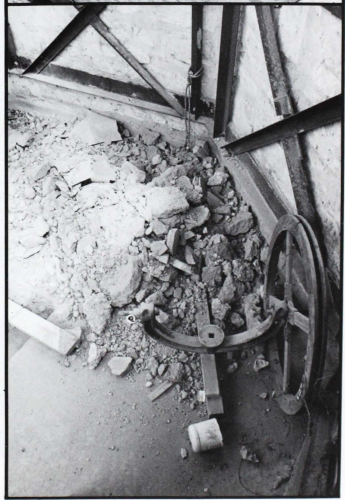
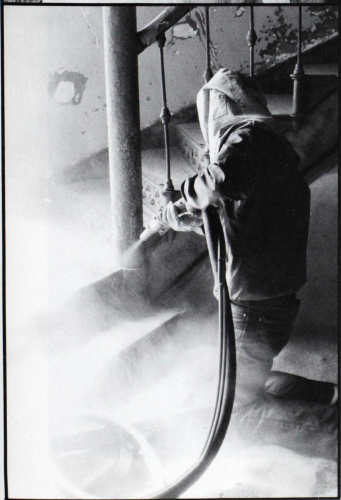
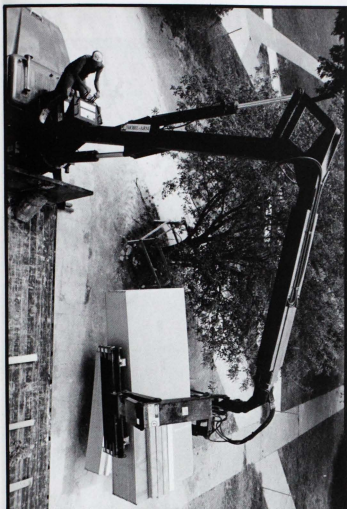




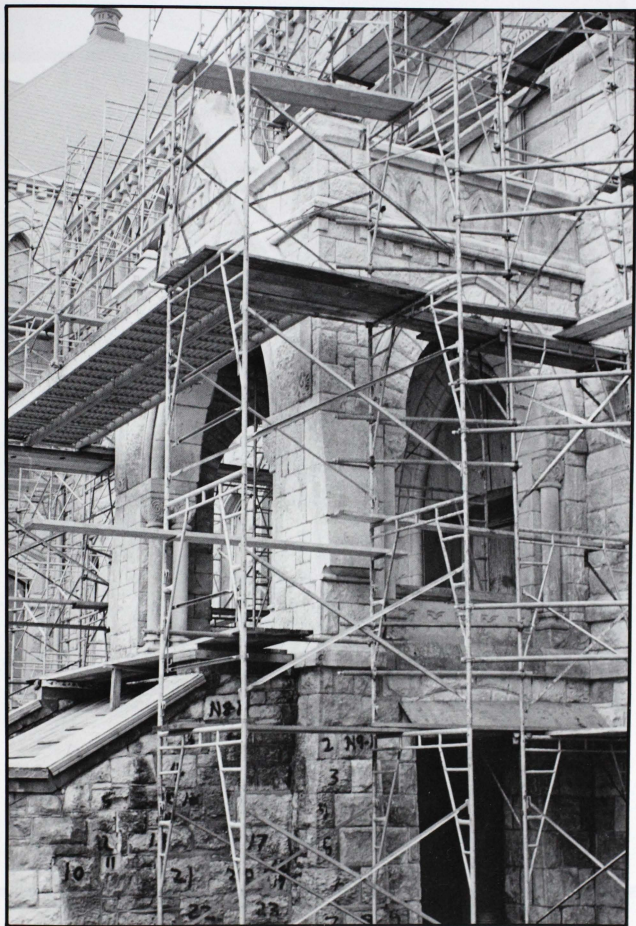


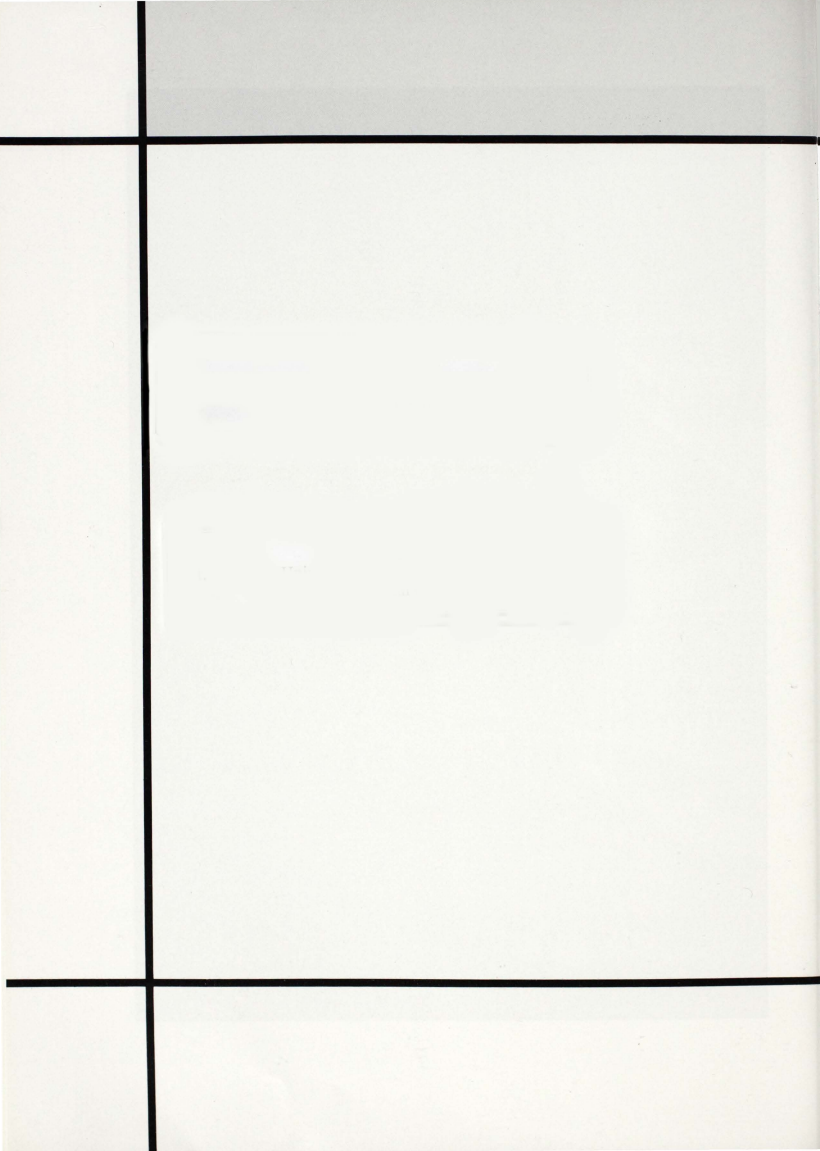














# ORGANIZATIONS



## ALPHA CHI, HONORARY SOCIETY

*Photo by T.J. MARSHALL*



## DATA PROCESSING MANAGEMENT ASSOC.

*Photo by STEVE JACKSON*





## PHOTO - SOCIETY

Photo by  
MICHELE  
CAMPBELL

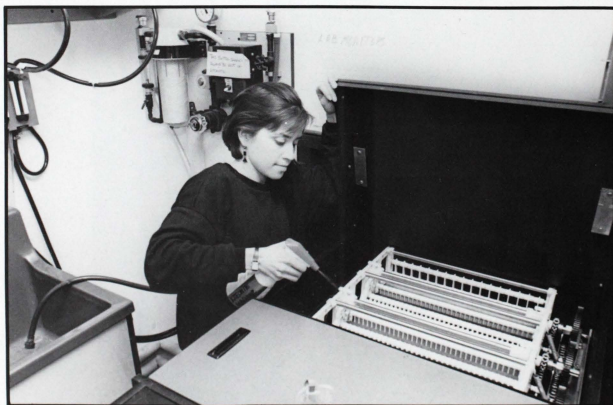


Photo by JEFF WILSON



# T A E K W O N D O



Photos by DAMIAN MORGAN

# TOP PERS



**WOMEN'S BASKETBALL**



**MEN'S BASKETBALL**

*Photos by DAMIAN MORGAN*



## CROSS - COUNTRY TEAM

Photo by  
DAMIAN  
MORGAN



## GOLF TEAM

Photo by STEVE JACKSON





SOCCER



VOLLEYBALL

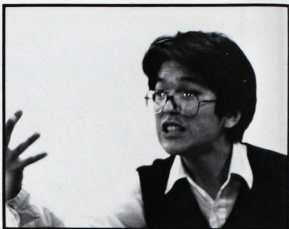




## ALPHA PHI SIGMA



## STUDENT LEADERSHIP RETREAT A FUNCTION OF SAC



Photos by JEFF WILSON

Community musicians, organized by Jeff Flag, practiced swing and symphony music in the Carriage House twice a week this last year. Jeff Flag, and the band members, which he helps to organize, have one thing in common, a passion for music. Both swing band and symphony were played, and all who play instruments were encouraged to attend. The rehearsals were informal, and all invited to attend.

The driving force behind the Swing Band is Jeff Flag, 42. After receiving a bachelors degree in music from Boston University, he spent a little over four years in the U.S. Navy. At that time, Jeff played in a Navy swing band, and it is that experience which gave him the format he uses today.

Six years ago, he came to Austin, and, as the city grew he saw the greater need for community based music. Four years have passed since Flag started the Swing Band, while the Symphony is still relatively young in only its second year. This was the first for both at St. Edward's.

While the Symphony is under a Board of Directors, the Swing band is Jeff's baby. He acts as manager and musical director and Alto Sax player all at once. He also plays the oboe in the Symphony Orchestra, but Swing is his main interest.

Swing is more commonly known as Big Band Music, and was popular as long as 50 years ago. It is a type of music most greatly influenced by jazz. The Workshop repertoire includes tunes by Count Basie, Benny Goodman, Artie Shaw and Tommy Dorsey. In general, the band plays stock pop tunes in common arrangements from the 30's, 40's, and 50's.



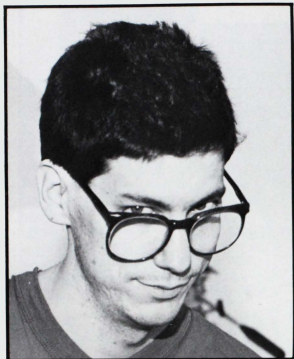
## THE CARRIAGE HOUSE: IT'S SWINGIN'!





YEAH !

## PUBLICATIONS?



Future: Jeff Wilson, mild-mannered veteran of a large metropolitan daily. Wilson became famous after breaking the story that the gun used by Bernard Goetz against his subway assailants was in fact supplied by Col. Ollie North. Through the mysterious Mr. Gobubafar, the former Ali of Buba.

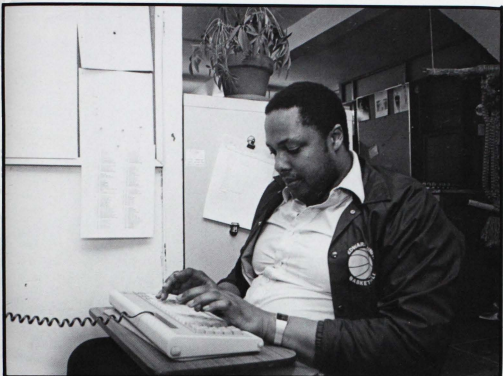


Rebekah E. Morris: A woman who became America's most famous leader after publishing her first book, "We're supposed to be a Melting Pot. DAMIT." Which rocketed her to international respect, a Nobel Peace Prize, and a top of the line jet black, genuine Maytag washer and dryer. When at the awards ceremony for her second best seller, "100 Ways to Make Love Without Guns" she turned to the cameras and said, "Now see Ollie. Isn't that easy?"

T.J. Marshall: Won thousands of dollars with a self portrait photo, entered in the Gentle Ben Grizzly Adams look-a-like contest. He then ran off to Hawaii to become a surfer and diver. While diving, under cover for McGarrett of 5-0 he discovered a million tons of rusty bullets, AK47's, and silk worms (Not to be confused with the Silkworm missile) hidden in a secret under water vault, identified only with a tag that said, "Happy Birthday Ollie", Love Bill Casey".







Vincent Leo Chives: Vincent mysteriously disappeared for twenty-five years from family and friends, reappearing just recently as Captain of the S.S. Purple Skies, the yacht which finally returned the America's cup to America from Roughions. He is now planning to write a book called "How Ollie made a Sailor Outa Me". When asked how he'd spent the past twenty-five years he replied, "There's lot's of peaches out there, and lots of hungry mouths to feed."



Lief Anderson and Robert P. Ross: The both of these men created their own Publishing Company, and gained the best of the best-sellers under their publication. They get along well in their partnership, however Lief is always fighting for all the credit, saying "I'M the brains of this company." It was learned yesterday that the two had been arrested for publishing training manuals for the contras, such as, "Remaining Alert on Your Siesta", "How to be the Best Dressed Contral", and "Games to Play When Things Are Slow at the Front". When in front of the Judge, Lief exclaimed, "He's the brains, he's the Brains".

Kirstin A. Griffin: Is still trying to finish the 87 yearbook, (that's 1987). She won acclaim as the subject of her friend Rebekah E. Morris' block-buster novel "Somebody's Gotta be the Missing Link--DAMIT". She is now planning on writing and starring in her own Opera, called "They Can Act. Now Teach Those Government Officials How To Sing". -Maybe she'll be famous someday .....





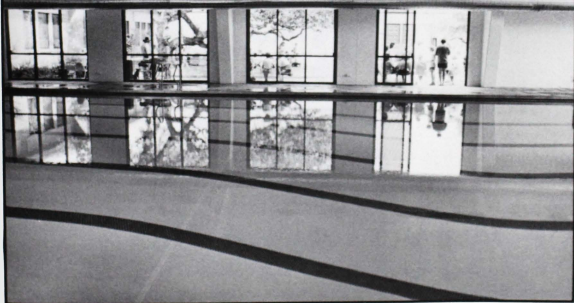
Photos by T.J. MARSHALL

# OLD MAIN DEDICATION

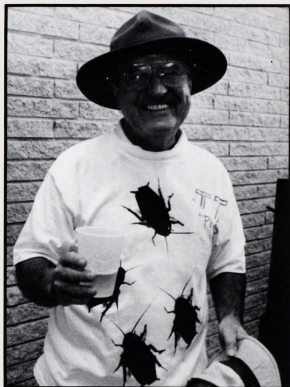




*Photos by DAMIAN MORGAN*



# PEOPLE



PHOTOS by DAMIAN MORGAN



**FRESHMAN**

Luisa Alonso  
Yolanda Alonzo  
Alonso Alvarado  
Arcadio Alvarado



Terri D. Anspach  
Marie C. Arnold  
Andrea M. Barr  
Robin Bell

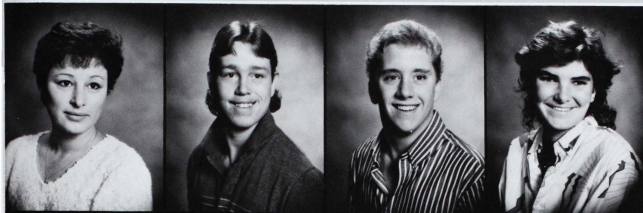


Rosi Briones  
Casilda G. Cagle  
Gayelle Caldwell  
Noe Carrillo



Shawna Carter  
Norma L. Castro  
John Coleman  
Mary Contreras





*Cindy Cornell  
Tom Cronin  
Clinton E. Cummings  
Dawn Darilek*



*Mari B. Decanini  
Michelle deVbarrondo  
Barbara Ann Eckhart  
Elizabeth Elizalde*



*Dana Fischer  
Deana Fischer  
Cynthia Flores  
Ma del Rosario Flores*



*Anna Fritch  
Melissa Garcia  
Judy Garza  
Francisco Garza*



Photos by T.J. MARSHALL

Christine Gillespie  
Nathan Gillon  
Edella Gonzalez  
Elsa G. Gonzalez



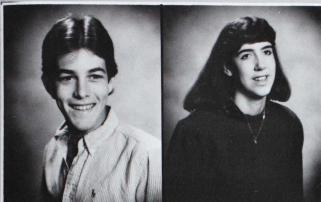
Juan Carlos Gonzalez  
Missy Gonzalez  
Sandra Gonzalez  
Esmer Guajardo



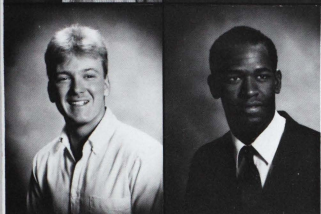
Alanzo Gutierrez  
Katherine Hammer  
Maria Teresa Hernandez  
Jaime Herrera



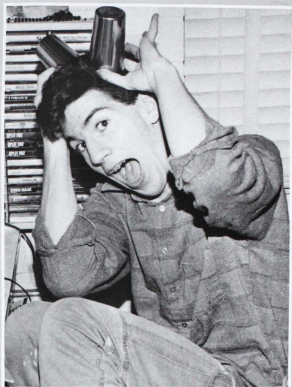




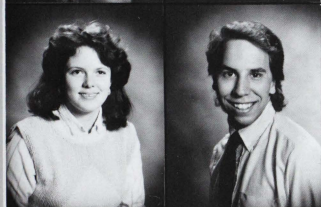
*John J. Hofstetter II  
Martha Hynes*



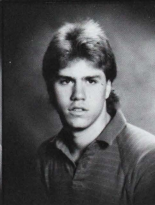
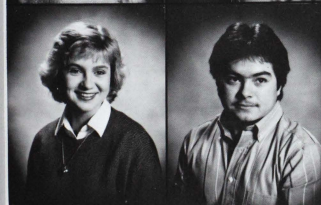
*Paul Jenschke  
Gordon Johnson*



*Photo by T.J. MARSHALL*

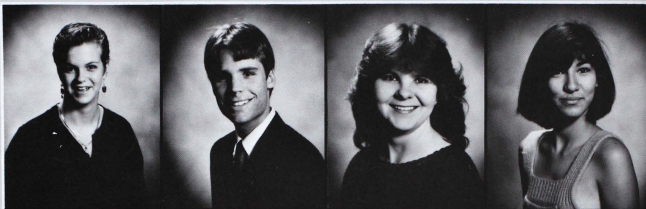


*Becky A. Johnson  
Andrew Jones  
Jeff Kloc  
Shawn Konescheck*

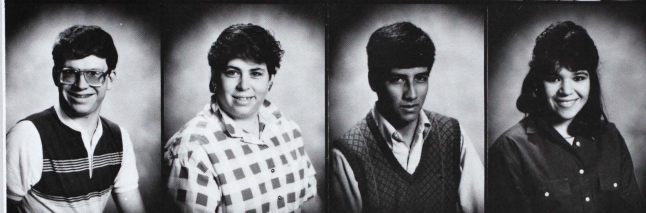


*Kelly Lynn Leopold  
Juan Lopez  
James Luhrman  
Myrna Martinez*

*Susan Mason  
Matthew J. McVearry  
Jacquelyn Mika  
Elvira Yolu Miller*



*Scott Allen Mills  
Mary Kay Misko  
David S. Morales  
Nancy Moreno*

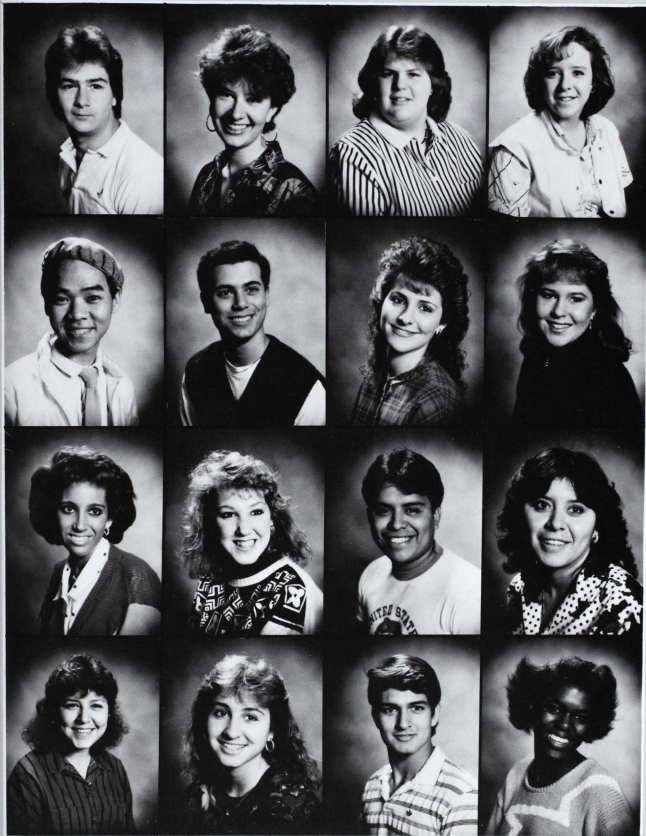


*Marcia Muehr  
John T. Nash III  
Alexiadis Nick  
Francisco Nieto Jr.*



*Christal Nolte  
Michael O'Brien  
John Ovorato  
Kelly Ozymy*





*Daniel J. Paciocco*  
*Rebecca Paul*  
*Parona Pease*  
*Amy A. Petrus*

*Khang Pham*  
*Joey Pistone*  
*Renee' Pontello*  
*Julie Poth*

*Diane Pucciarello*  
*Carolyn Rabalais*  
*Hector G. Ramos*  
*Imelda Ramos*

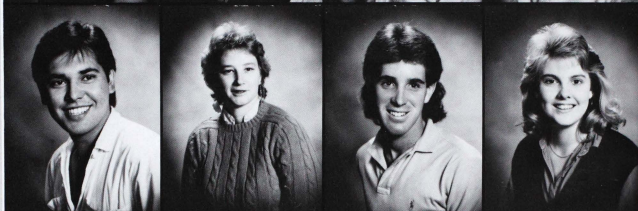
*Nora Reyes*  
*Clarrissa Rivera*  
*Steven Rivera*  
*Tamera Roberts*



Corina Robles  
 Andrea Rodricks  
 Geronimo Rodriguez Jr.  
 Maria Isabel Rodriguez



Roal Rodriguez  
 Lynn Russell  
 John Sebok  
 Andra Sheffield



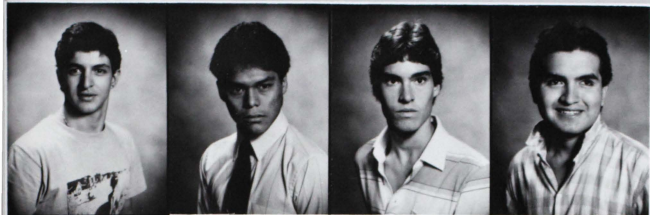
John Simmang  
 Carmen Spieth  
 Lauren Stout J.  
 J. Baxter Stringfellow



Paxman Tahlman  
 Cyndi Trevino  
 Homer Trevino  
 Cuillermo R. Torres







Alfonso Valverde  
Jose Luis Vasquez  
Adrain Brice Waller  
Rene L. Zabalza



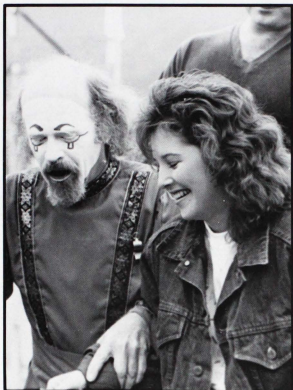
Armand Zambrano



Photo by T.J. MARSHALL



Photo by JEFF WILSON

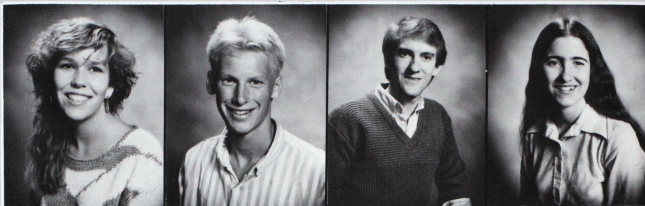


PHOTOS by JEFF WILSON



**SOPHOMORES**

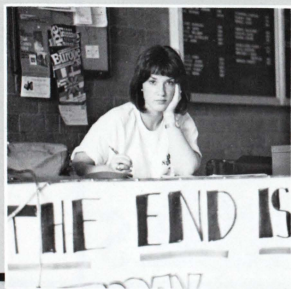
Juliana Balander  
Carl-Johan Belfrage  
Jason L. Blair  
Valerie Blythe



Jorge Borrego  
Yvette Brun  
Edith S. Cantu  
Juan Cintron III

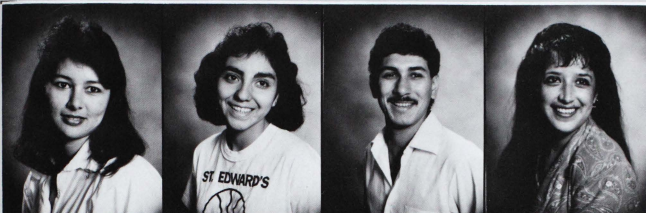


Michael Connell  
Karen Dunn  
Kimberly Ellis  
Tina Fitzpatrick

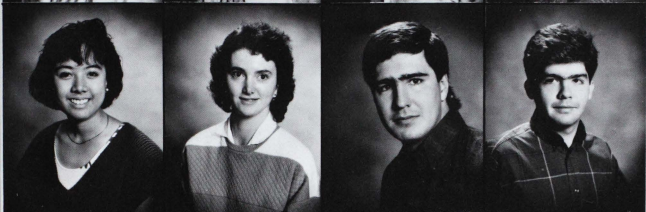


Photos by JEFF WILSON

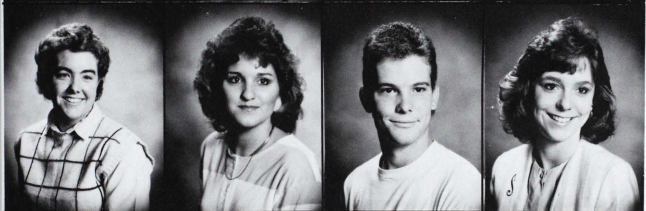




Lydia Flores  
Nora Flores  
Miro Hernandez  
Lupe Herrera



Marinelle Hervas  
Cathy Honey  
John Paul Hudson  
Howard G. Kainer



Katie Kelly  
Shelley Kempf  
John A. King  
Shannon Krumrey

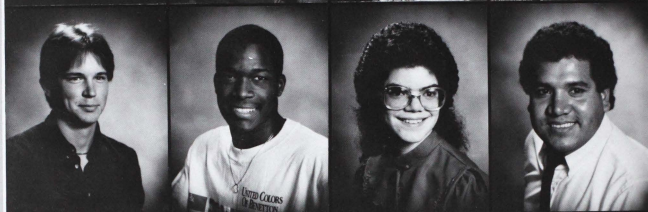


Lisa Kubis  
Christy Lane  
Esther Leanos  
Darlene Lee

Raquel Lopez  
Carmen Maverick  
Marian Michel  
Afshin Mohammadzadeh



John Nemecek  
Randy O'Reilly  
Cheryl Ottinger  
Leonardo Perez



Janet Richbourg  
Aleida Rodriguez  
Melissa Ann Rodriguez  
Kathleen Ryder



Judy Sanchez  
Sandra Lee Segura  
Clint Springer  
Theresa Steffek





Margarita Tagle  
Gerri Weishaupt  
Margaret Wilbeck  
Imedia Yopez



T.J. MARSHALL



Photos by JEFF WILSON





PHOTO by JEFF WILSON



**JUNIORS**

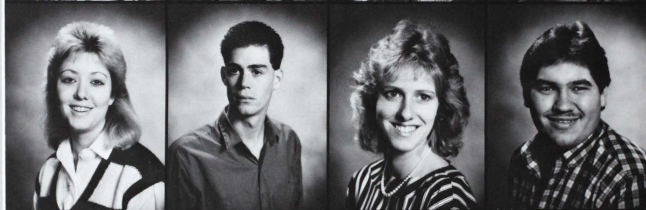
Mahmood Albulshi  
Tariq Alsindi  
Alma Rosa Aguirre  
Jennifer Batchelor



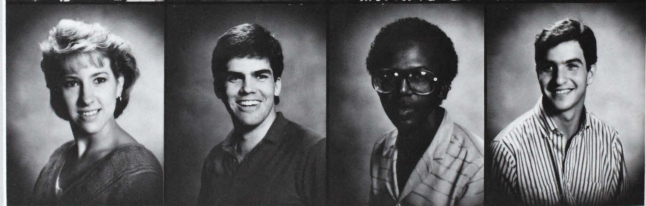
Gregg Beletsky  
Cara Carpenter  
Julie Chauvin  
Kim Coffey



Sharon Cox  
Robert Detweiler  
Janine Fansher  
Arturo Fernandez



Lori Fletcher  
Brian Flannery  
Clifton Gantt  
Jaime Garza

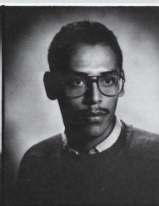




*Kirstin A. Griffin  
Lisa Gomez*



*Catherine Hellinger  
Diana Hernandez*

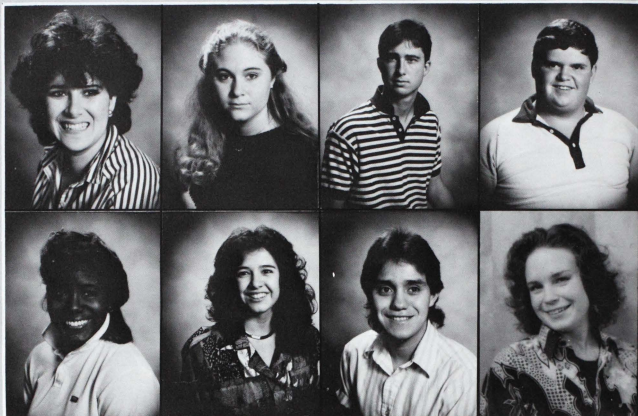


*Brenda Hutzler  
Devon Iles  
Gary Jessen  
Rolando Jimenez*



*Mary Clare Kemper  
Michelle Kinsella  
Mary Ann Licea  
Mary Lopez*

Audelia J. Mahchi  
Leah Martinets  
Chris McCauley  
Bobby McCormick

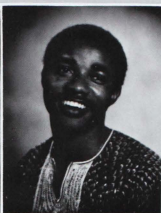


Tanouye McNorton  
Rita Moreno  
Cruz Morales Jr.  
Rebekah E. Morris



Photo by JEFF WILSON





Feliz Munoz  
Irene Nino  
Lisa Nolen  
Celestine O'Dinka

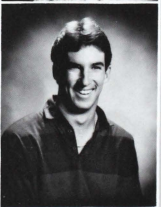
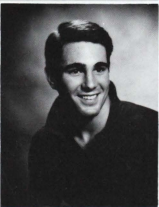
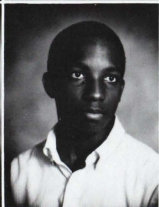


Eric Pickle  
Romella Reyes



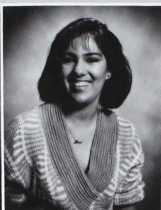
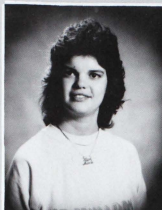
Guadalupe Rodriguez  
Mirella Rodriguez

Photo by JEFF WILSON

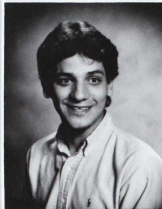


Maria Rosa  
Tony Ross  
John Roubal  
Walter Stewart

Liza Terrazas  
 Evangelina Trevino  
 Kelli Vallejo  
 Jeff Vance



Arnold Villareal  
 Peggy Wade  
 Karen Woolley  
 Sandra Word



Clemente Zabalza  
 Linda Zapata



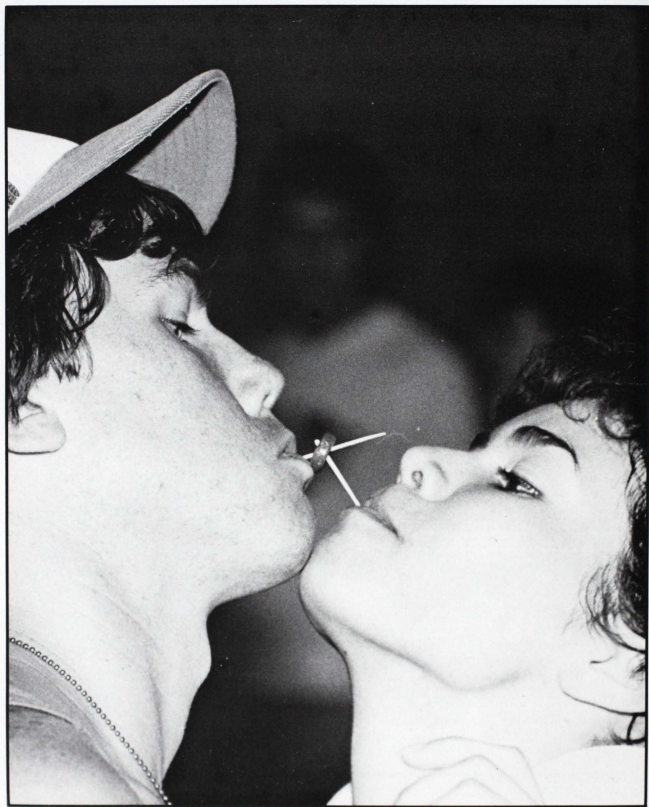
Photo by T.J. MARSHALL



Photo by JEFF WILSON



Photo by MICHELLE CAMPBELL



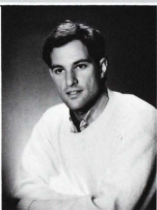
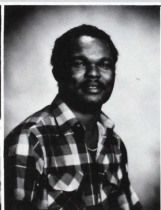


**SENIORS**



Photo by KIRSTIN A. GRIFFIN

Derick Alcala  
Albert Akano  
Robert Aziz  
David Baley

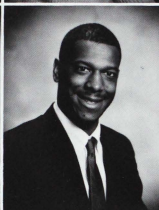


Leilani Balke  
Bernice Berry  
Kirk Bockover  
Dorothy Burwick

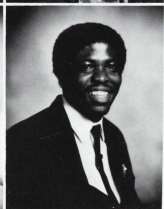




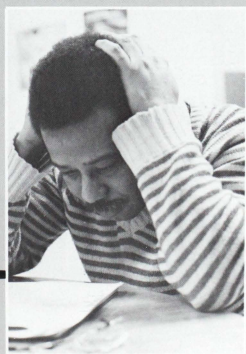
Jeanine Cadena  
Theresa Campbell  
Sheldon Chaffer II  
Trouble L. Clayton



Olga Cruz  
DeNell Davis  
Rosalinda DeAlva  
Michael DeCello



Alice DelaRosa  
Adonis Eke  
Nanim Evarist  
Michselle Fisher



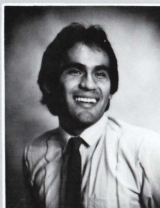
Photos by KIRSTIN A. GRIFFIN



Photos by JEFF WILSON



Jacob Fraire  
Odu C. Francis  
Elizabeth Garcia  
Tony Gardner



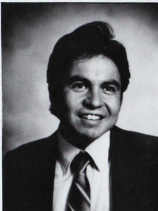
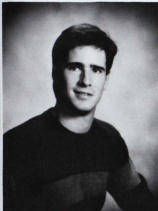
James M. Gonzalez  
Robert Gonzalez  
Gid Graves  
Adriana Guerra







Maria Guerra  
Miriam Gutierrez  
Susan Heredia



Thomas Hudson  
Salomon Torres-Hurtado  
Adebayo Isola

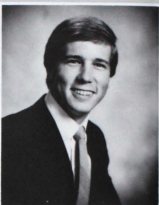
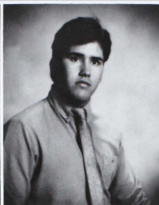


Charlie Keffeler  
Deborah Kenyon  
Janet Kloc  
Chris Lemchi

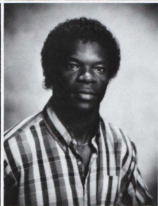


Stephanie Lieck  
Gloria Lira  
Terri Marshall  
Maria Mendez

Kyle Munchrath  
Victor Mura  
Sylvie Nelson  
Brian Nemec



Shelly Nichols  
Chris Okeasu  
Patrick Onyenaka  
Kelly O'Reilly



Gabriela Ortega  
Dawn Owens  
Patrick Paratore  
Susan Petersen



Jeannine Pires  
Katherine Price  
Al Puente  
Judy Rice





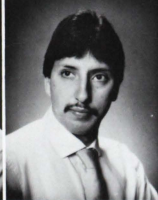
Bruce Rippee  
Patricia Robles  
Eileen Ryan-Rojas  
Xenia Saavedra



Tom Saltzstein  
Heidi Schwarzenbart  
Mary Shields  
Carlos Torres



Roberto  
Vasquez  
Teresa Webb



Adrienne  
Widemon  
Joel Ysla

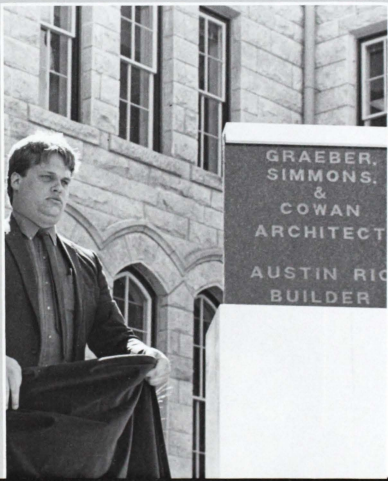
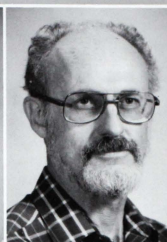


Photo by JEFF WILSON



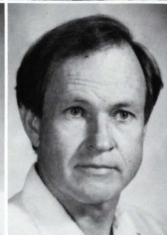
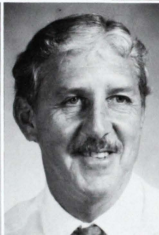
Henry Altmiller  
Andrew Angermeier, C.S.C.  
Thomas Bjelland  
Anna Bolling



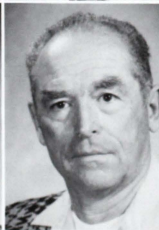
Michelle Campbell  
Brenda Carter  
Barbara Cassidy  
Betty Cliff



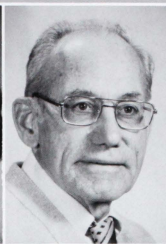
Doris Constantine  
Louis Coe, C.S.C.  
Walle Conoly  
Cornelius Corcoran, C.S.C.



Anne Crane  
John Dailey  
George Dawkins  
Stan Irvin







Dave Dickson  
Daisy Dirk-Hazen  
William Dunn, C.S.C.  
Bob Fritsch

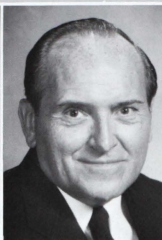


Rosie Gonzales  
Jo Hayes  
Glenn Hinkle  
Marianne Hopper

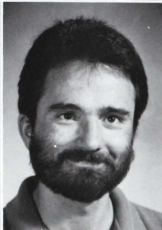


Photo by JEFF WILSON

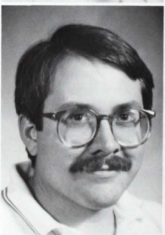
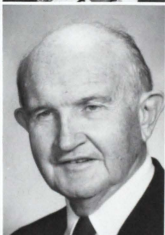
Richard Hughes  
Eagan Hunter, C.S.C.  
Richard Kinsey  
Marcia Kinsey



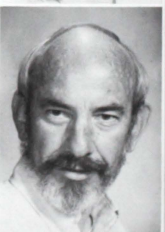
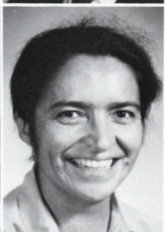
James Koch  
Bill Kennedy  
Cecil Lawson  
J. D. Lewis



Emma Lou Linn  
John Lucas  
Daniel Lynch, C.S.C.  
Scott McAfee

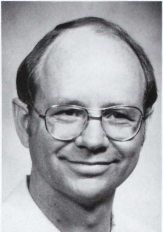
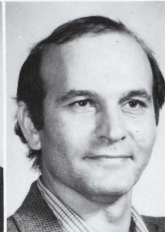


Melba Martinez-Mishler  
Cherry Mauk  
Minerva Miles  
Jimmy Mills





Gerald Muller, C.S.C.  
Terry Newton  
Patricia O'Connor  
Joseph O'Neal



Philip Odette, C.S.C.  
Richard Orton  
Hadi Oveisi  
William Penn



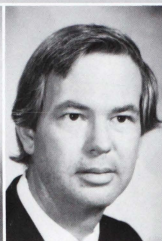
John Perron, C.S.C.  
Connie Pulley  
Janice Randle  
Eileen Shocket



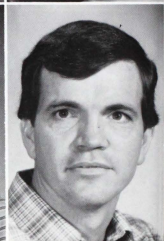
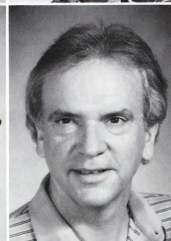
Bernard Simon  
Letha Sparks  
Joe Sprug  
Catherine Thompson



*Simon Scribner, C.S.C.  
John Trout  
Marie Andre Walsh, L.H.M.  
Cathy Weber*



*Madeleine Weber, L.H.M.  
David Williams  
Neal Wise, O.P.  
William Zanardi*

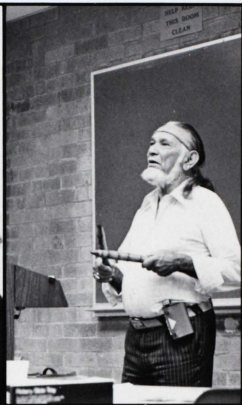
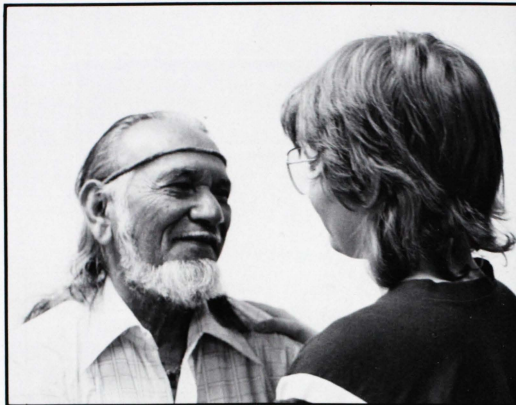


*Photo by DAMIAN MORGAN*





Photo by MICHELLE CAMPBELL



Photos by KIRSTIN A. GRIFFIN

## A SPECIAL LESSON

### Walaga Lake Dream

An old Aboriginal wise man appeared and said: "White man came to this land and pushed my people out of their sacred land, making them live in one place and in houses, cutting them off from their Spirit which is so bound up with the land. They took my people's Spirit and gave them a bottle of cheap plonk in its place. The white people of today see the results of this—a people floundering without direction, and class them at worst, as drunken no-hopers, or, at best, as our poor brown cousins, and offer them charity.

Now is the time of the Renewal of the Dreaming, now is the time to redress the balance, for my people's sake, and this country's sake. Australia can be a shining Spiritual example to the rest of the world over the next decade.

Australia is the last land on earth that has the Dreaming and hasn't had wars fought on its soil. Starting with the Yui tribal territory, we are charged with renewing the Dreaming in Australia, mountain by mountain. The Yui will rise from a detribalised, scattered people to find anew their dreaming, and their place as a tribe in this world that seems on the surface to hold no place for them.

It has started to work changes here with some of the children and some for the adults wearing the red band. It is a powerful force for the people to get their spirituality back again and drop the drink. When the renewing is complete here, its strength will awaken other tribes in other areas to take their heritage and renew the dreaming in their traditional areas".

He then looked at me fiercely and asked why I wear the red band. "I wear it out of respect for the land and the spirits thereof, and the aboriginal people. It says to your people, it is time you stopped being what the white man has made you, and took up your heritage as custodians of this land with pride and dignity, and I will support you in any way I'm able to restore this land and all its people, regardless of color or creed, to balance, so that by example, Peace and Harmony can once again flow out of this land to the rest of the world as it did once so long ago.

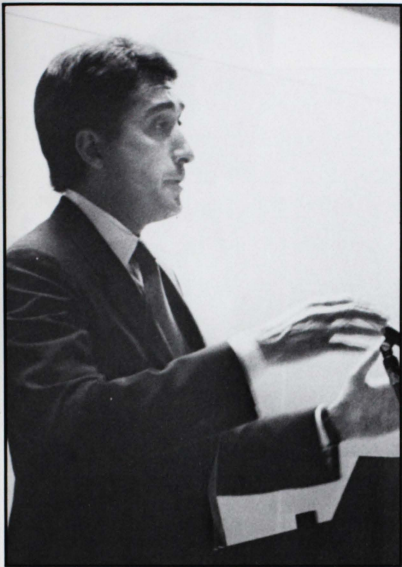
By: Guboo Ted Thomas 2/5/82

Guboo, which means "good Friend", is a seventy seven year old leader of the Yui tribe from New South Wales. He has spent the last three years traveling the world spreading his message of spiritualism and appreciation of nature.

When visiting us at St. Edward's, Guboo showed us slides of his beautiful land on Walaga Lake, which included many of the sacred sites his people meditate at. These sites are believe to have been created especially for them by Darama, the great spirit, God.

His message is a simple one; teach people the appreciation and respect of nature by using the Aboriginal medium of "Dreamtime" (as mystical state in which the Aborigines experience themselves at one with nature).

Guboo is involved with preserving the land rights and protecting the sacred sites that the Aborigines depend on for spiritual worship and strength. However, the government wants the land for development and mining. Guboo said that through 'Dreamtime' people can realize the true meaning of the land and the importance of its preservation.

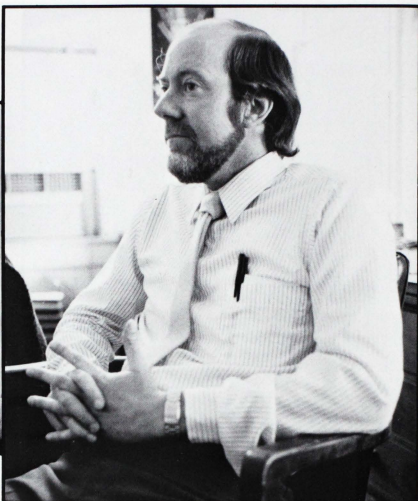
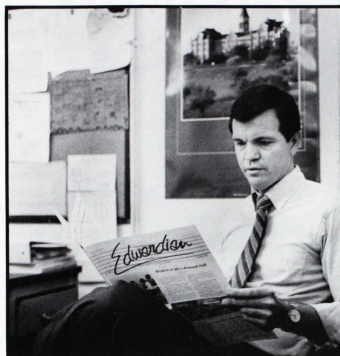


## MAYOR CISNEROS PAYS ST. ED'S A VISIT

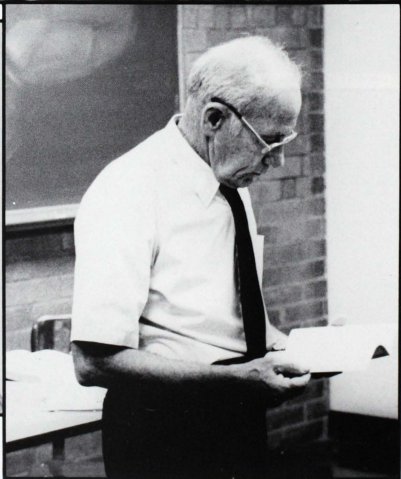
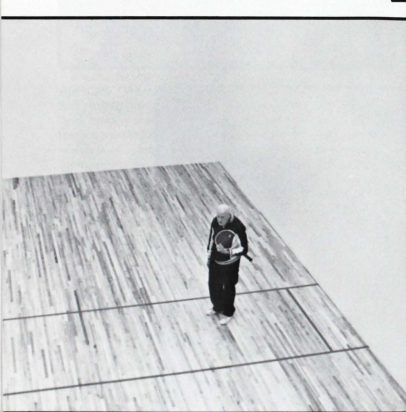
Mayor Cisneros from San Antonio spoke at St. Edward's during the Spring semester. Citywide press interviewed Cisneros in the newly dedicated Recreation and Convocation Center. The Mayor reflected on budgets, ethics and his own college experience as he spoke on the future of higher education.



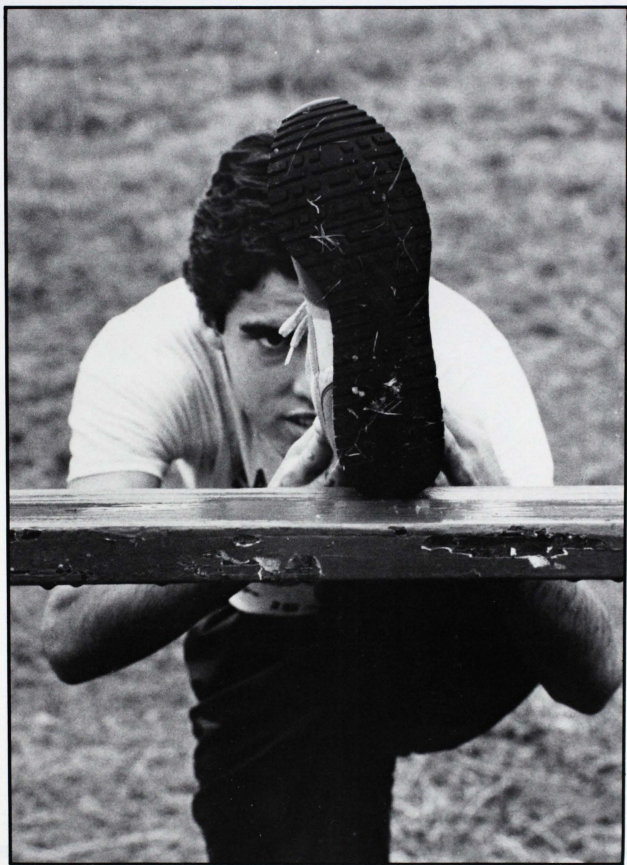


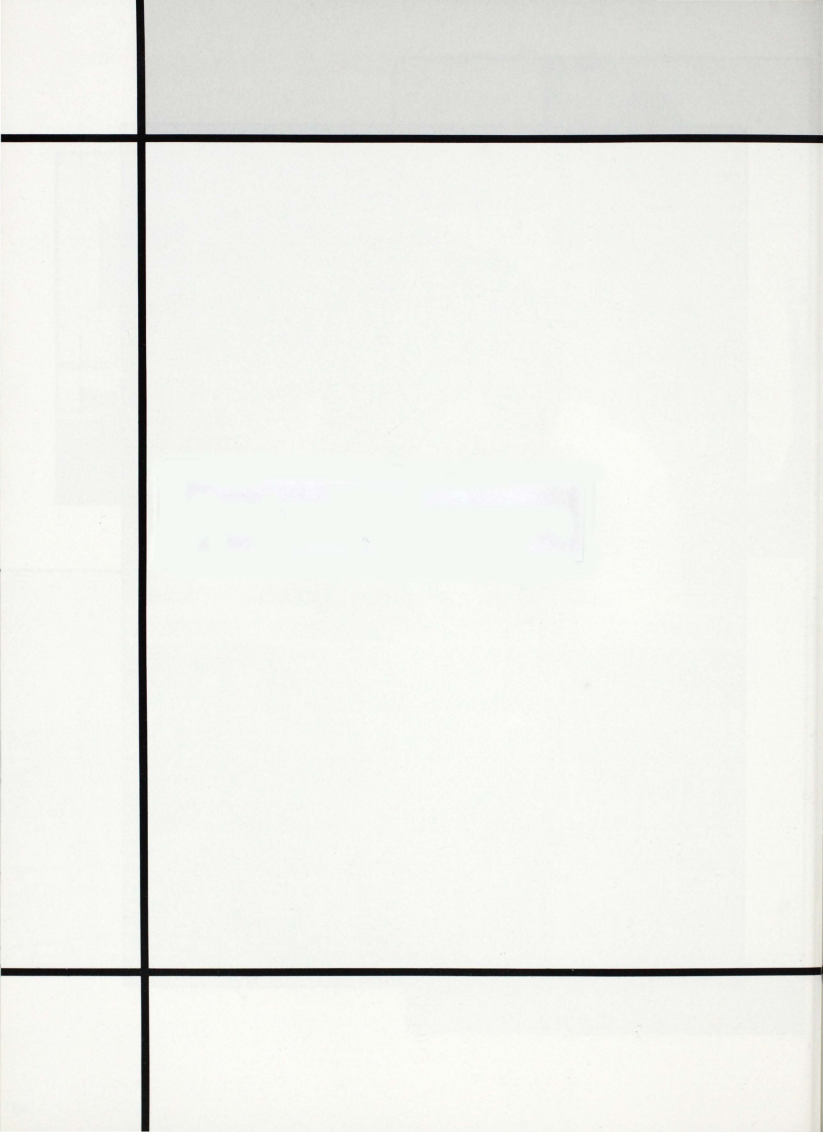


*Photos by T.J. MARSHALL*









**CLOSING**

# THE END TODAY is

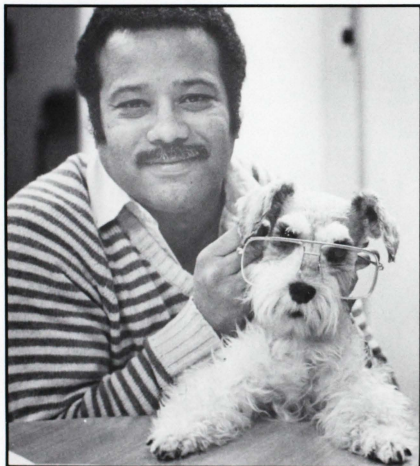


Photo by KIRSTIN A. GRIFFIN



Photo by DAMIAN MORGAN

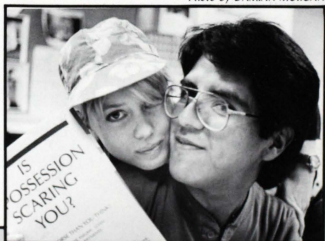


Photo by JEFF WILSON



Photo by DAMIAN MORGAN



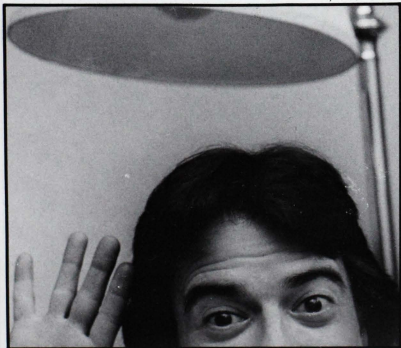




Photo by T.J. MARSHALL



Photos by DAMIAN MORGAN



These open doors are like family to me.  
The first strange faces — no longer so  
strange.

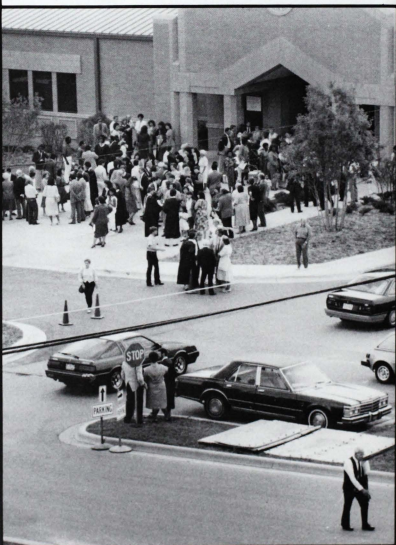
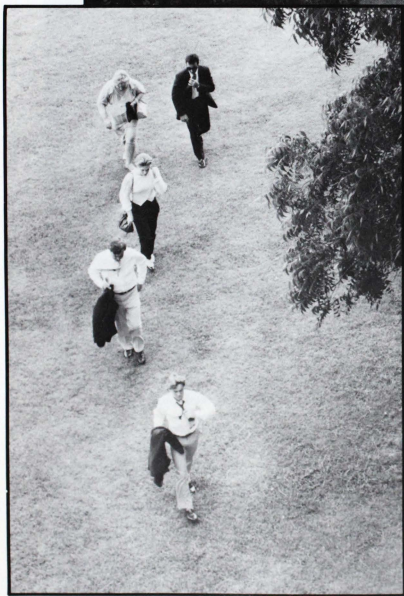
Living together, learning together,  
laughing together.

When we part and go our separate  
ways,

I'll remember you and smile.  
Our days together were beautiful ...  
But now we are free, and parting.  
It's our turn to open our own new  
doors.

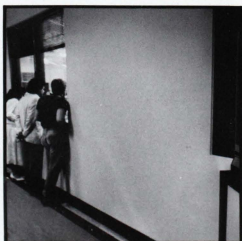
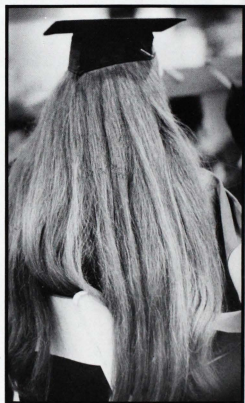
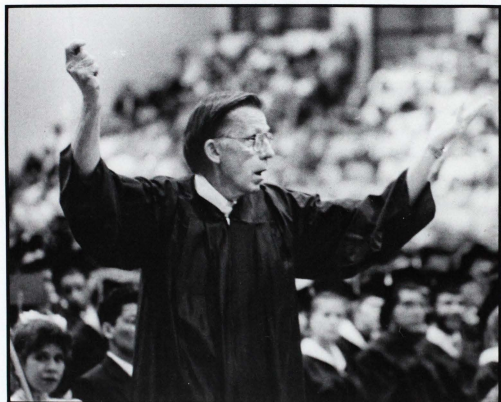
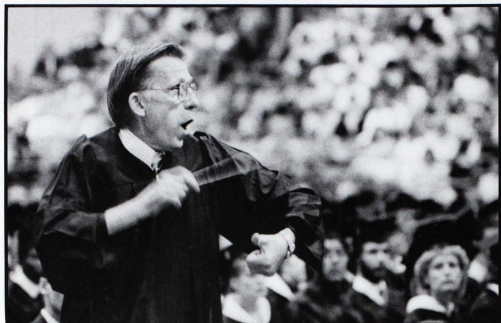
Doors to our future. Doors to our life.

K.A. GRIFFIN

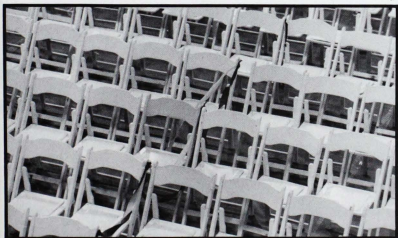
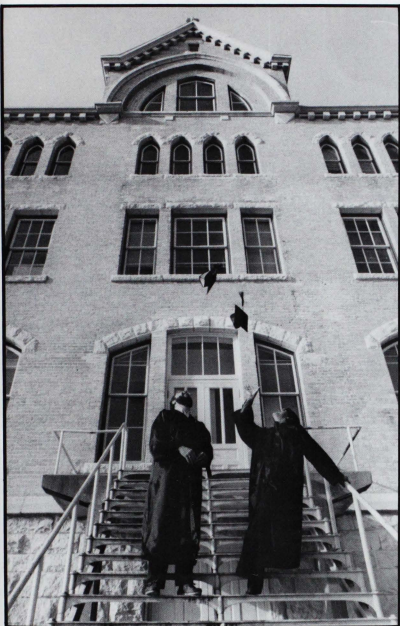


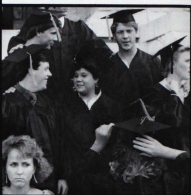
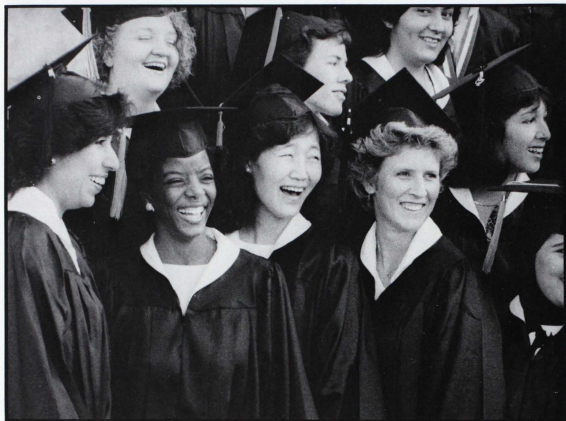












Photos by  
DAMIAN  
MORGAN



1987  
ST. EDWARD'S



ST. EDWARD'S  
CLASS



Photo by  
DAMIAN  
MORGAN

The doors have been opened.

Just for you.

Walk through.

Explore.

Learn.

Live.

Kirstin A. Griffin







